



**Rigenerazione Ricettiva
Sostenibile,**
il progetto di un Motel su
preesistenze contemporanee con
sistemi costruttivi in legno ad alta
efficienza energetica

Docenti titolari:

Corso A: prof. Pietromaria Davoli

Corso B: prof. Theo Zaffagnini

Corso C: prof. Valentina Modugno

Laboratorio di Costruzione dell'Architettura 1

A.A. 2019/2020



Università
degli Studi
di Ferrara

DA

Dipartimento
Architettura
Ferrara

Funzione
Ricettività diffusa
Rapporto con il contesto

STRAY BIRD hotel

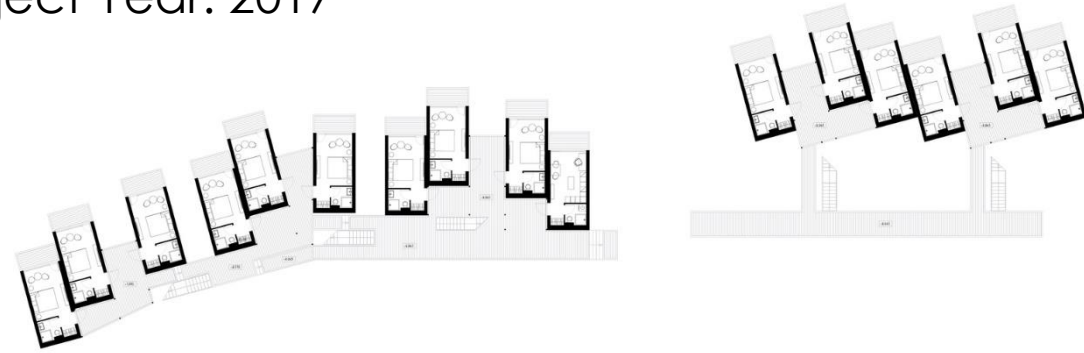
Architects: Rhizome

Location: 188760, ul. Zaozernaya, Priozersk, Leningrad

Oblast, Russia

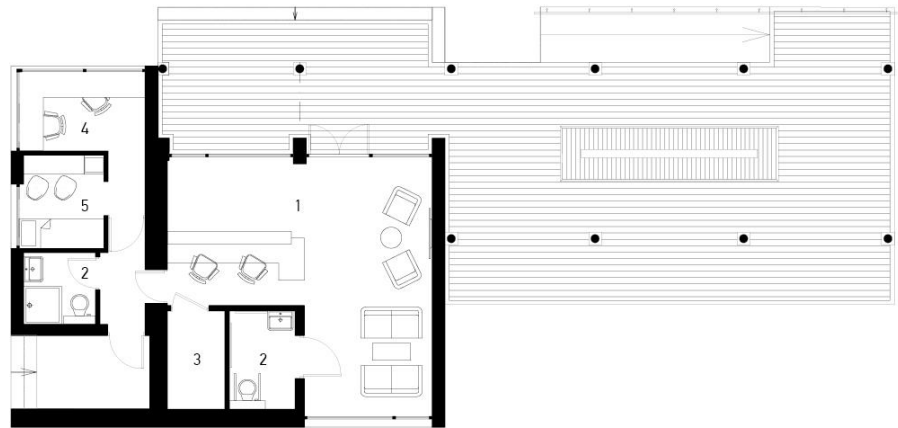
Area: 1330.0 m²

Project Year: 2017



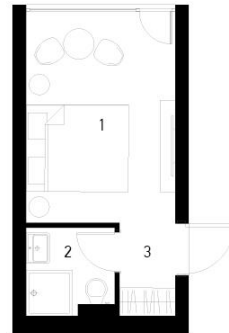
GROUND FLOOR PLAN





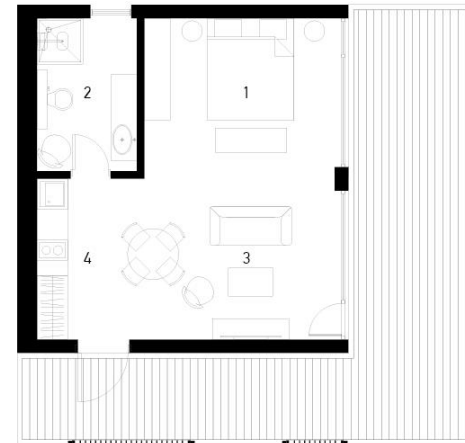
RECEPTION_FLOOR PLAN

- 1 RECEPTION
- 2 WC
- 3 SERVICE
- 4 SECURITY OFFICE
- 5 STAFF BEDROOM



STANDART ROOM_FLOOR PLAN

- 1 BEDROOM
- 2 BATHROOM
- 3 HALL



LUX_FLOOR PLAN

- 1 BEDROOM
- 2 BATHROOM
- 3 LIVING ZONE
- 4 KITCHEN



Sara Gambino

Anno 2016

Struttura Prevalente Legno

Committente Eco Bio Agriturismo La Bella Vite

Impresa di costruzioni Palumbo legnami

Status Opere realizzate

Tipologia Alberghi / Unità abitative modulari



Manshausen 2.0 Island Resort

Architects: Stinessen Arkitektur

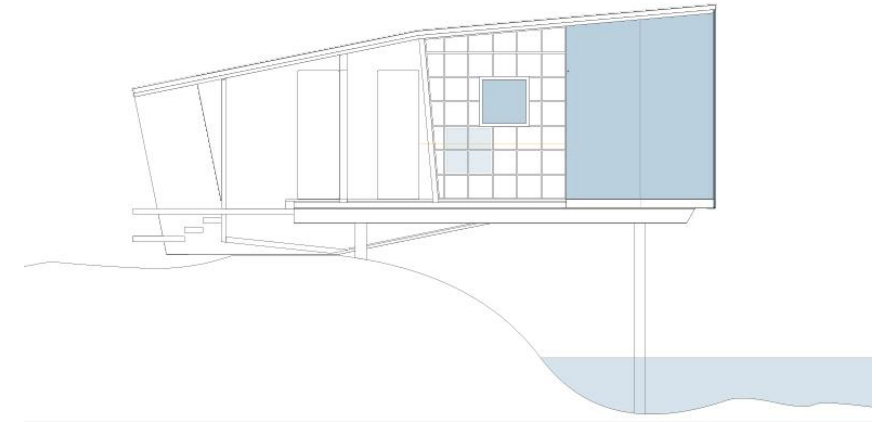
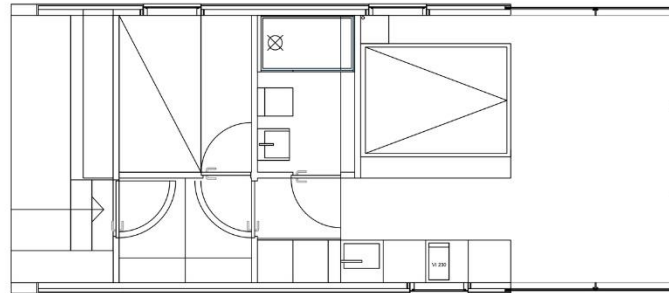
Location: Mannshausen, Lille

Manshausen, 8283, Norway

Category: Extension

Area: 130.0 m²

Project Year: 2018

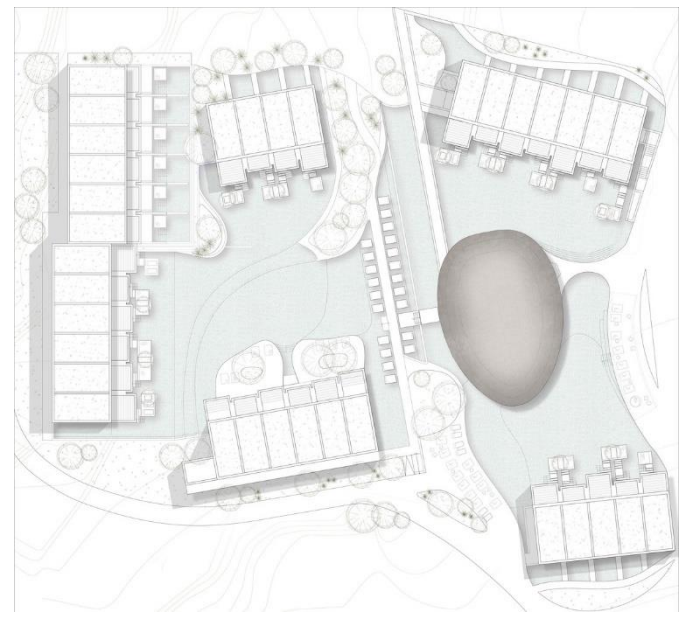


OLEA ALL SUITE HOTEL

Architects: BLOCK722 architects+

Location: Zakynthos, Greece

Project Year: 2018



STRAY BIRD hotel

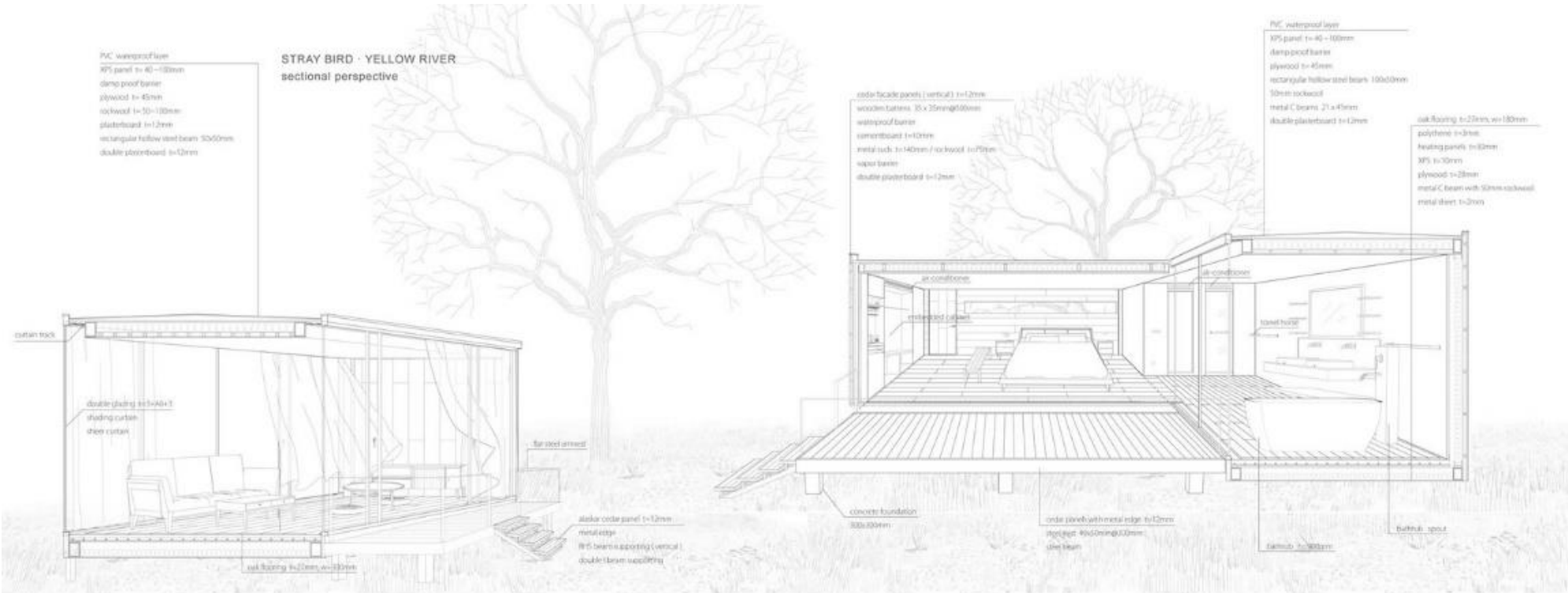
Architects: STUDIO QI

Location: Yellow River, Zhongwei, Ningxia, China

Area: 400.0 m²

Project Year: 2019





Westpoint Dakhla Ecolodge

WaterNest Village

Ecological Floating Resort

Londra / Regno Unito / 2016

progettato dall'architetto italiano

Giancarlo Zema

Committente EcoFloLife

Status Opere realizzate



**Forma e aggregazione
in rapporto a scavo e oggetto**

Riverside Park Pavilion

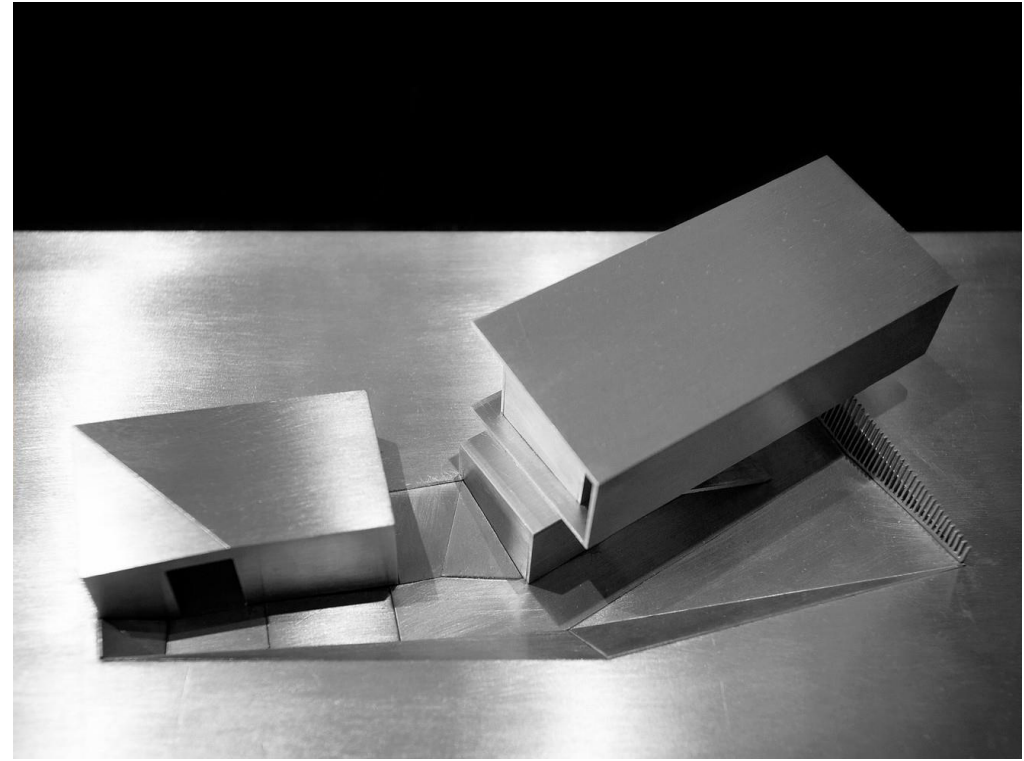
Architects: Vector Architects

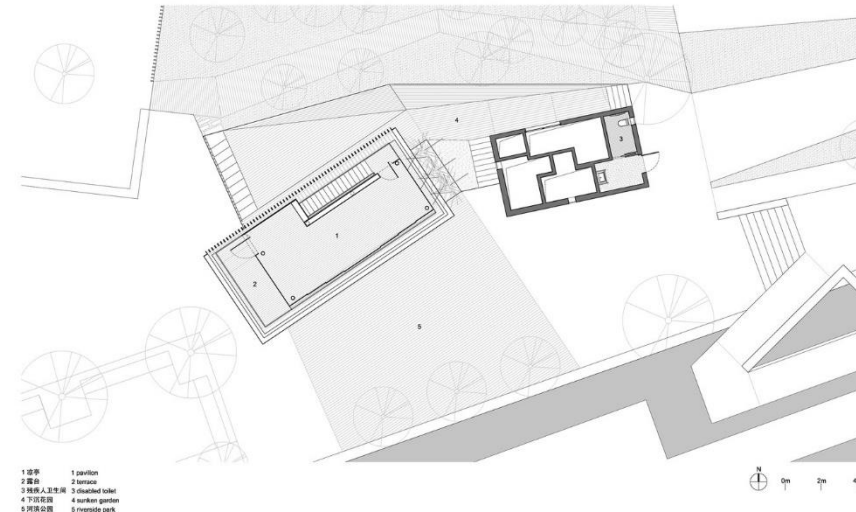
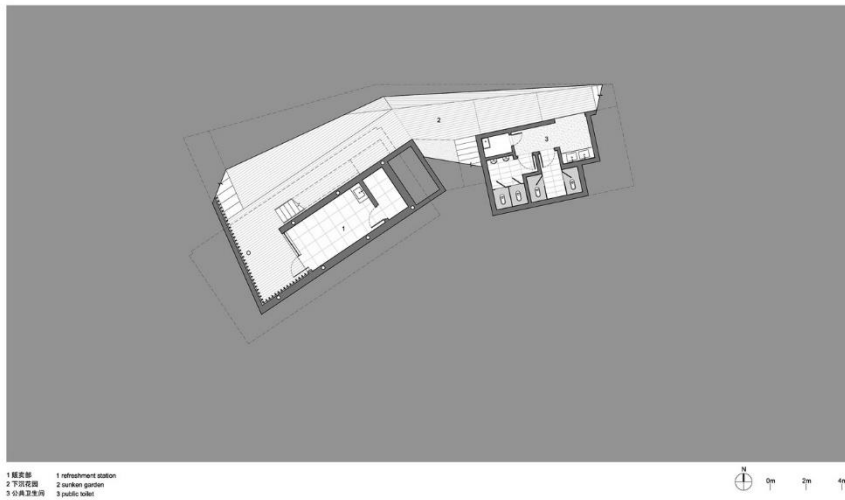
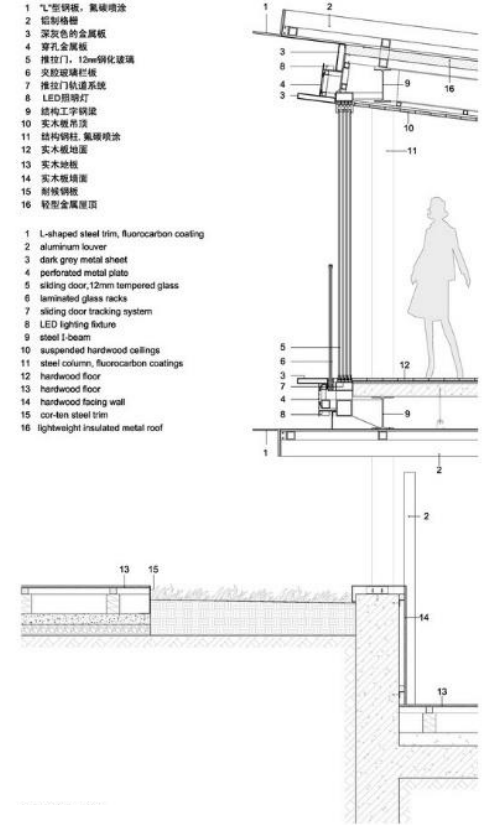
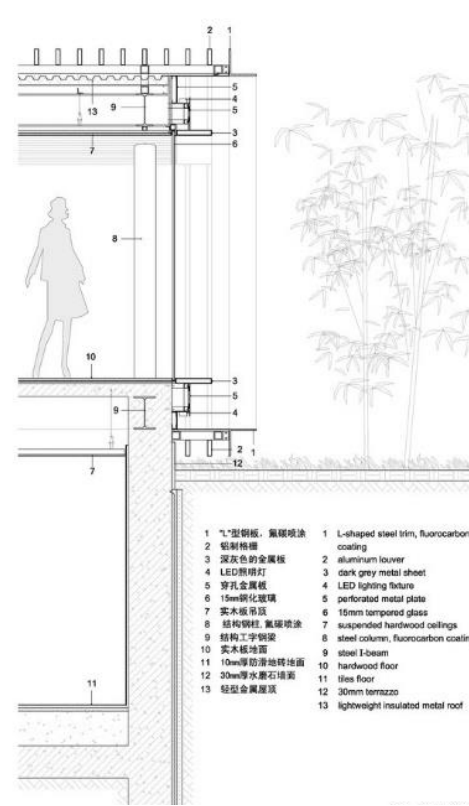
Location: Kunshan, China

Project Architect: Feng Xu

Area: 175.0 m²

Project Year: 2013





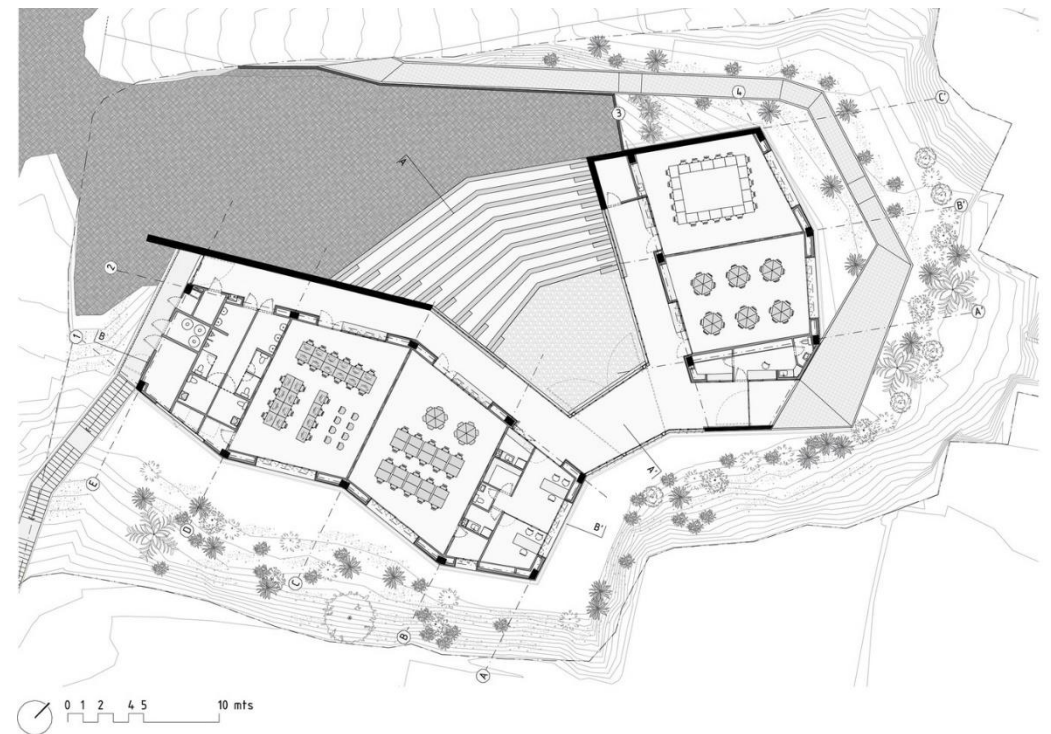
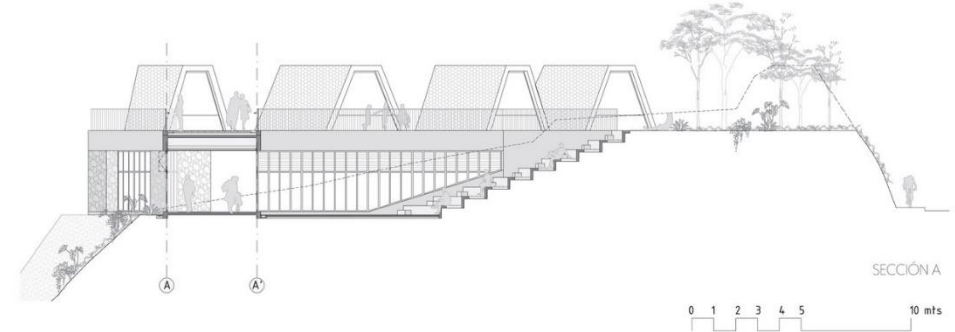
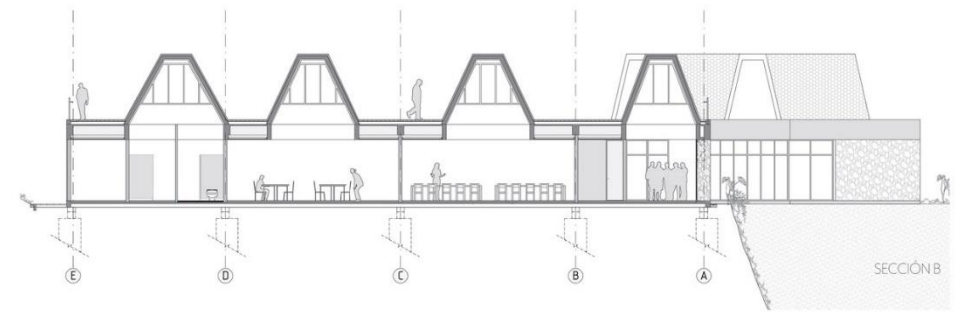
San Vicente Ferrer Community Center

Architects: Plan:b arquitectos

Location: Rionegro-San Vicente Ferrer,
San Vicente, Antioquia, Colombia

Area: 1000.0 sqm

Project Year: 2015





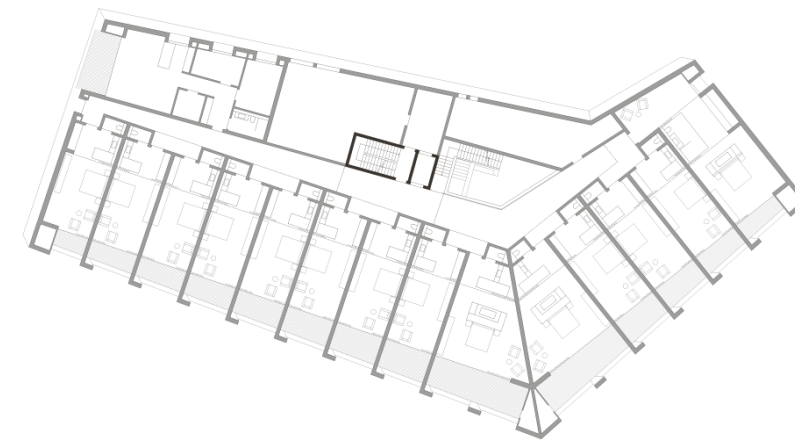
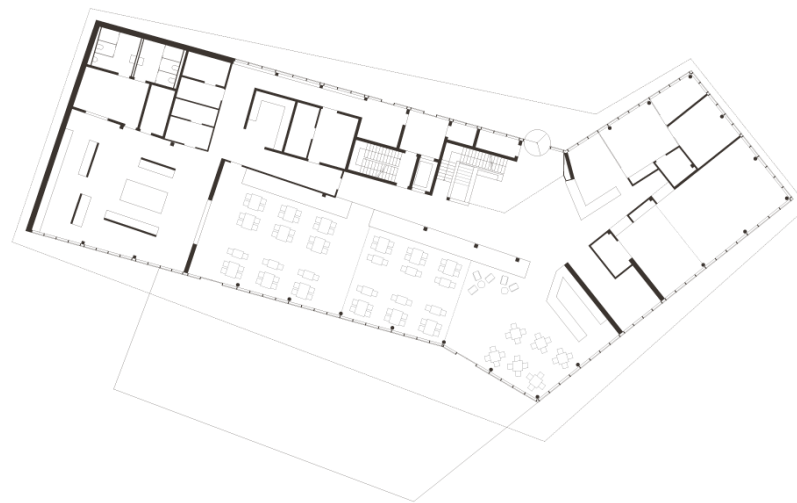
Neubau Golfhaus

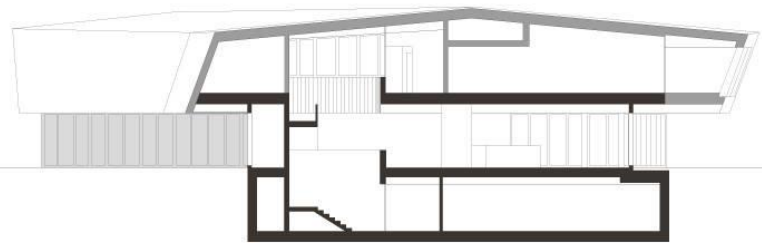
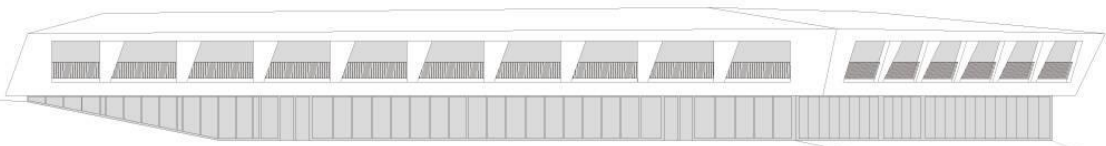
Meggen, Switzerland

Architects: GKS Architekten

Generalplaner AG

Year: 2017





Attrezzature esterne e volumetrie

ZITOMORI PARCO

ZITOMORI ARCHITECTS

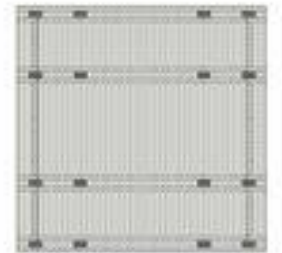
Anno 2015

Committente Comune di Controne (Salerno)

Impresa di costruzioni G.R. Costruzioni srl di Palomonte (SA) - Per le strutture il legno lamellare: Rubner Holzbau Sud

Status Opere realizzate

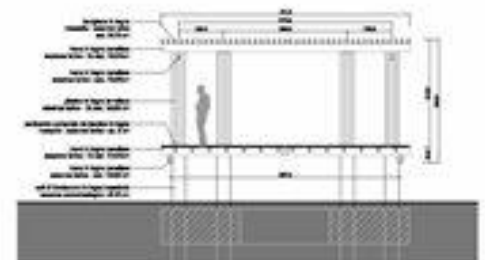
Tipologia Parchi, Verde Pubblico / Parchi a tema, zoo / Strutture turistiche / Bar, Cafè / Strutture per il tempo libero / Riqualficazione costiera, corsi d'acqua



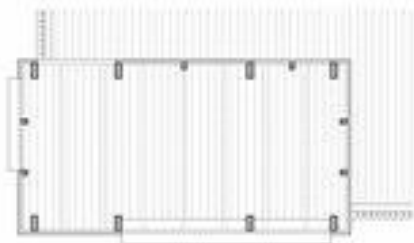
Planimetria Gazebò



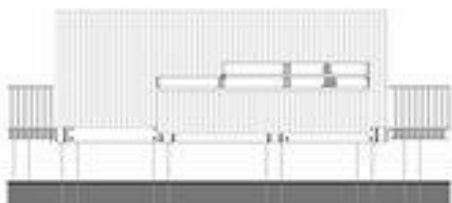
Prospetto verso il fiume



Sezione



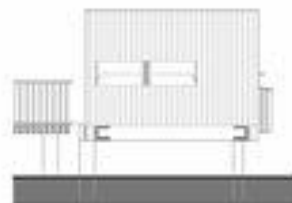
Planimetria Birdwatching



Prospetto verso il fiume



Prospetto est

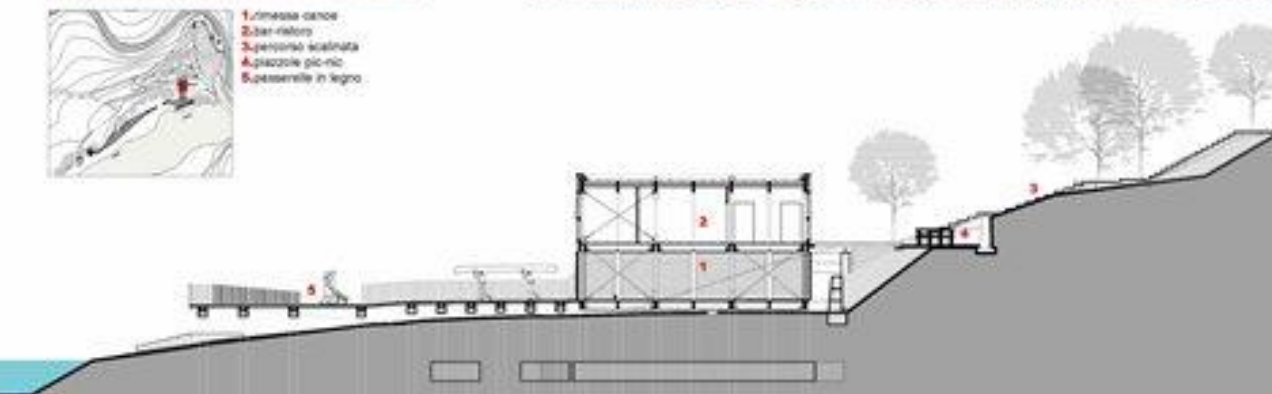


Prospetto ovest





- 1. Rimessa canoe
- 2. bar-ristoro
- 3. percorso scialpinista
- 4. piazzole pic-nic
- 5. passerella in legno



LEGENDA

- 1. ingresso
- 2. Servizi pubblico
- 3. Servizi personale
- 4. Bancone bar
- 5. Tavoli ristoro
- 6. Ufficio

