

$$V(z) = \frac{13 ql z^3}{96 EI} - \frac{5 ql^2 z^2}{32 EI} + \frac{ql^4}{48 EI}$$

$$f(z) = -\frac{13 ql z^2}{32 EI} + \frac{5 ql^2 z}{16 EI}$$

$$f'(z) = -\frac{13}{16} ql z + \frac{5}{16} ql^2$$

$$T(z) = -\frac{13}{16} ql$$

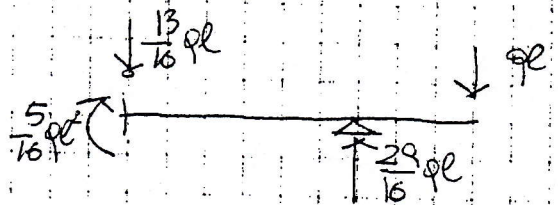


DIAGRAMMA DEL TAGLIO

T

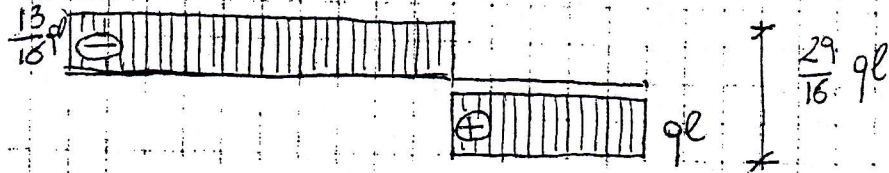
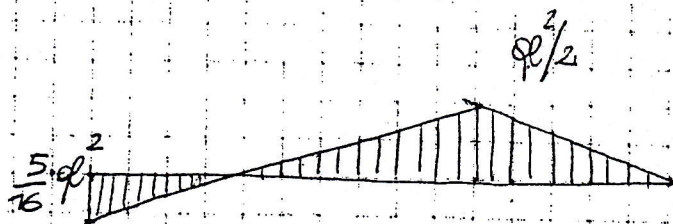


DIAGRAMMA DEL MOMENTO

M



DEFORMATA

