



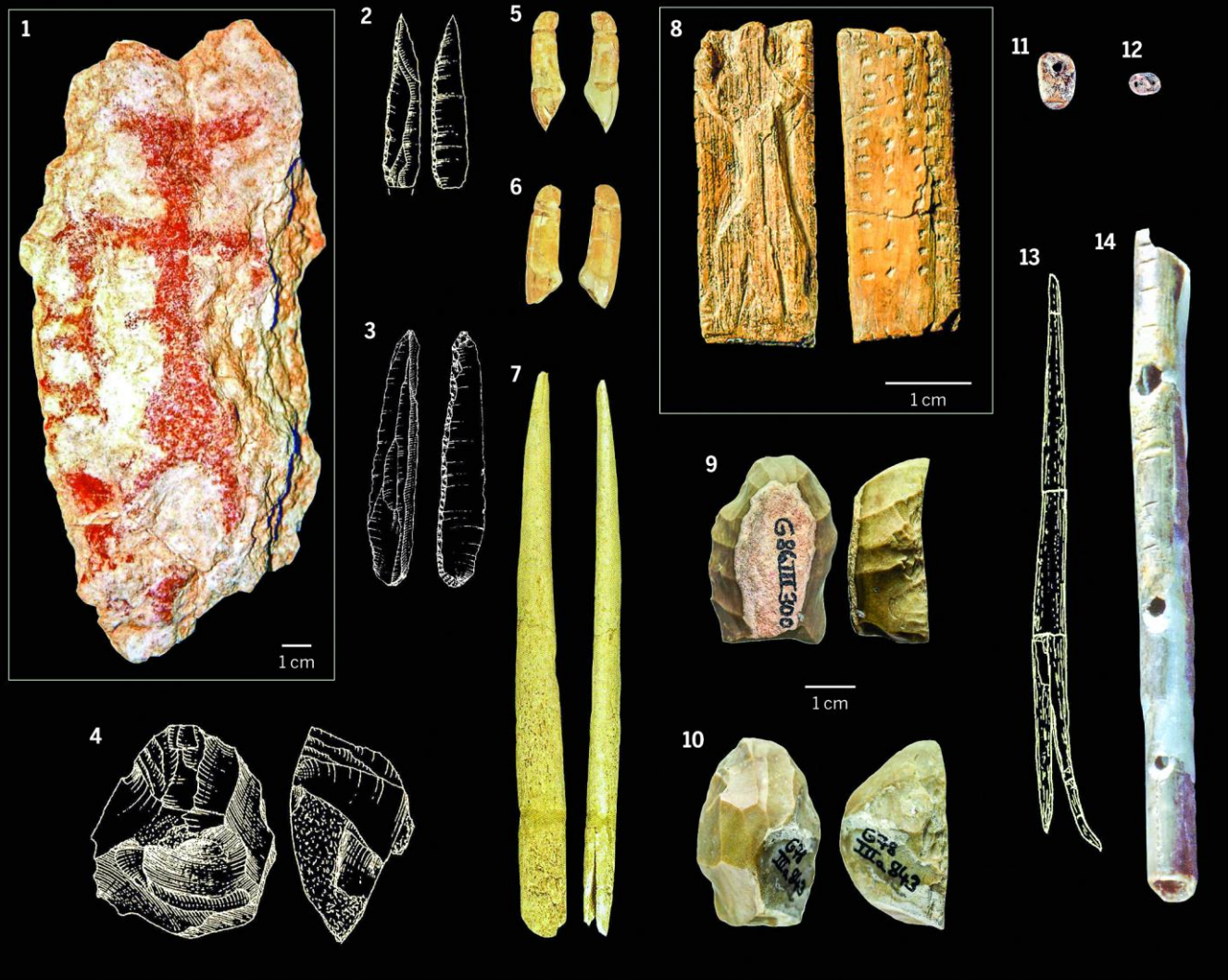
Università  
degli Studi  
di Ferrara

**Marco Peresani**

## **Cronologie e culture del Paleolitico Lezione 15 – the Aurignacian**



La migration Dessin de Benoit Clarys



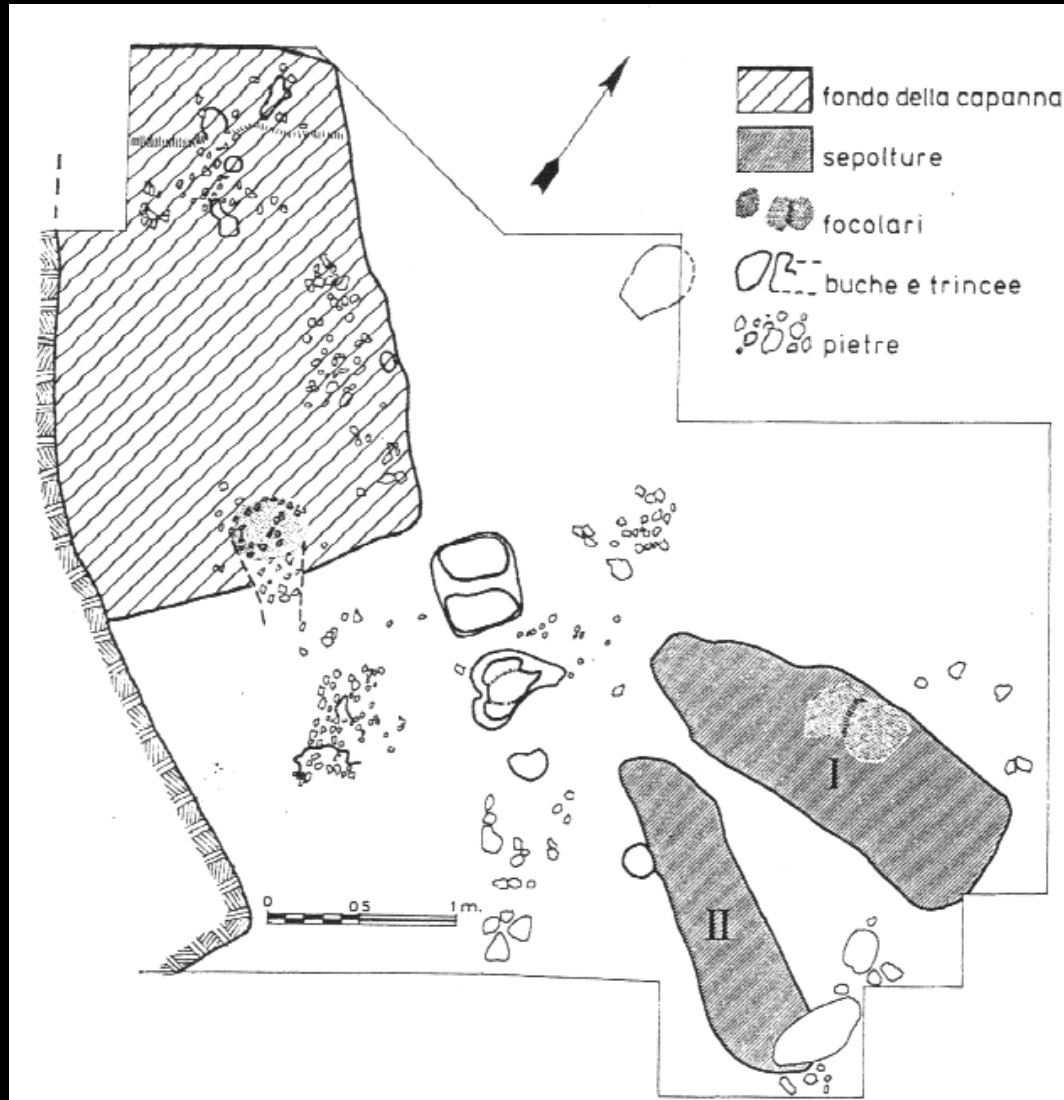
Protoaurignacian finds from Grotta di Fumane (1 to 7) compared to early Aurignacian finds from Geißenklösterle (8-14). (1) Therianthrope painting on limestone block; (2, 3) points with abrupt retouch; (4, 9, 10) carinated scrapers; (5, 6) grooved cervid teeth; (7, 13) split-based bone points; (8) therianthrope relief carved from ivory; (11, 12) personal ornaments made from ivory; (14) bone flute made from a swan radius.

# **The makers of the Aurignacian**



# Presumed burials at Cueva Morin, Spain

No bones, due to post-depositional alteration



# Aurignacian human remains in Europe?

YEARBOOK OF PHYSICAL ANTHROPOLOGY 43:61-115 (2000)

## Makers of the Early Aurignacian of Europe

STEVEN E. CHURCHILL<sup>1</sup>\* AND FRED H. SMITH<sup>2</sup>

<sup>1</sup>Department of Biological Anthropology and Anatomy, Duke University,

Durham, North Carolina 27708

<sup>2</sup>Department of Anthropology, Northern Illinois University, DeKalb, Illinois 60115

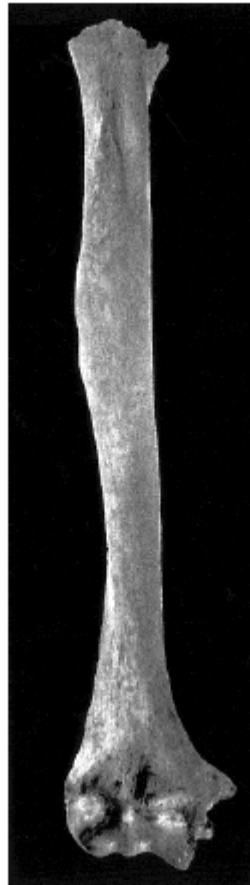


Fig. 8. Vogelherd 3 right humerus, anterior view.

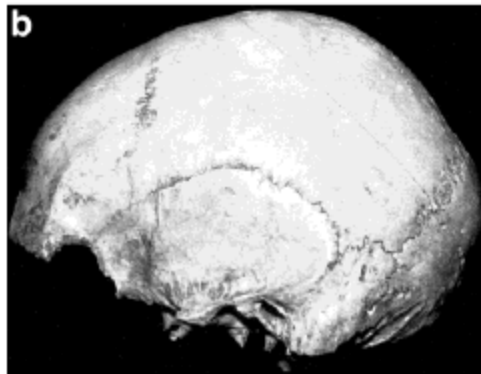
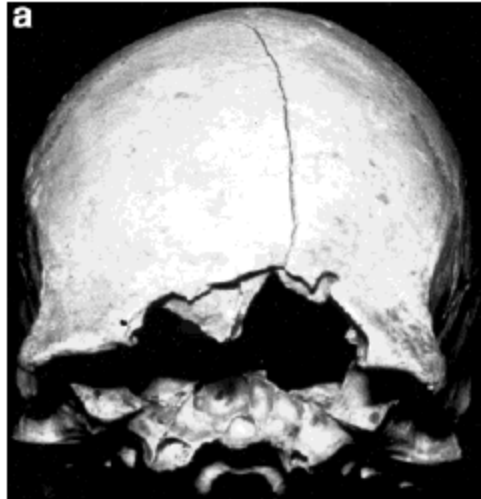


Fig. 5. Vogelherd 1 cranium. a: Anterior. b: Lateral.

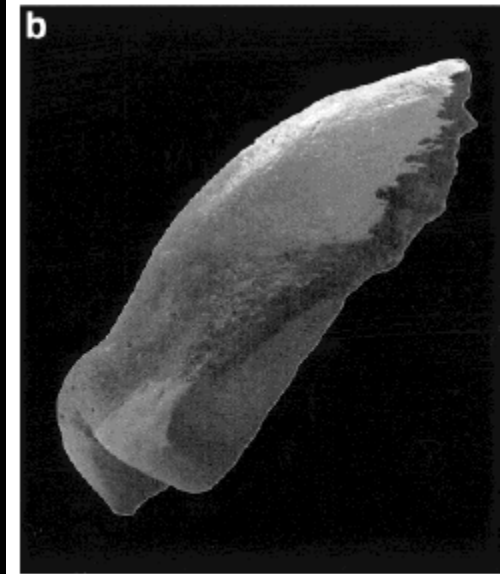
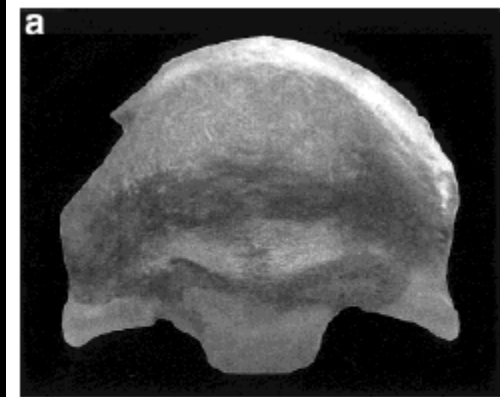


Fig. 4. Hahnöfersand frontal. a: Anterior. b: lateral.

# Neolithic (ex Aurignacian) human remains

NATURE | VOL 430 | 8 JULY 2004 | www.nature.com/nature

## letters to nature

### Unexpectedly recent dates for human remains from Vogelherd

Nicholas J. Conard<sup>1</sup>, Pieter M. Grootes<sup>2</sup> & Fred H. Smith<sup>3</sup>

<sup>1</sup>Abteilung für Ältere Urgeschichte und Quartärökologie Institut für Ur- und Frühgeschichte und Archäologie des Mittelalters Universität Tübingen, Schloss Hohentübingen, 72070 Tübingen, Germany

<sup>2</sup>Leibniz Labor für Altersbestimmung und Isotopenforschung Universität Kiel, Max-Eyth-Strasse 11-13 24118 Kiel, Germany

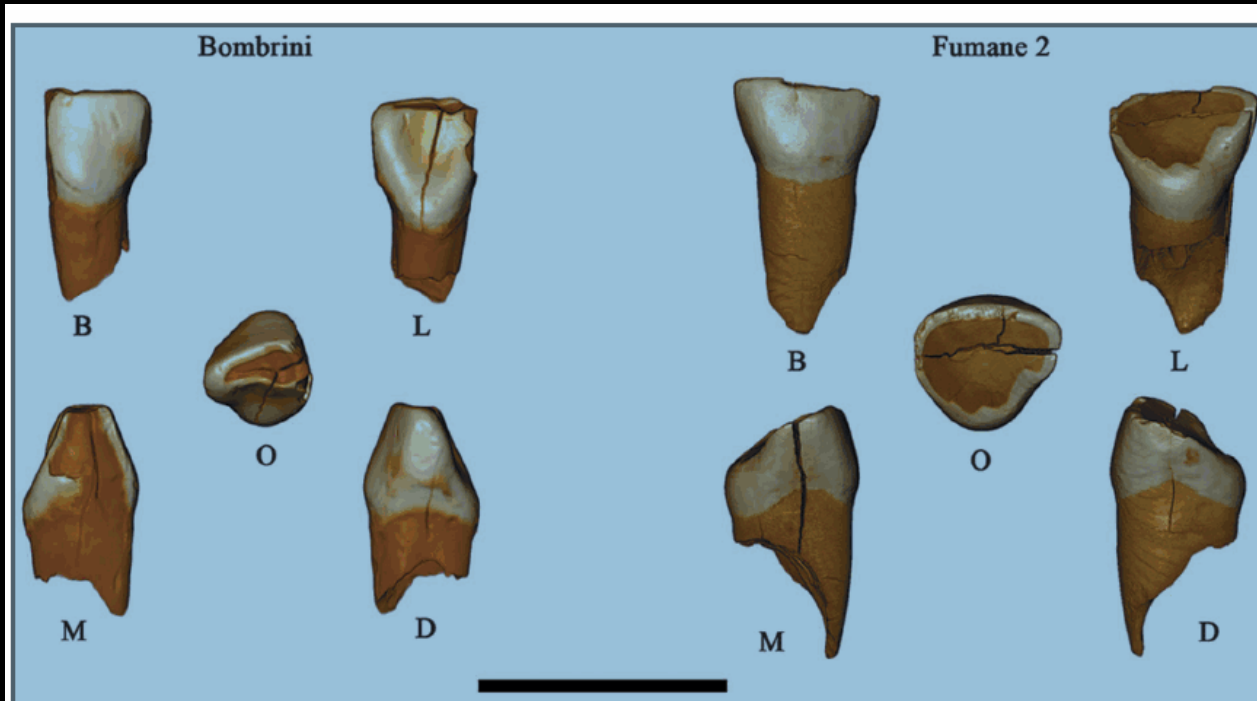
<sup>3</sup>Department of Anthropology, Loyola University Chicago, 6525 North Sheridan Road, Chicago, Illinois 60626, USA

Table 1 Radiocarbon ages of human skeletal remains from Vogelherd cave

Laboratory number	Specimen	Reported stratigraphic context	Collagen yield <sup>1</sup> (mg)	Material	Date <sup>2</sup> (BP)
KIA 20967	Stetten 1 cranium	AH V base	2.9	Collagen	4,910 ± 25
			1.7	Insoluble residue	4,970 ± 35
KIA 20969	Stetten 1 mandible <sup>2</sup>	AH V base	4.2	Collagen	4,985 ± 30
			0.7	Insoluble residue	5,070 ± 45
KIA 19538	Stetten 1 mandible	AH V base	3.8	Collagen	4,715 ± 35
			1.4	Insoluble residue	4,695 ± 35
KIA 19537	Stetten 2 cranium	AH IV top	3.5	Collagen	3,980 ± 35
			1.4	Insoluble residue	3,560 ± 30
KIA 19539	Stetten 4 vertebra	AH V base	1.3	Collagen	4,735 ± 30
			4.5	Insoluble residue	4,245 ± 25
KIA 19540	Stetten 3 humerus	AH V base	9.0	Organic preservative	135.1 ± 0.4 pMC <sup>3</sup> (AD 1962 or 1977)
			4.1	Collagen	4,995 ± 35
			2.2	Insoluble residue	5,175 ± 30

# The makers of the Protoaurignacian and implications for Neandertal extinction

S. Benazzi,<sup>1,2\*</sup> V. Slon,<sup>3</sup> S. Talamo,<sup>2</sup> F. Negrino,<sup>4</sup> M. Peresani,<sup>5</sup> S. E. Bailey,<sup>2,6</sup>  
S. Sawyer,<sup>3</sup> D. Panetta,<sup>7</sup> G. Vicino,<sup>8</sup> E. Starnini,<sup>9,10</sup> M. A. Mannino,<sup>2</sup> P. A. Salvadori,<sup>7</sup>  
M. Meyer,<sup>3</sup> S. Pääbo,<sup>3</sup> J.-J. Hublin<sup>2</sup>



**Fig. 1. Three-dimensional digital models of the Protoaurignacian human remains.** The Bombrini tooth is a lower left lateral deciduous incisor (Ldi<sub>2</sub>), whereas Fumane 2 is an upper right lateral deciduous incisor (Rdi<sub>2</sub>). B, buccal; D, distal; L, lingual; M, mesial; O, occlusal. Scale bar, 1 cm.

# Early modern humans from the Peștera Muierii, Baia de Fier, Romania

PNAS | November 14, 2006 | vol. 103 | no. 46 | 17199

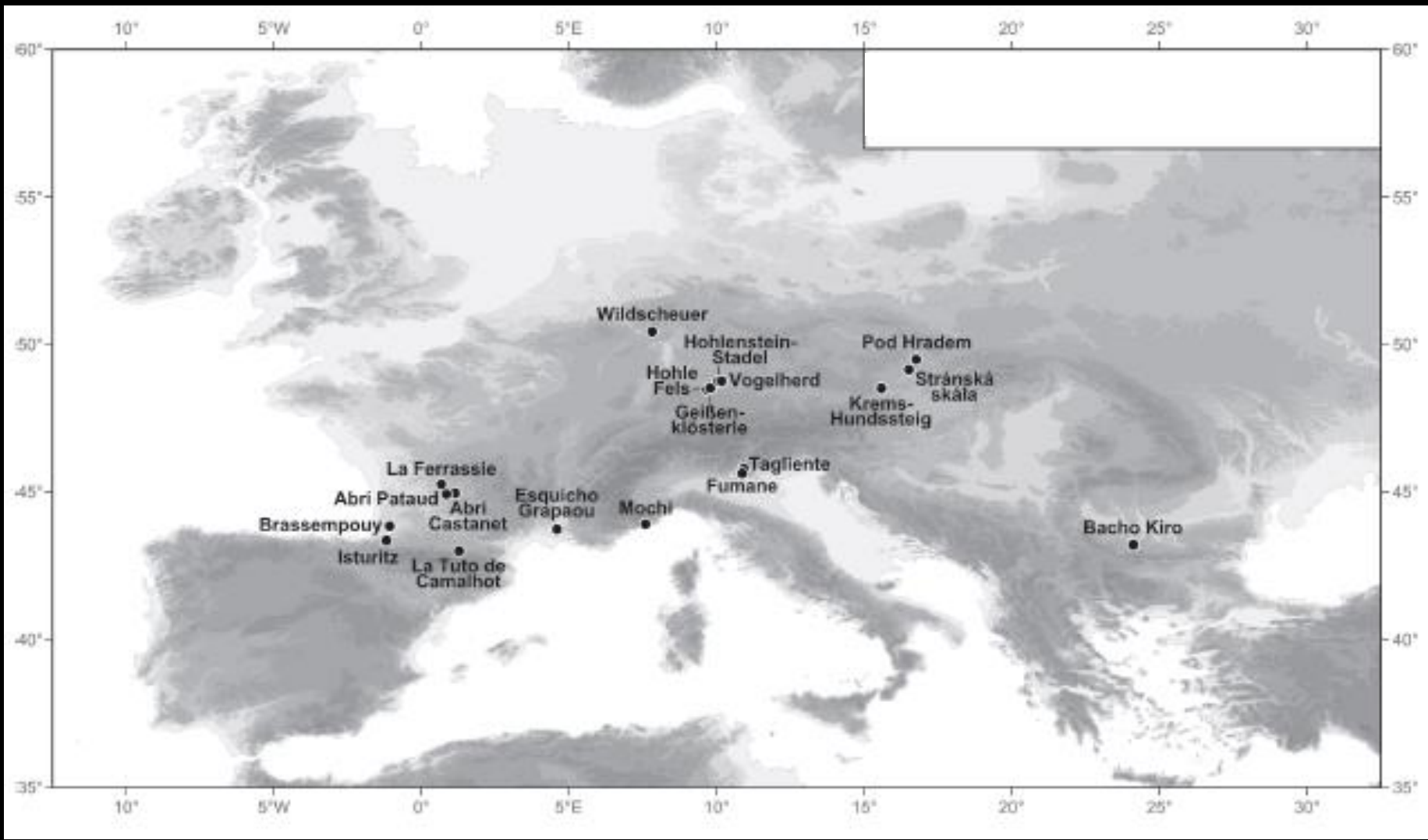
Andrei Soficaru\*, Adrian Doboș†, and Erik Trinkaus‡§



An early modern human from the Peștera cu Oase, Romania

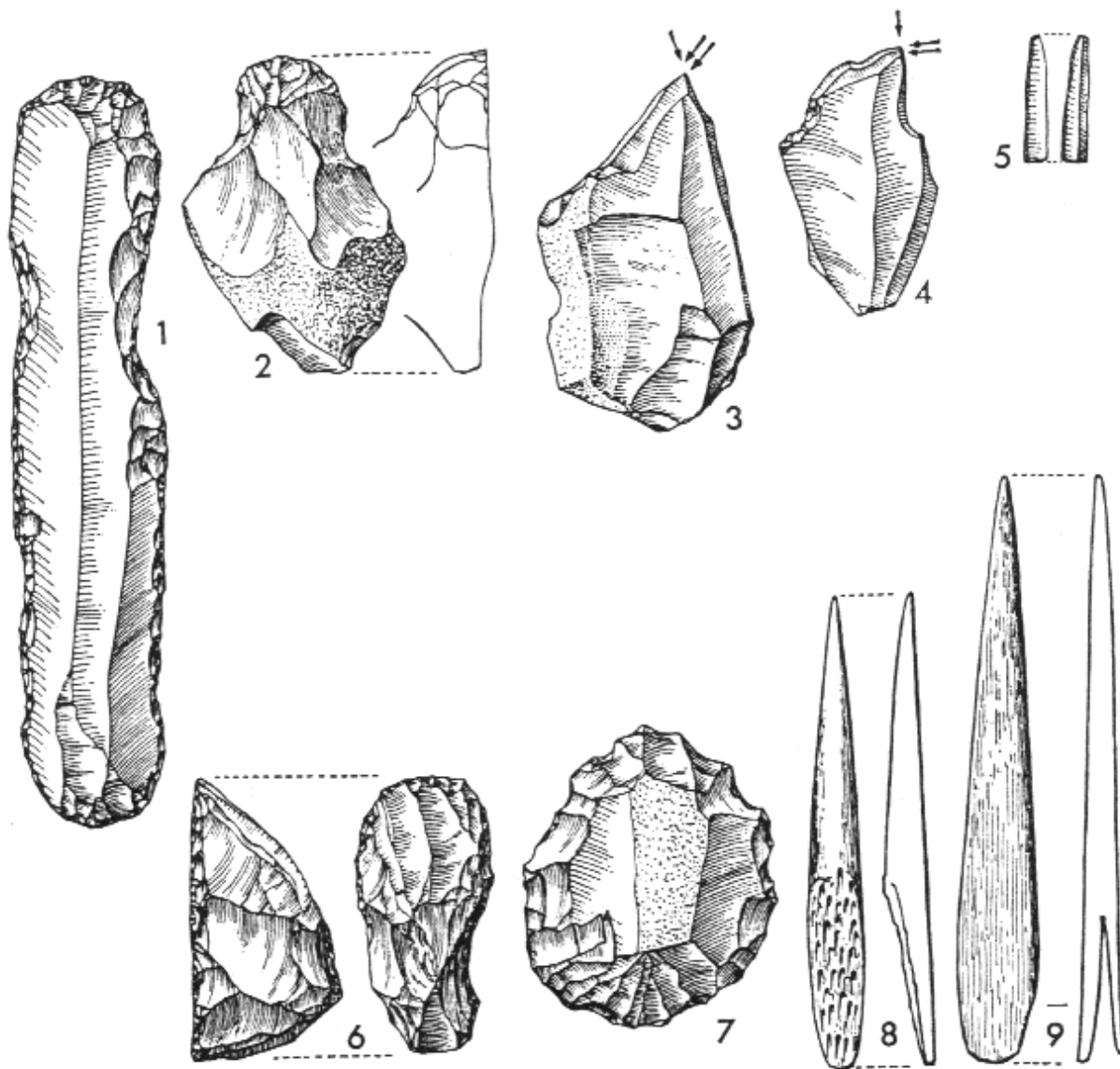


# Sites in the Jura Swabe



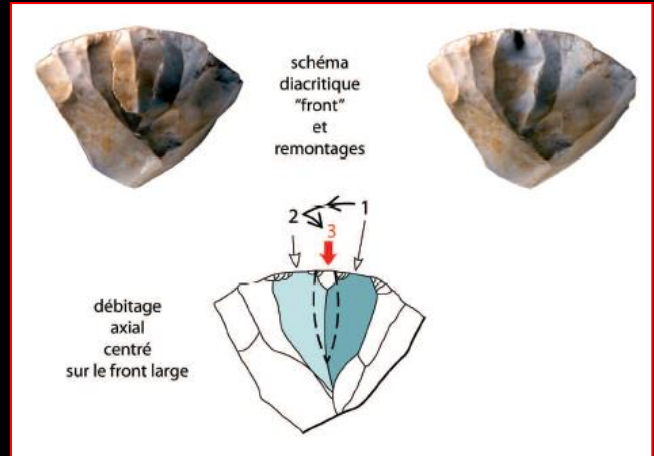
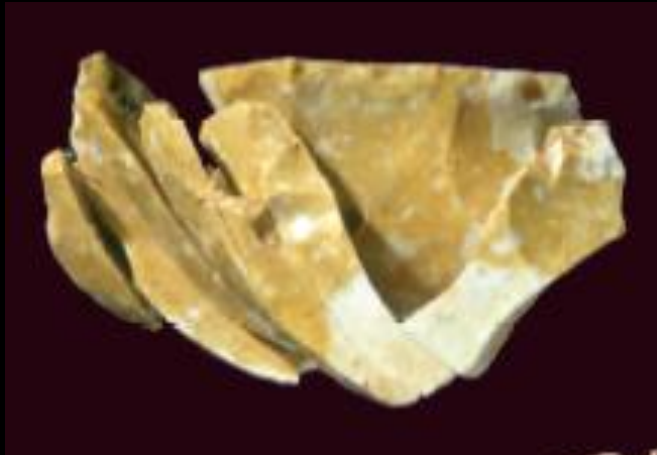
# **SUBDIVISION AND EVOLUTION OF THE AURIGNACIAN**

- **Late Aur.**
- **Classic Aur.**
- **Protoaurignacian (med.Eu)/Early Au. (central Eu)**



**1-grattatoio su lama aurignaziana, 2-grattatoio a muso, 3-bulino diedro, 4-bulino busquè, 5-lamella dufour, 6-grattatoio carenato, 7-grattatoio circolare, 8-zagaglia a base sbiecata, 9-zagaglia a base fenduta**

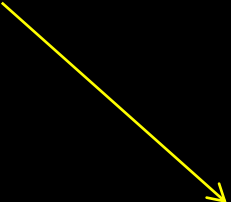
# Productions lamellaires à l'Aurignacien



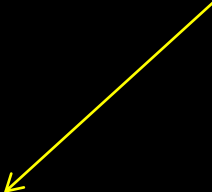


# Pointed bladelet (punta su lamella)

Lato ritoccato



Lato ritoccato

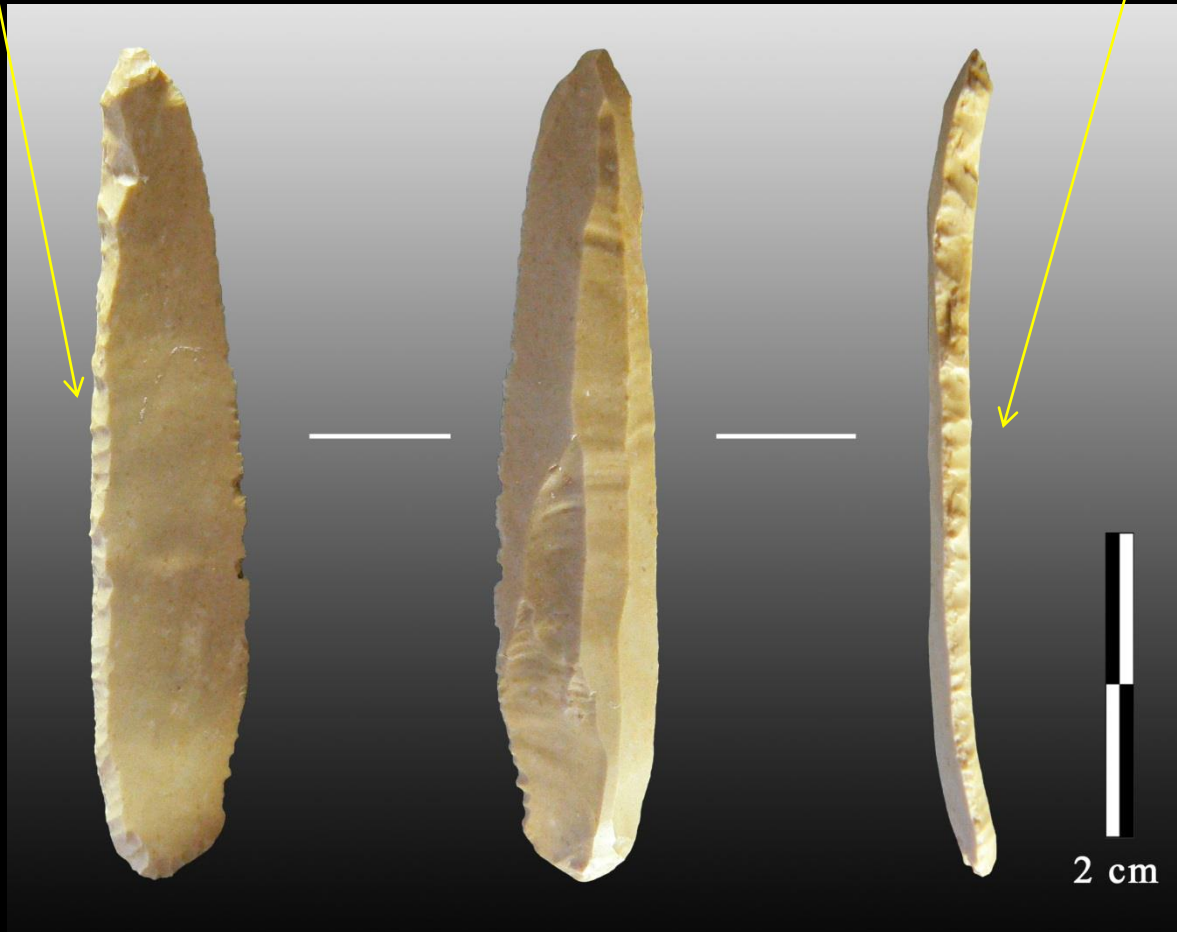


2 cm

# Dufour bladelet (lamella Dufour)

Lato ritoccato

Lato ritoccato



# Protoaurignacian

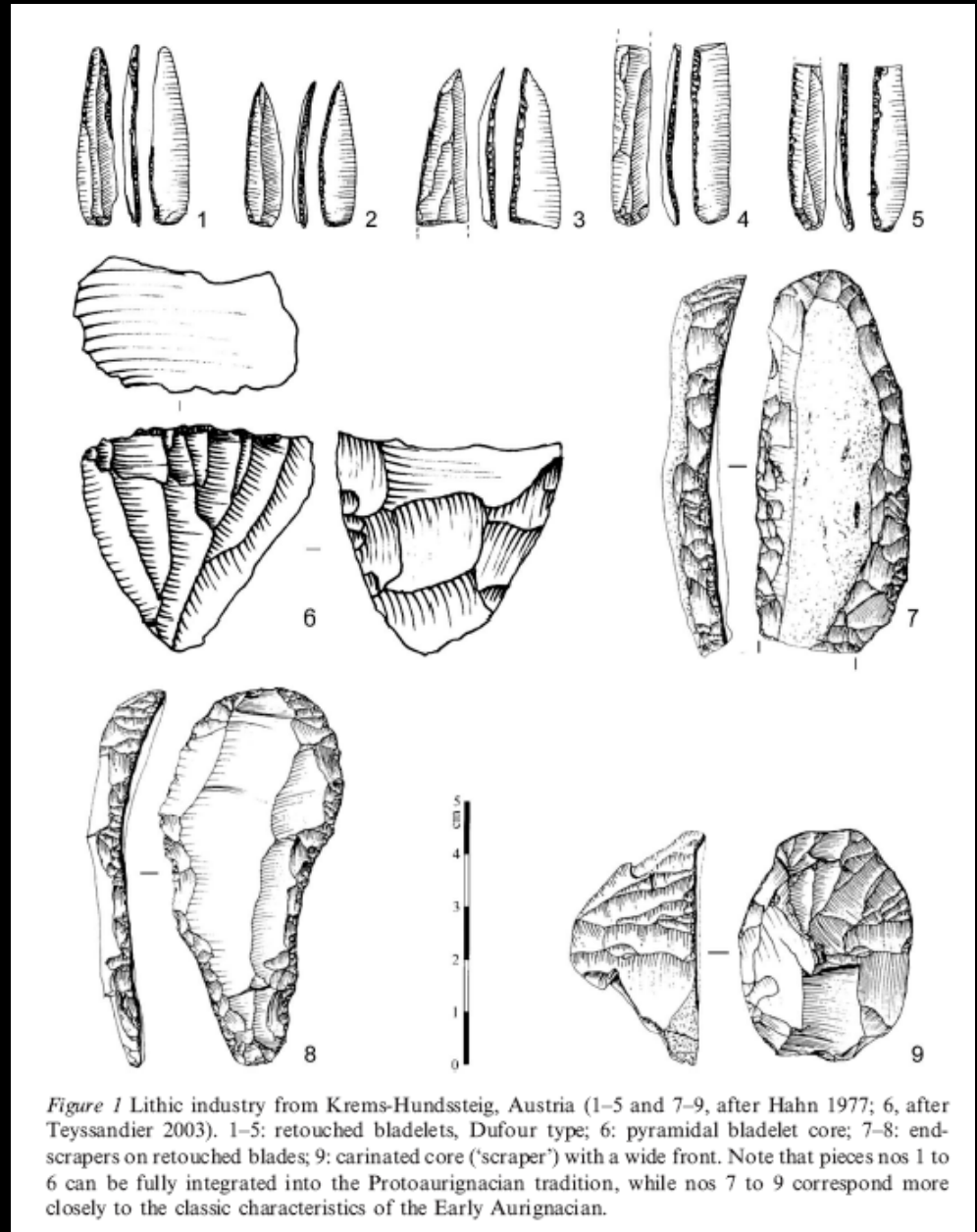
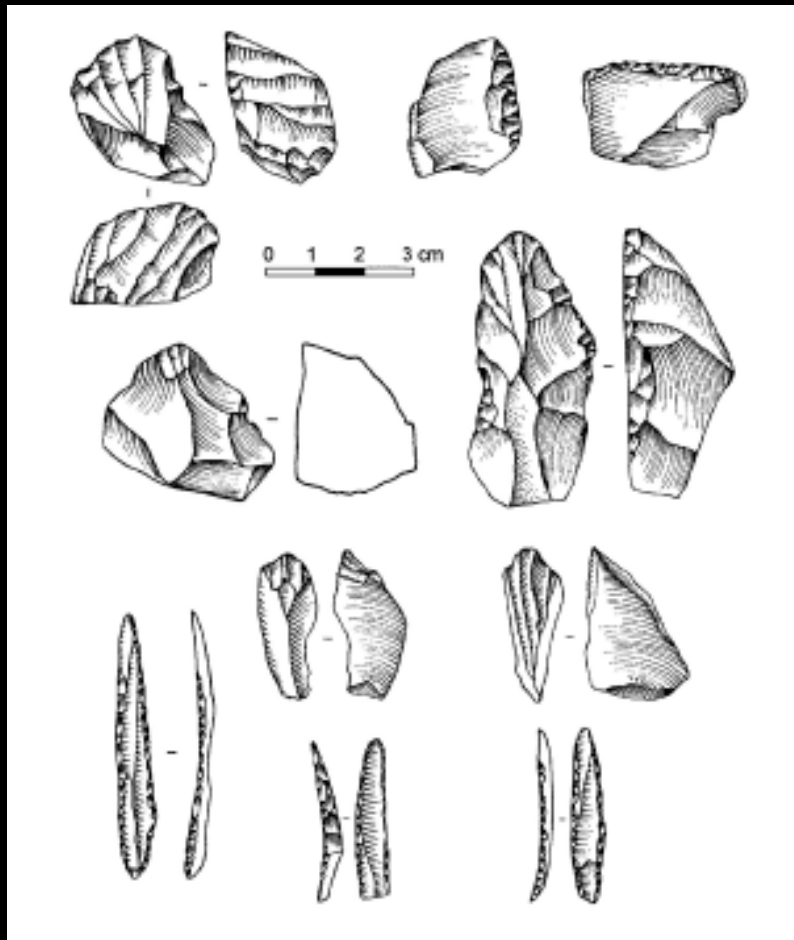


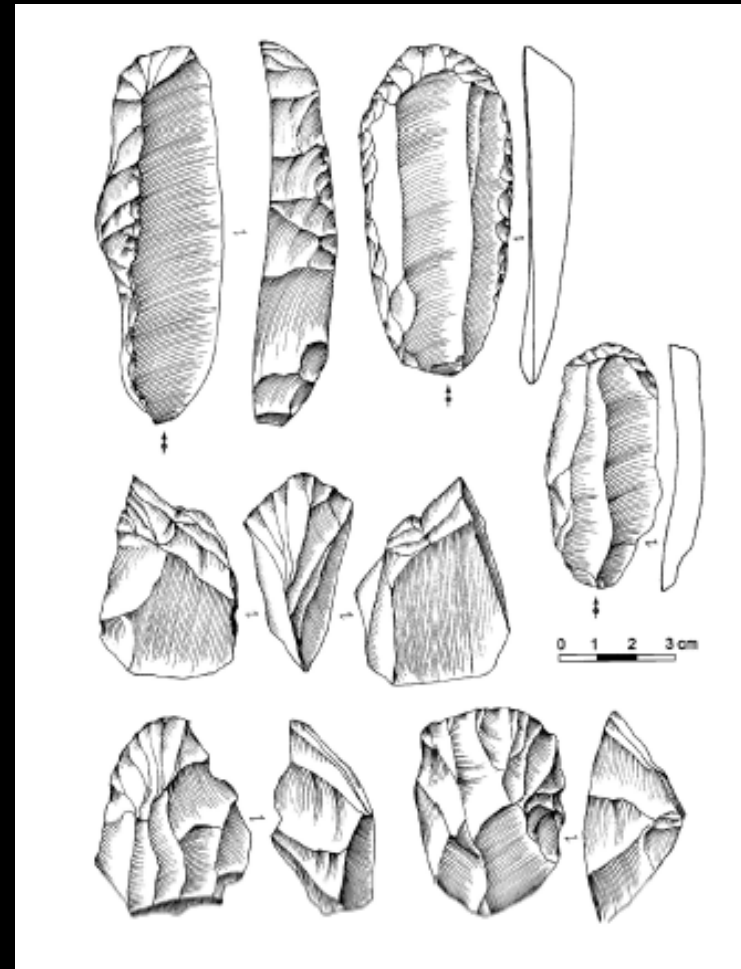
Figure 1 Lithic industry from Krems-Hundssteig, Austria (1-5 and 7-9, after Hahn 1977; 6, after Teyssandier 2003). 1-5: retouched bladelets, Dufour type; 6: pyramidal bladelet core; 7-8: end-scrapers on retouched blades; 9: carinated core ('scraper') with a wide front. Note that pieces nos 1 to 6 can be fully integrated into the Protoaurignacian tradition, while nos 7 to 9 correspond more closely to the classic characteristics of the Early Aurignacian.

## Krems-Hundssteig (Austria)

## Protoaurignacian correlates



**Warwasi, Iran. Lithic assemblages from layer Z.**



**Ust-Karakol, Siberia (Russia). Lithic assemblages from layers 9A to 11B.**

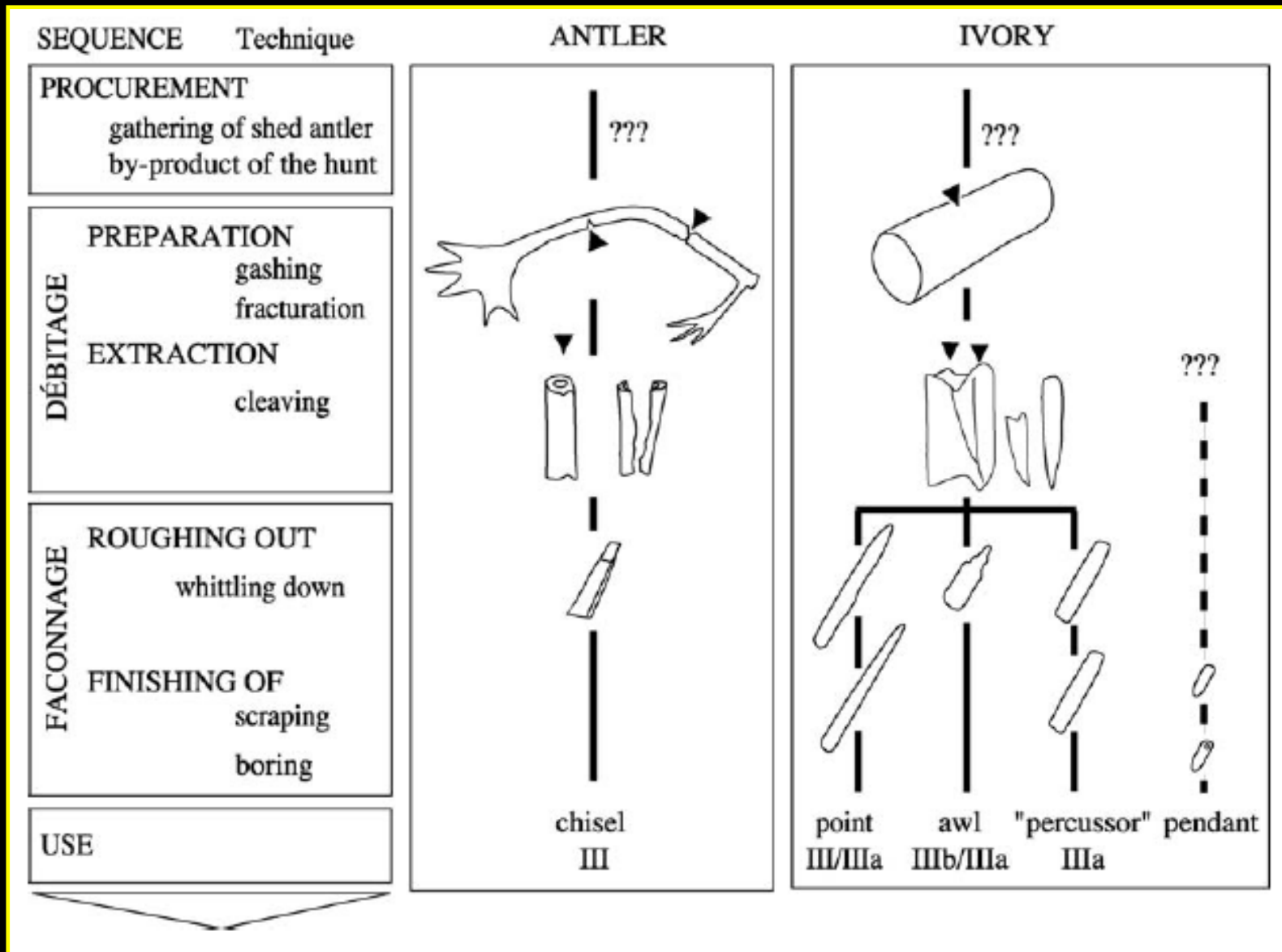


# Split-based points

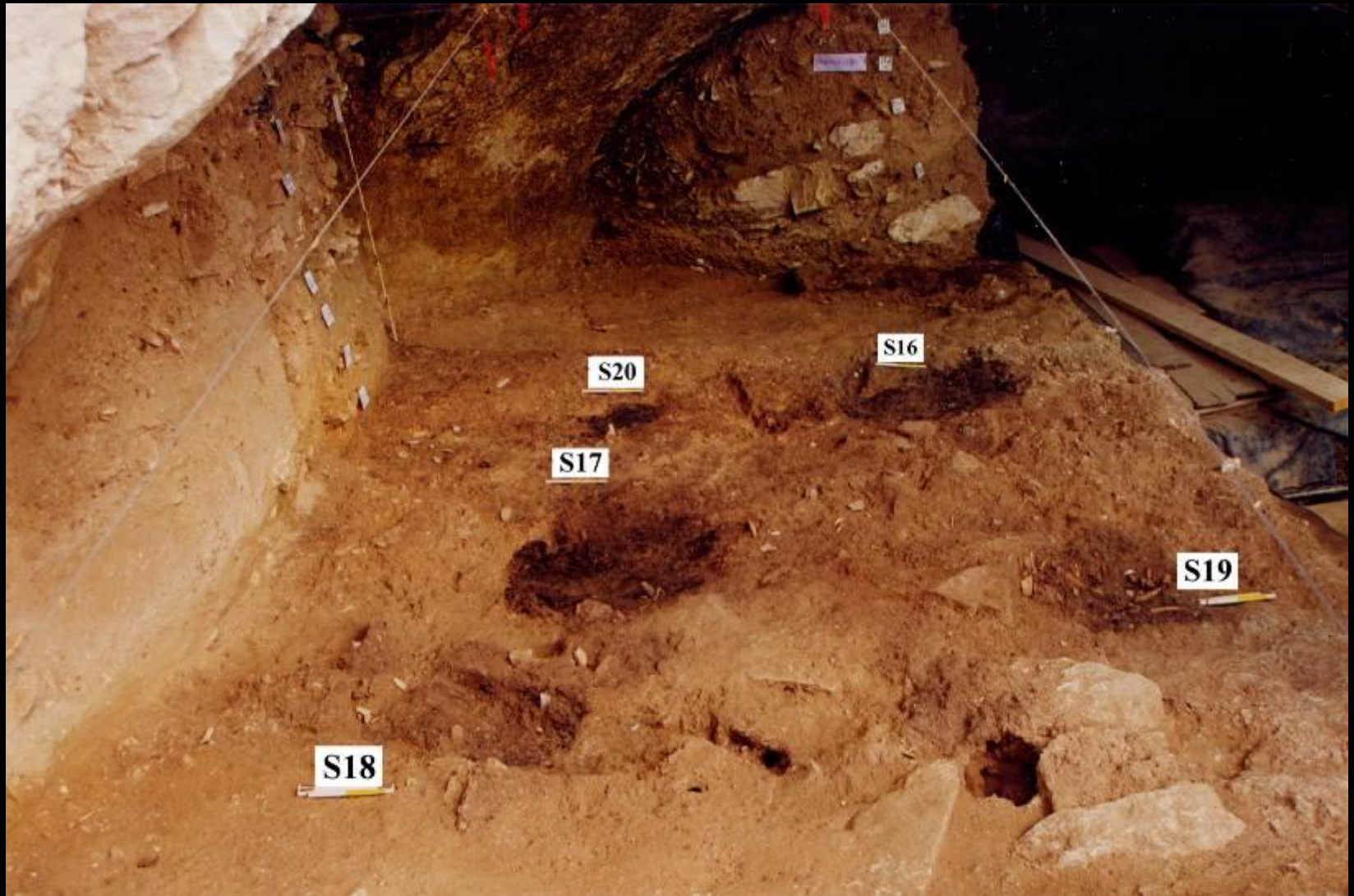


5 cm

# Geissenklosterle cave. Antler and ivory-working production sequences level III



## Fumane cave – Protoaurignacian hearths



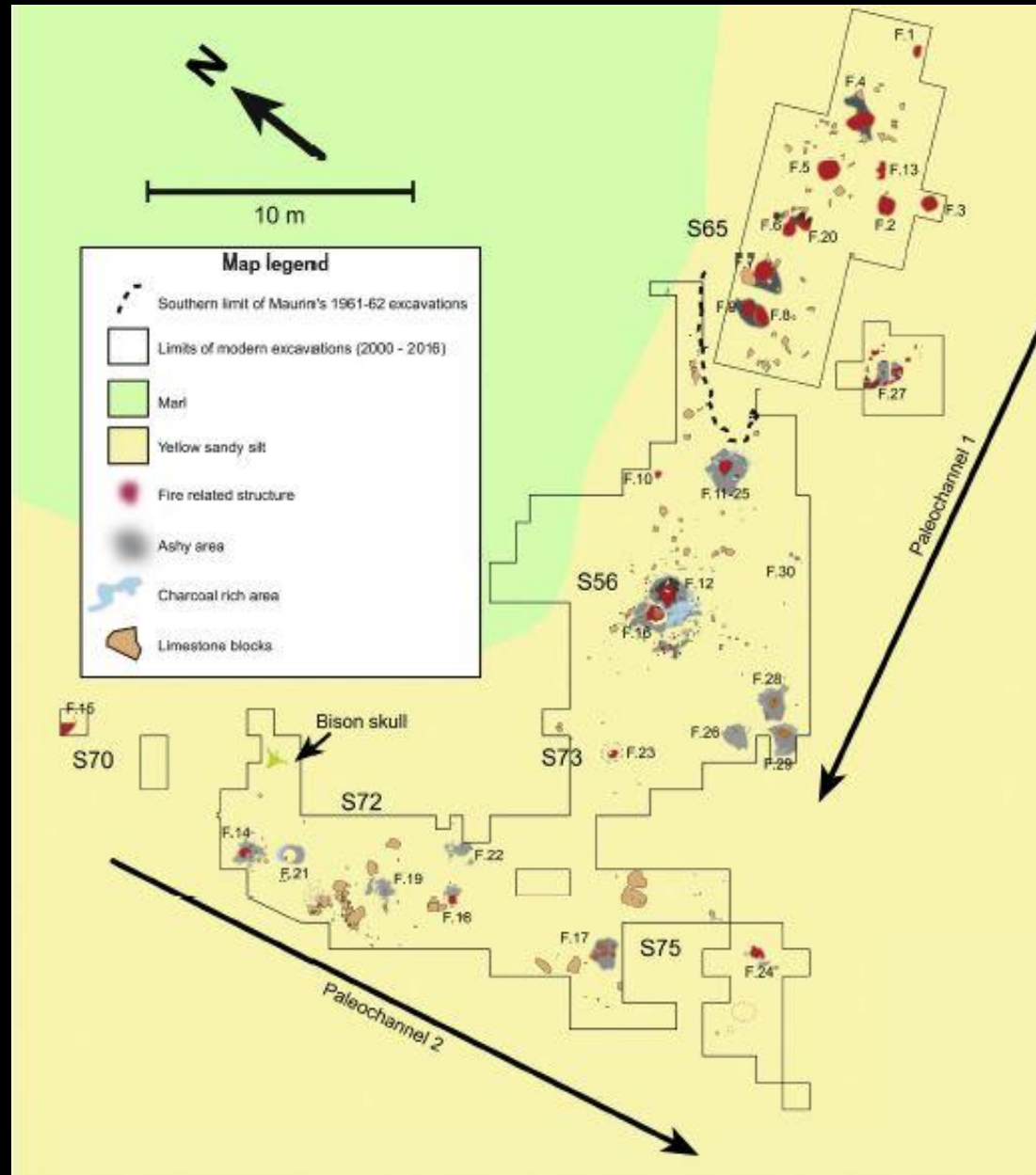


## Fumane cave – Protoaurignacian toss-zone



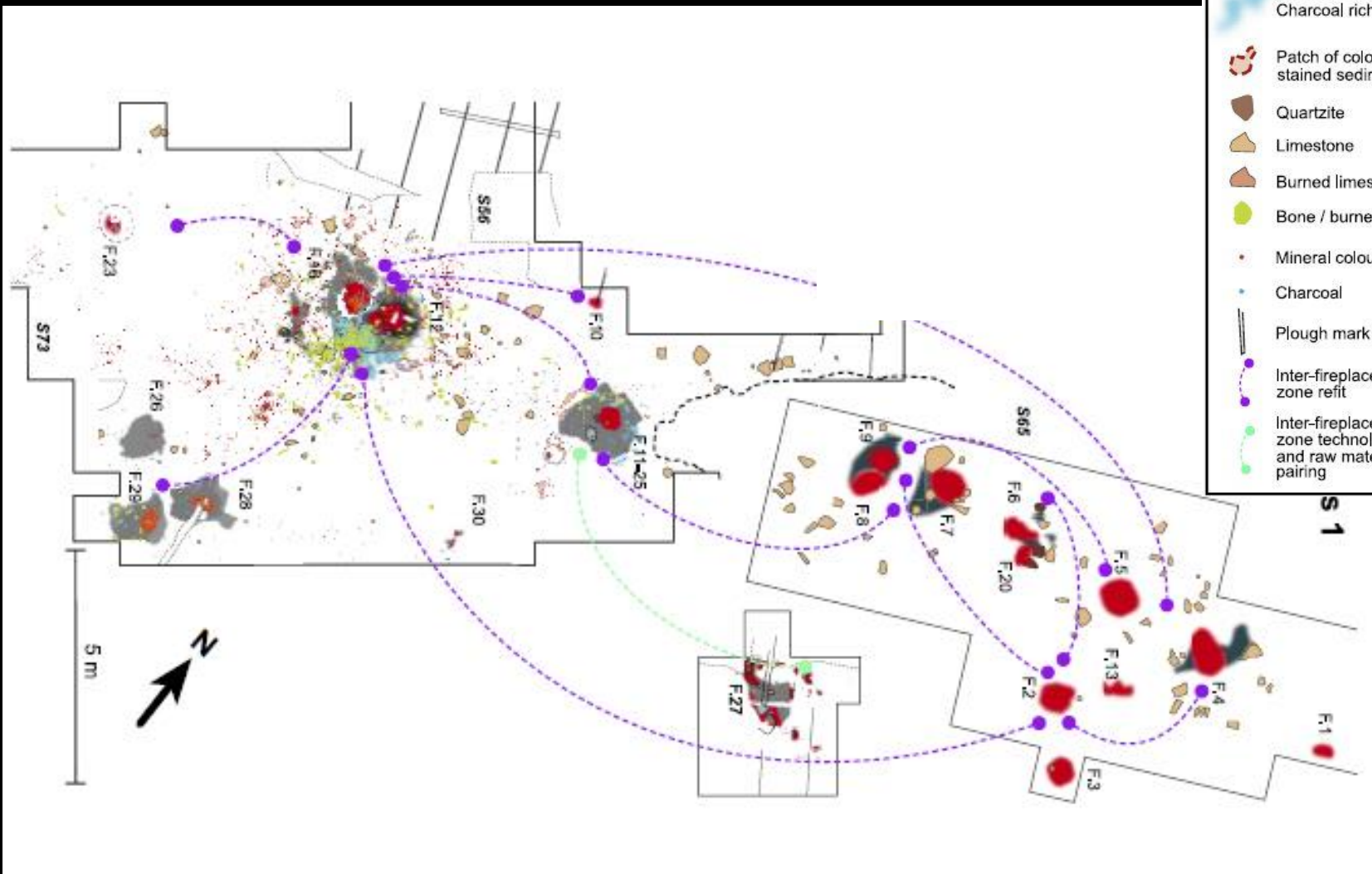


# Régismont-le-Haut (South France)



### Map Legend

- Southern limit to Maurin's 1961-62 excavations
- Fire related structure
- Ashy area
- Charcoal rich area
- Patch of colouring material stained sediment
- Quartzite
- Limestone
- Burned limestone
- Bone / burned bone
- Mineral colouring materials
- Charcoal
- Plough mark
- Inter-fireplace / zone refit
- Inter-fireplace / zone technological and raw material pairing



# Aurignacian art and ornaments





# Portable aurignacian art







**Fig. 1.** Four classes of symbolic artifacts that are first documented outside Africa. Examples from the Swabian Jura dating to ~35,000 years ago. (A) Mythical images; "Lionman", Hohlenstein-Stadel, height 29.6 cm. (Photo by Thomas Stephan, © Ulmer Museum). (B) Musical instruments; bone flute, Geißenklösterle, length 11.7 cm. (C) Ornaments formed in three dimensions; carved beads, Hohle Fels, maximum dimensions 7–11 mm. (D) Figurative art; mammoth, Vogelherd, length 3.7 cm. (B–D, Copyright University of Tübingen.)

**Fumane cave**

**The sciaman**

**41-36 ky BP**

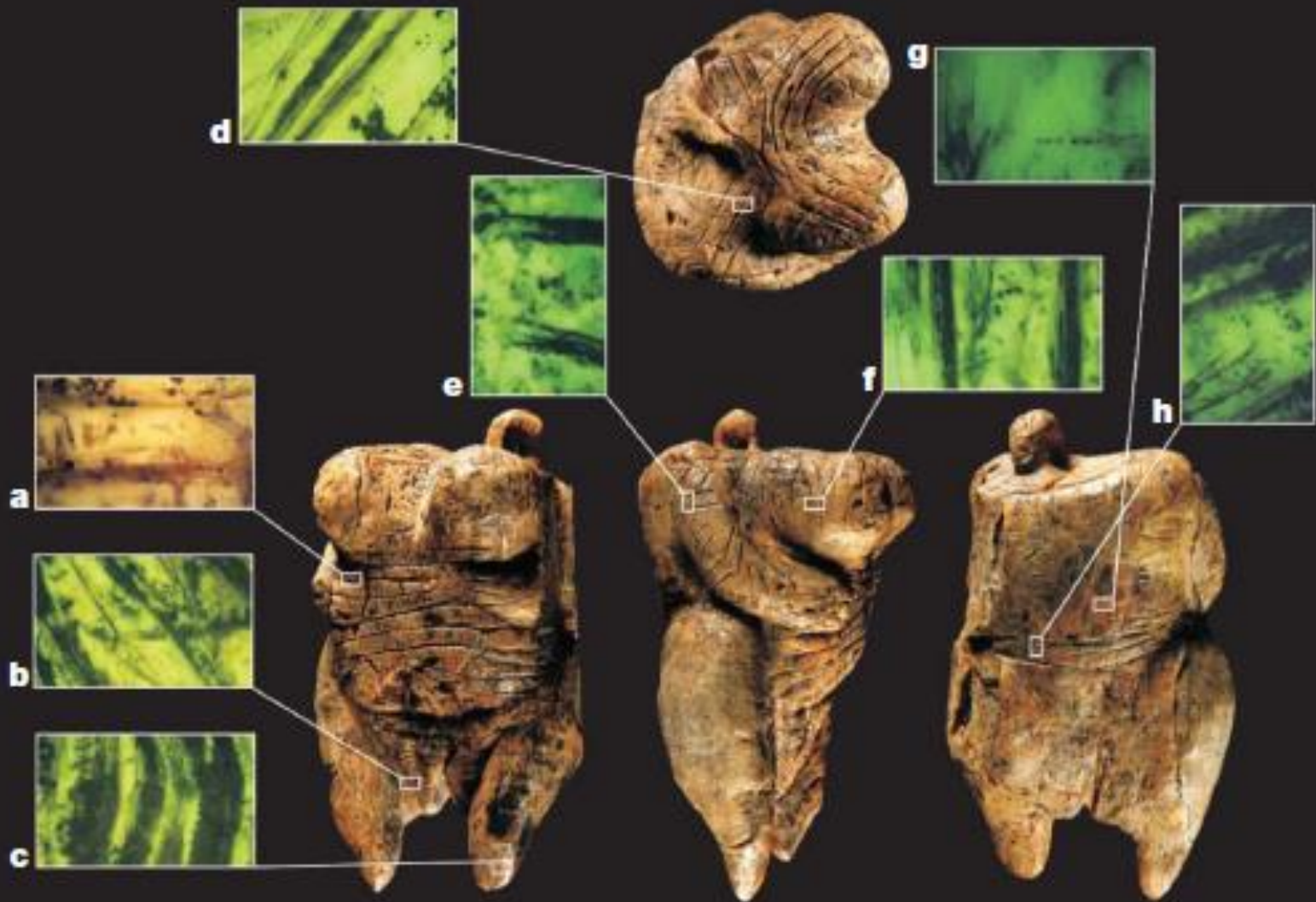


# A female figurine from the basal Aurignacian of Hohle Fels Cave in southwestern Germany

Nicholas J. Conard<sup>1</sup>

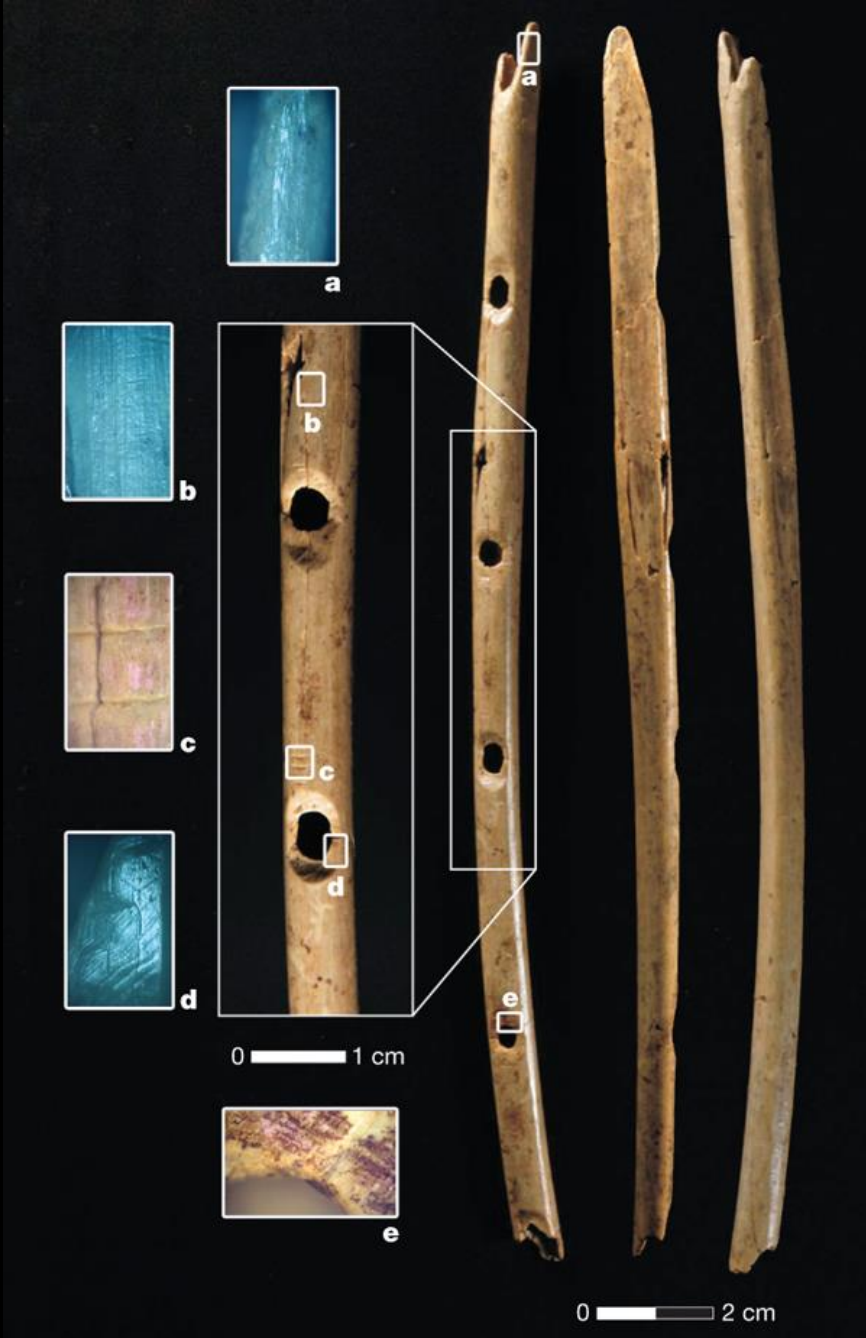






0 2 cm

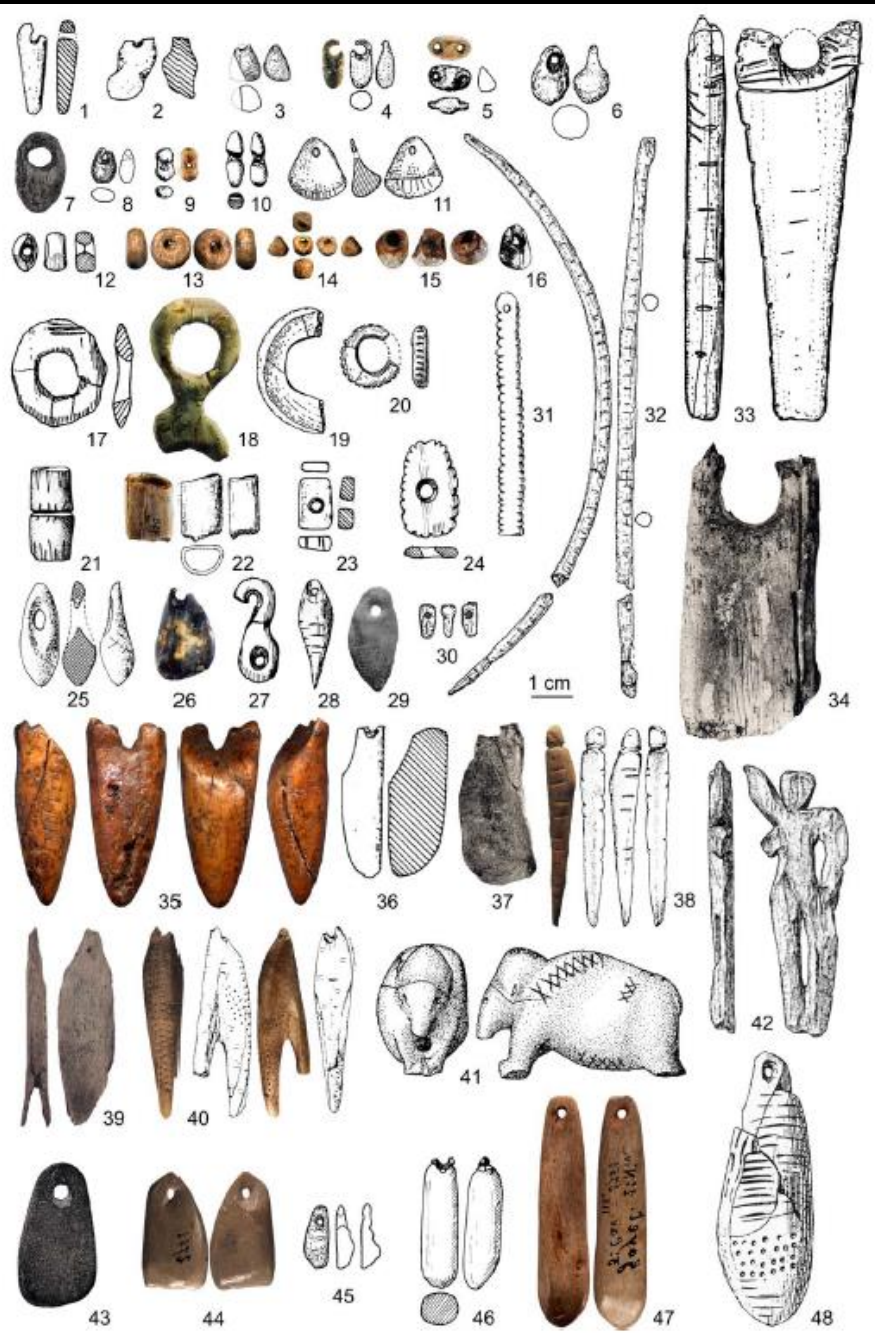




**Bone flute from Hohle Fels  
archaeological horizon Vb.**







Major shaped ornament types. 1, elongated steatite bead (Pendo); 2, asymmetric elongated stone bead (Pendo); 3, conical ivory pendant (Lommersum); 4, elongated ivory bead (Geissenklosterle); 5, bulged elliptical double-perforated ivory bead (Hohle Fels); 6, drop-shaped ivory pendant (Hohle Fels); 7, elliptical ivory pendant (Isturitz); 8, ovoid stone pendant (Wildscheuer); 9, bilobate ivory bead (Hohle Fels); 10, ivory lip-plug (Spy); 11, trianguloid ivory pendant (Gatzarria); 12, disk-shaped black stone bead (Spy); 13, disk-shaped ivory bead (Solutre); 14, ivory basket bead (Solutre); 15, stone basket bead (Garma); 16, bone basket bead (Mochi); 17, ivory ring (Spy); 18, ivory ring with protrusion (Renne); 19, stone ring (Gatzarria); 20, notched stone ring (Bockstein Torle); 21, tubular ivory bead (Spy); 22, tubular bone bead (Geissenklosterle); 23, rectangular flat ivory bead (Pendo); 24, elliptical flat notched ivory bead (Spy); 25, ogival ivory pendant (Prince); 26, pyramidal ivory pendant (Geissenklosterle); 27, figure-eight-shaped ivory bead (Spy); 28, pointed ivory pendant (Tuto de Camalot); 29, decorated pointed ivory pendant (Souquette); 30, wedge-shaped ivory bead (Kostienki 1); 31, ivory diadem (Ferrassie); 32, antler diadem (Geissenklosterle); 33, notched trapezoidal flat ivory pendant (Vogelherd); 34, rectangular ivory pendant (Isturitz); 35, pointed antler pendant (Rois); 36, elongated stone pendant (Pendo); 37, elongated amber pendant (Isturitz); 38, pointed notched ivory pendant with suspension groove (Tuto de Camalhot); 39, antler pendant on a split based point (Cellier); 40, forked ivory pendant (Blanchard); 41, zoomorphic ivory pendant (Vogelherd); 42, anthropomorphic schist pendant (Galgenberg); 43, flat stone pendant (Isturitz); 44, imitation in bone of a perforated horse incisor (Goyet); 45, imitation in antler of a perforated red deer canine (Istalosko); 46, elongated ivory pendant (Goyet); 47, elongated antler pendant (Goyet); 48, decorated ovoid ivory pendant (Tuto de Camalhot).

# Fumane: molluscan shell species presents in the Aurignacian



*Jujubinus striatus*



*Cyclope pellucida*



*Nassarius circumcinctus*



*Nassarius incrassatus*



*Nassarius mutabilis*



*Cyclope neritea*



*Clanculus corallinus*



*Clanculus jussieu*



*Homalopoma sanguineum*



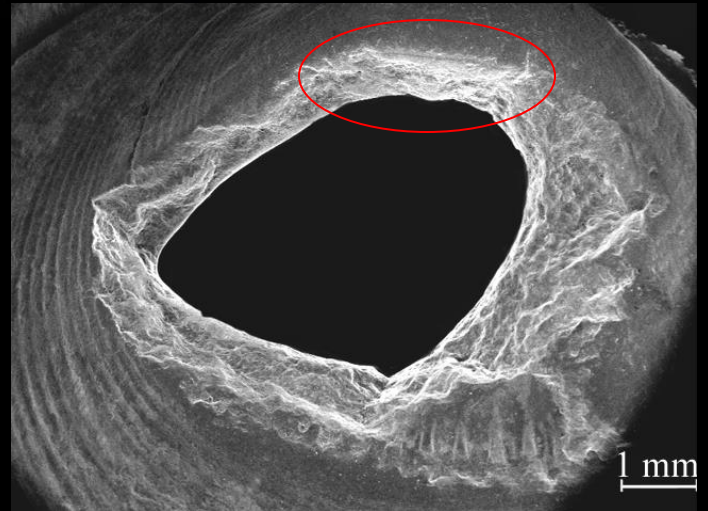
*Osilinus articulatus*

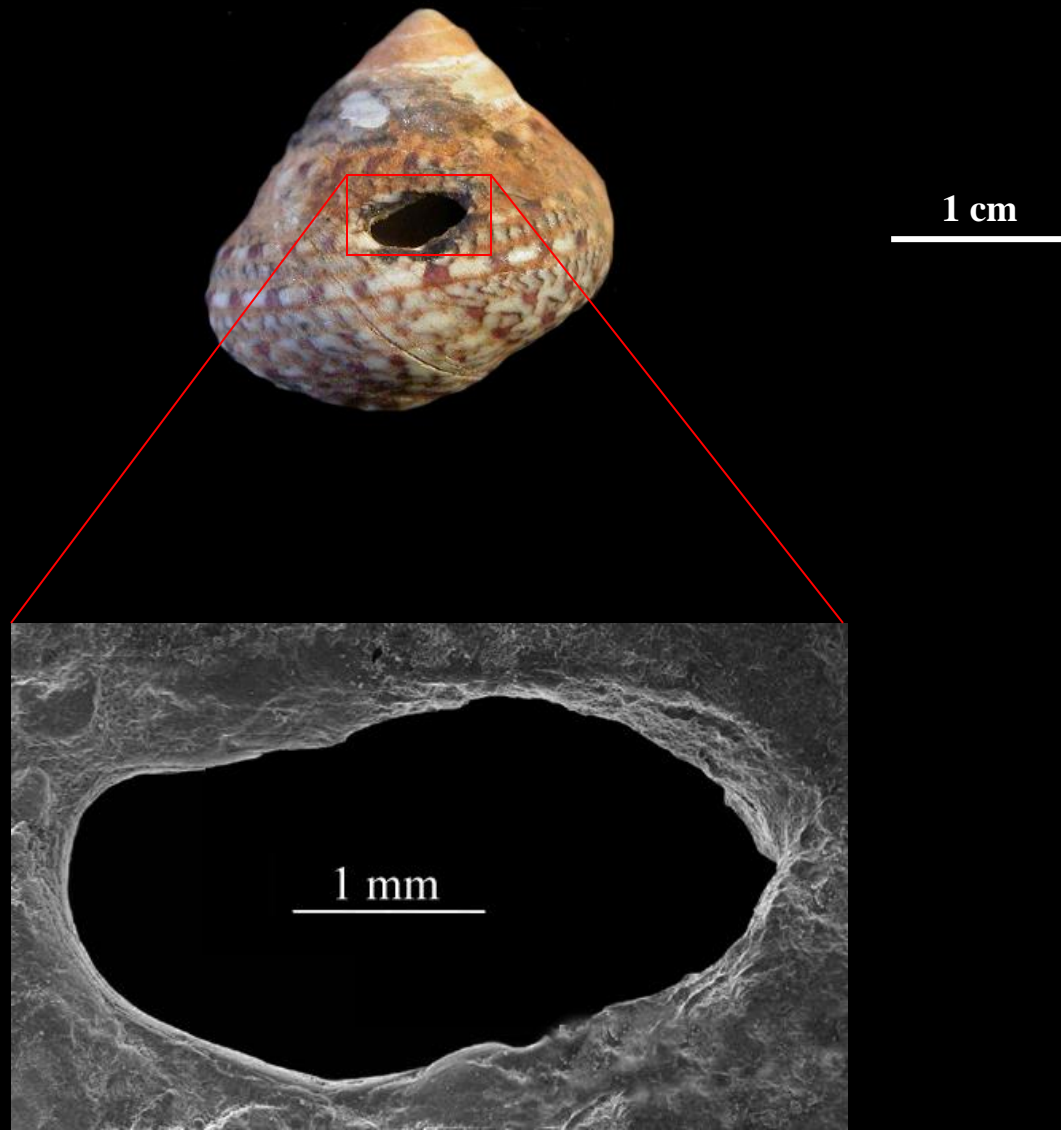


*Glycymeris insubrica*







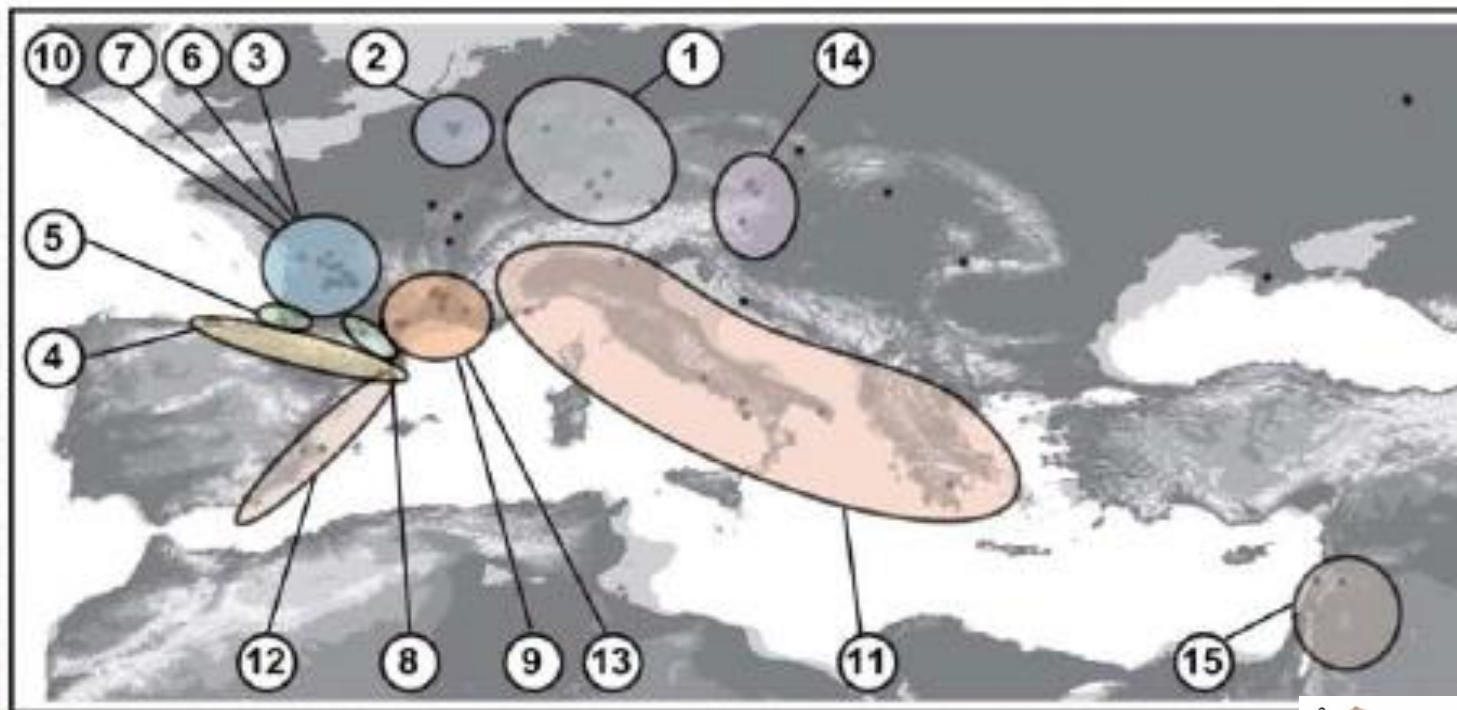


***Osilinus articulatus* with punctual abrasions caused by prolonged suspension**



**Teeth used as personal ornaments in the Aurignacian. 1, badger canine; 2, bear canine; 3, bear incisor; 4, fox canine; 5, bovid incisor; 6, fox incisor; 7, reindeer incisor; 8, reindeer canine; 9, beaver incisor; 10, horse canine; 11, horse incisor; 12, fallow deer incisor; 13, red deer canine; 14, red deer incisor; 15, hyena incisor; 16, hyena canine; 17, horse decidual incisor; 18, lion incisor; 19, wolf canine; 20, ibex incisor; 21, lion canine; 22, shark tooth; 23, human tooth; 24, wolf molar; 25, wolf incisor; 26, moose incisor; 27, lynx canine; 28, wild boar incisor.**





## Shells and ornaments: Europe and Near East, 40.000 yrBP

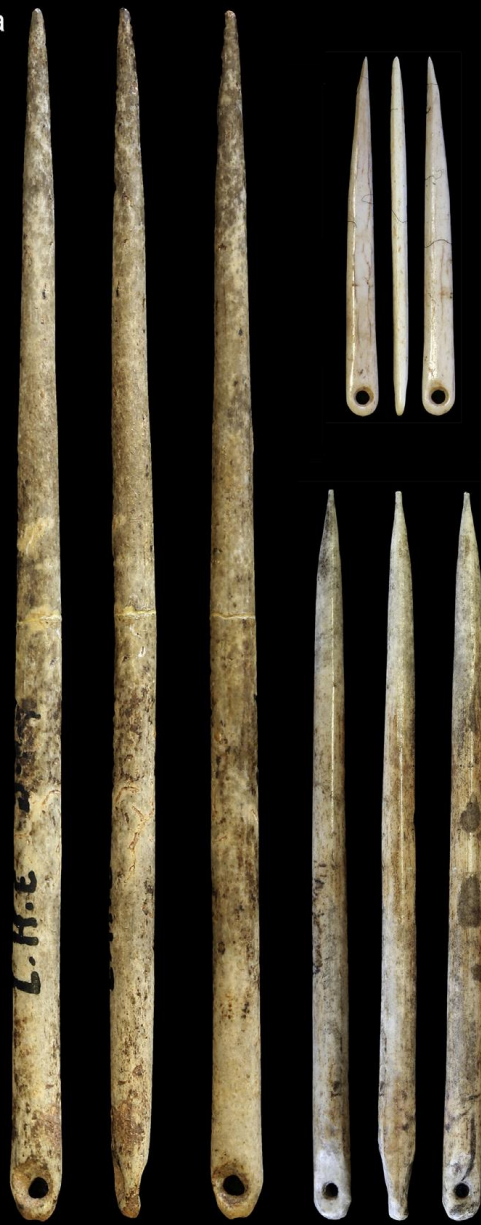
Aurignacian ethno-linguistic geography of Europe revealed by  
personal ornaments

Marian Vanhaeren <sup>a,b,\*</sup>, Francesco d'Errico <sup>c,d</sup>





a



Magdalenian needles from Laugerie-Haute Est