

Regolamento di Organizzazione Aziendale Parte II ORGANIGRAMMI

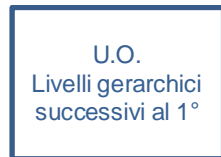
Aggiornato al 01/02/2017

INDICE

LEGENDA	pag. 3
SISTEMA RESPONSABILITÀ AZIENDALI	pag. 4-5
STAFF specifico DIRETTORE GENERALE	pag. 6
STAFF specifico DIRETTORE AMMINISTRATIVO	pag. 7
STAFF di DIREZIONE AZIENDALE	pag. 8
DISTRETTI DI COMMITTENZA E GARANZIA	pag. 9
IRCCS – ISTITUTO DELLE SCIENZE NEUROLOGICHE DI BOLOGNA	pag. 10-13
DIPARTIMENTI DI PRODUZIONE TERRITORIALE	
DIPARTIMENTO SANITÀ PUBBLICA	pag. 14-18
DIPARTIMENTO DELLE CURE PRIMARIE	pag. 19-20
DIPARTIMENTO SALUTE MENTALE – DIPENDENZE PATOLOGICHE	pag. 21-24
DIPARTIMENTI DI PRODUZIONE OSPEDALIERA	
DIPARTIMENTO CHIRURGICO	pag. 25-26
DIPARTIMENTO EMERGENZA	pag. 27-28
DIPARTIMENTO MATERNO INFANTILE	pag. 29
DIPARTIMENTO MEDICO	pag. 30-34
DIPARTIMENTO ONCOLOGICO	pag. 35
DIPARTIMENTO SERVIZI	pag. 36-39
DASS – DIREZIONE ATTIVITÀ SOCIO – SANITARIE	pag. 40
DATeR – DIREZIONE ASSISTENZIALE, TECNICA E RIABILITATIVA	pag. 41-42
DIPARTIMENTI DI SUPPORTO	
DIPARTIMENTO AMMINISTRATIVO	pag. 43
DAAT - DIPARTIMENTO ATTIVITA' AMMINISTRATIVE TERRITORIALI	pag. 44
DIPARTIMENTO TECNICO-PATRIMONIALE	pag. 45
DIPARTIMENTO FARMACEUTICO	pag. 46



LEGENDA ORGANIGRAMMI AZIENDALI



————— Linea afferenza gerarchica

- - - - - Linea afferenza funzionale

DENOMINAZIONE STRUTTURE/POSIZIONI

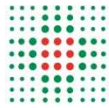
SC: Struttura Complessa

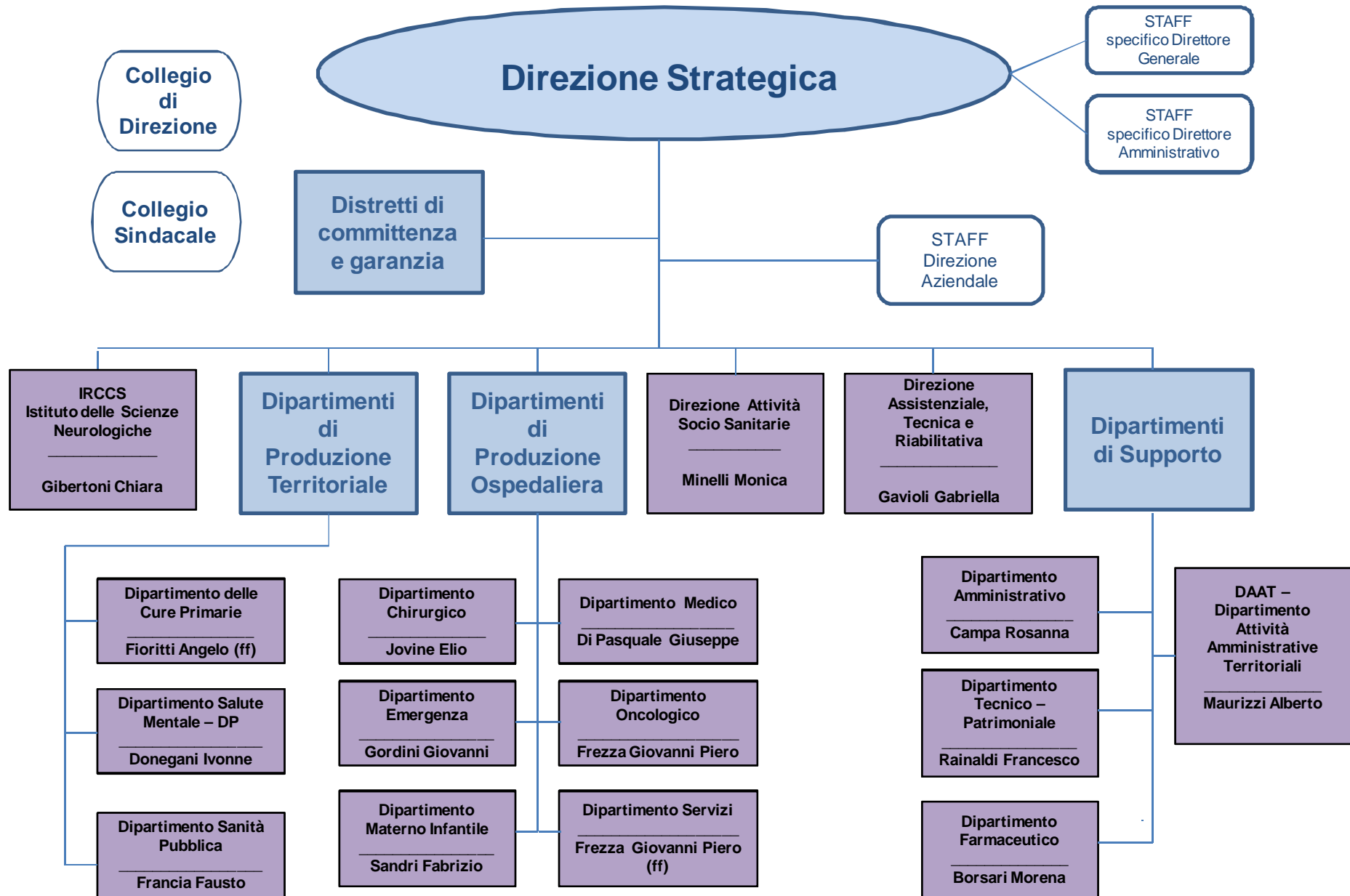
SSD: Struttura Semplice Dipartimentale

SS: Struttura Semplice

PO: Posizione Organizzativa

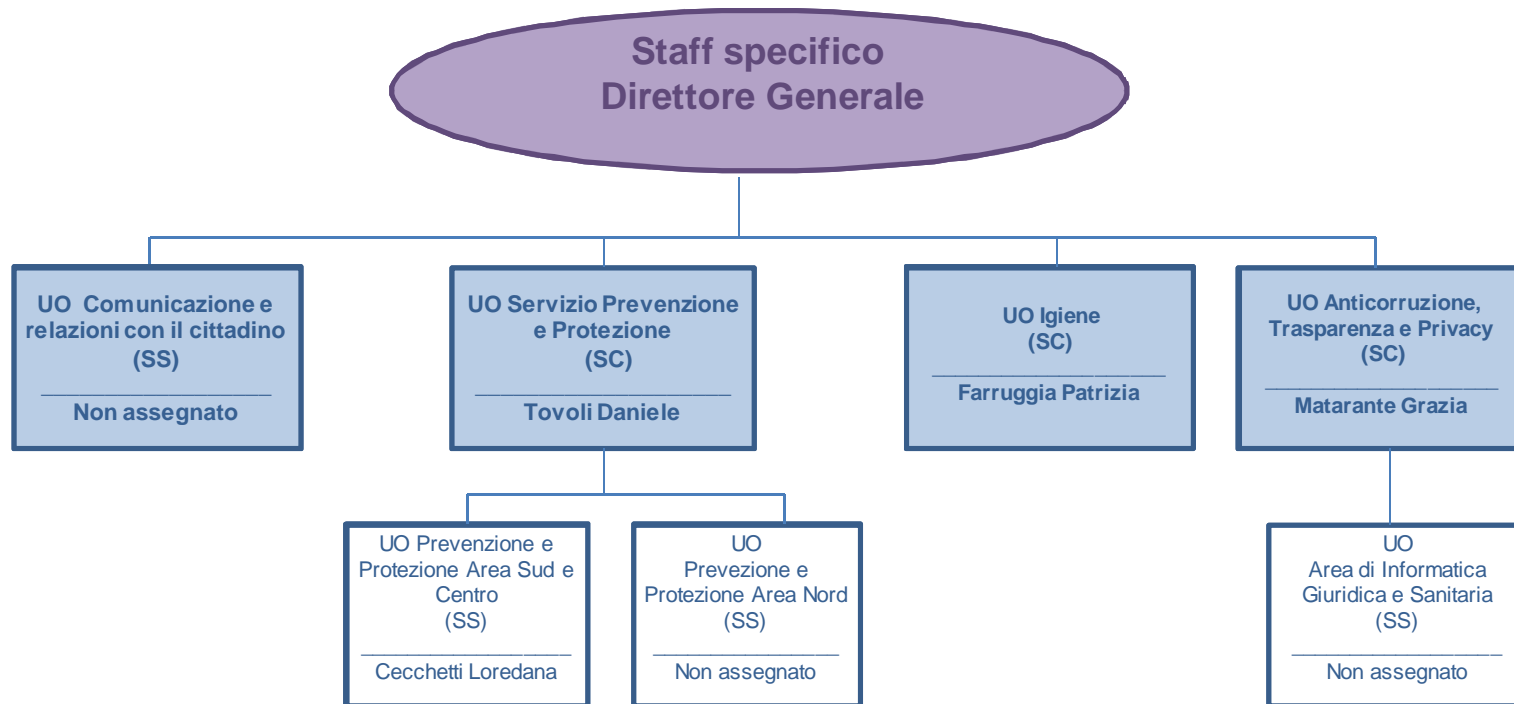
Inc. Prof. : Incarico Professionale





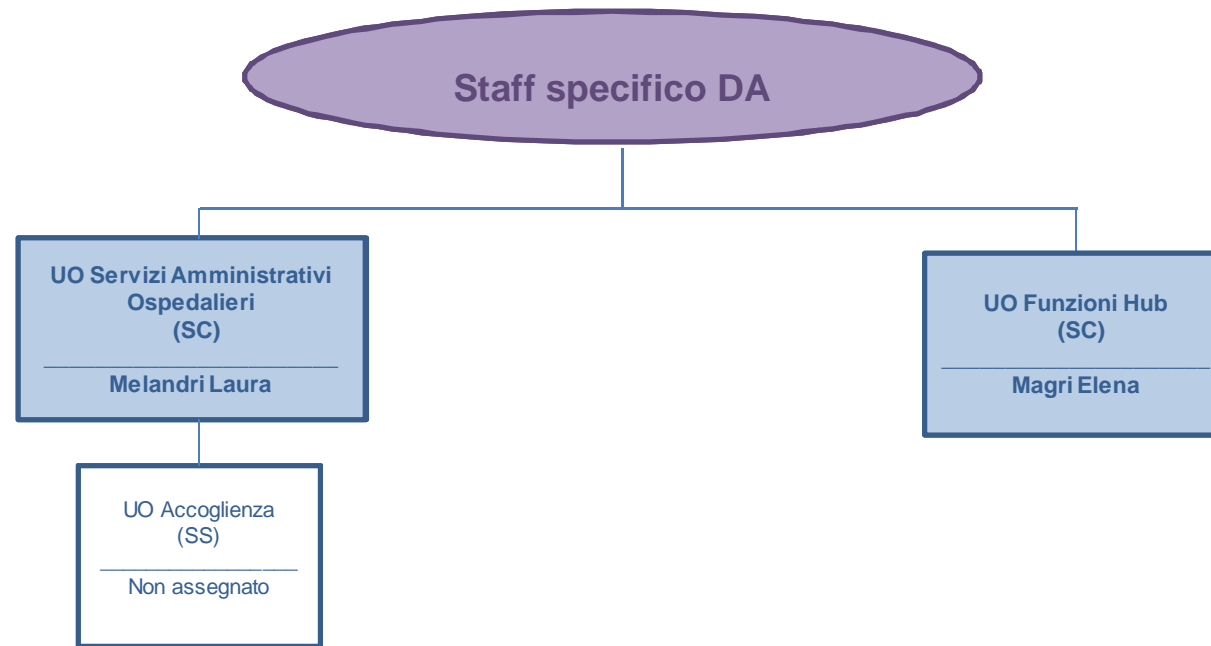


STAFF specifico Direttore Generale

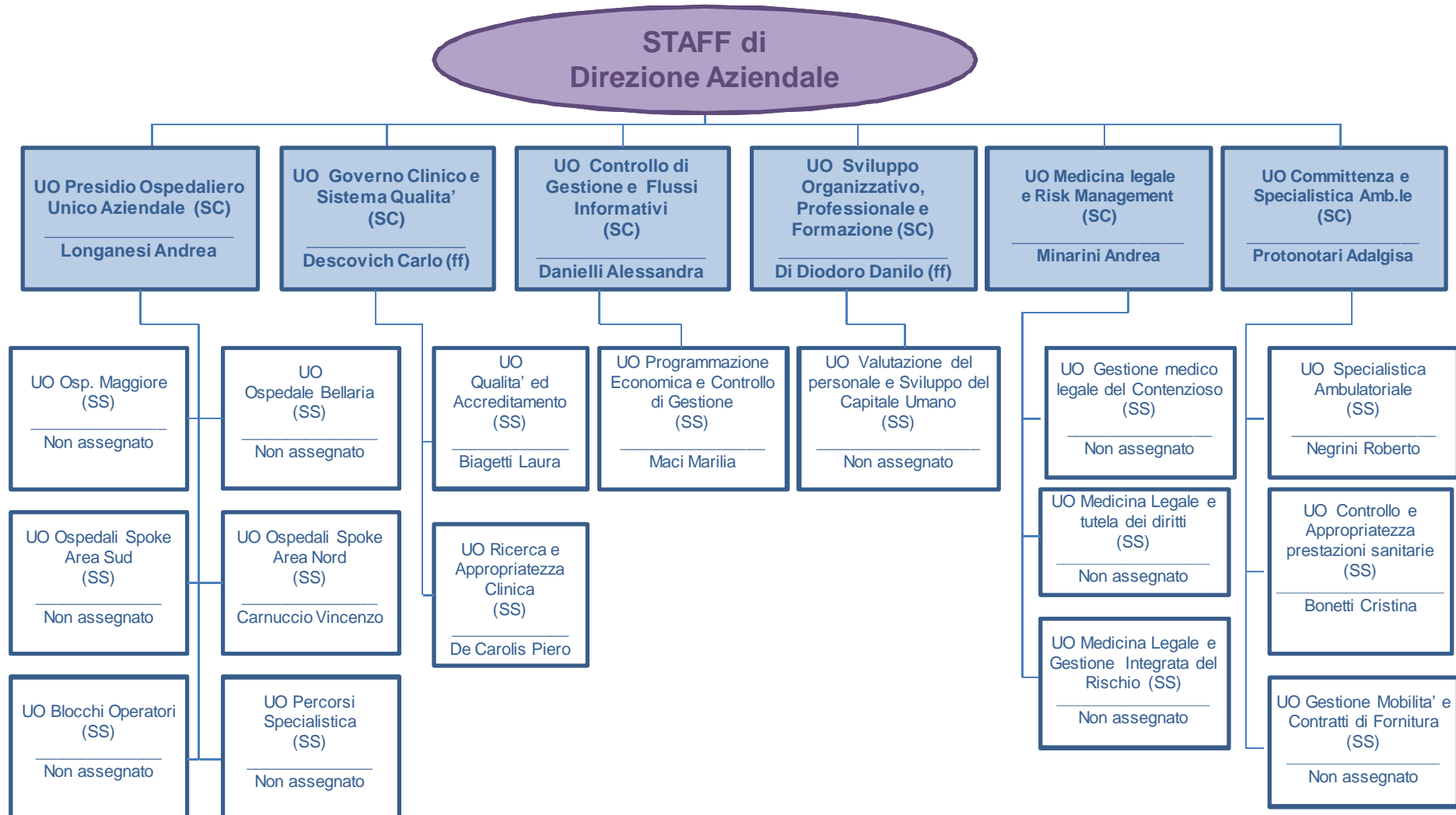




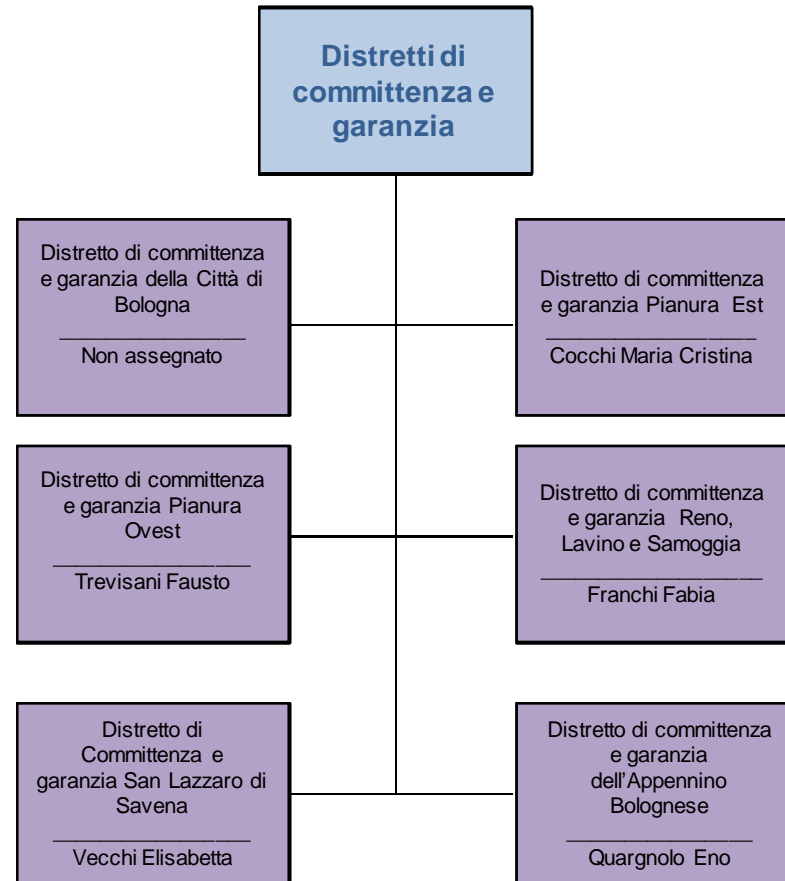
STAFF specifico Direttore Amministrativo



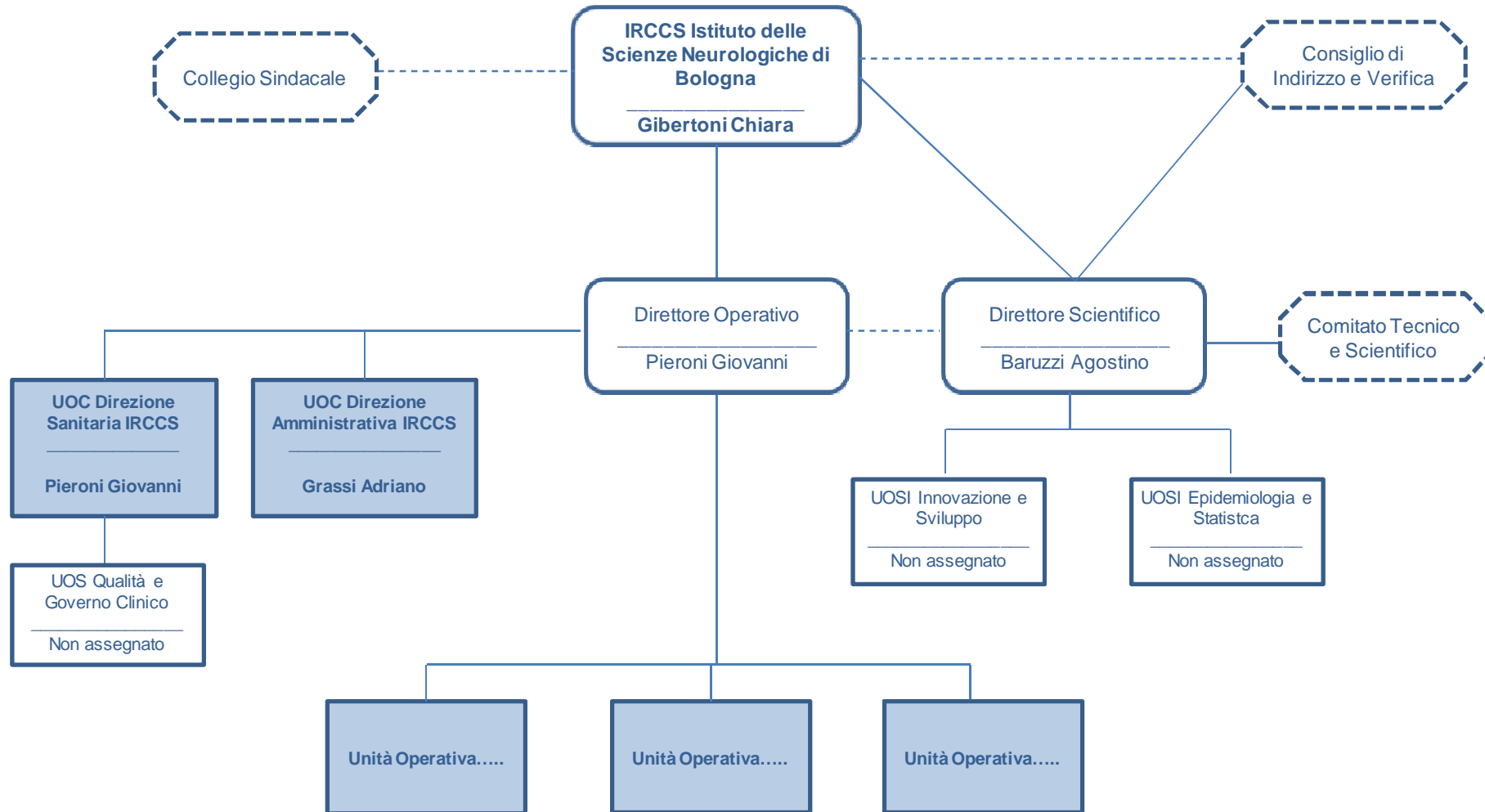
STAFF DI DIREZIONE AZIENDALE



Distretti di committenza e garanzia

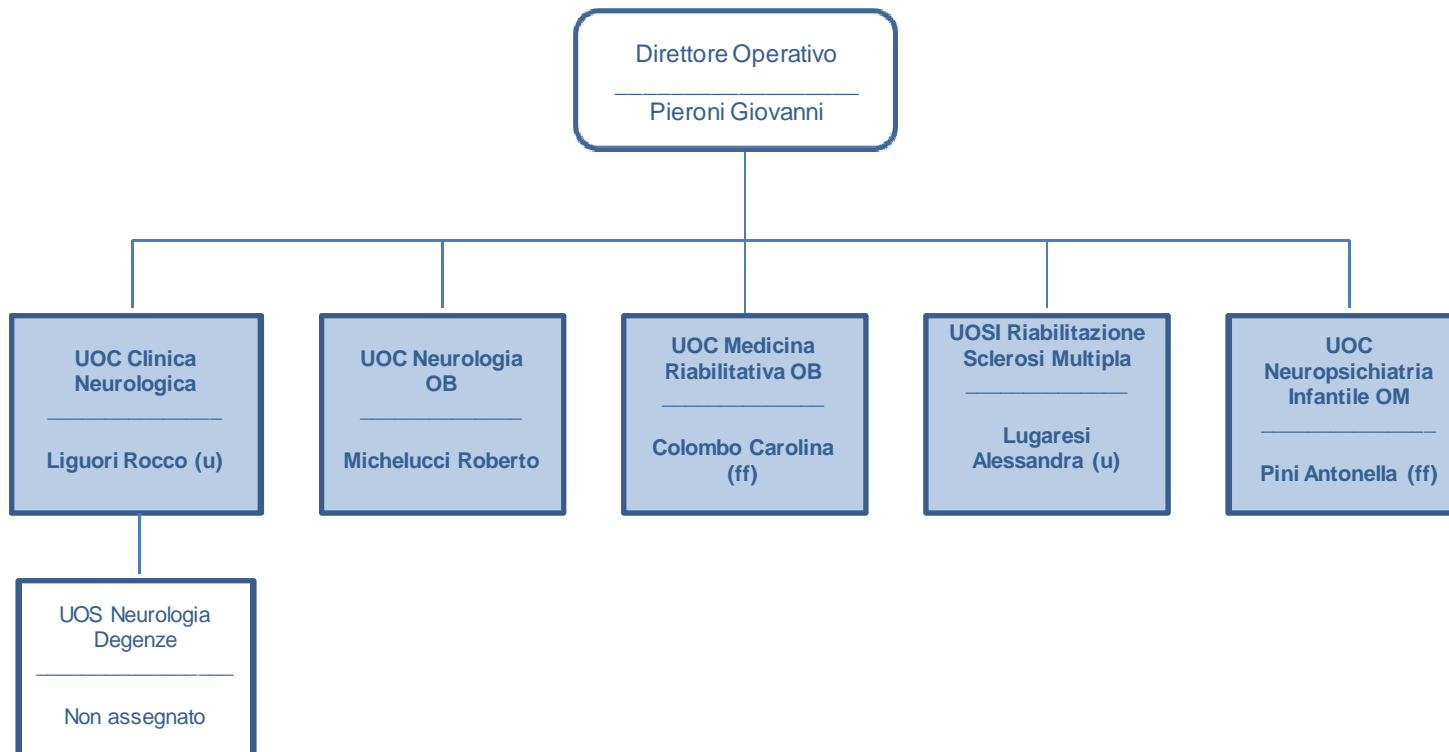


IRCCS Istituto delle Scienze Neurologiche di Bologna



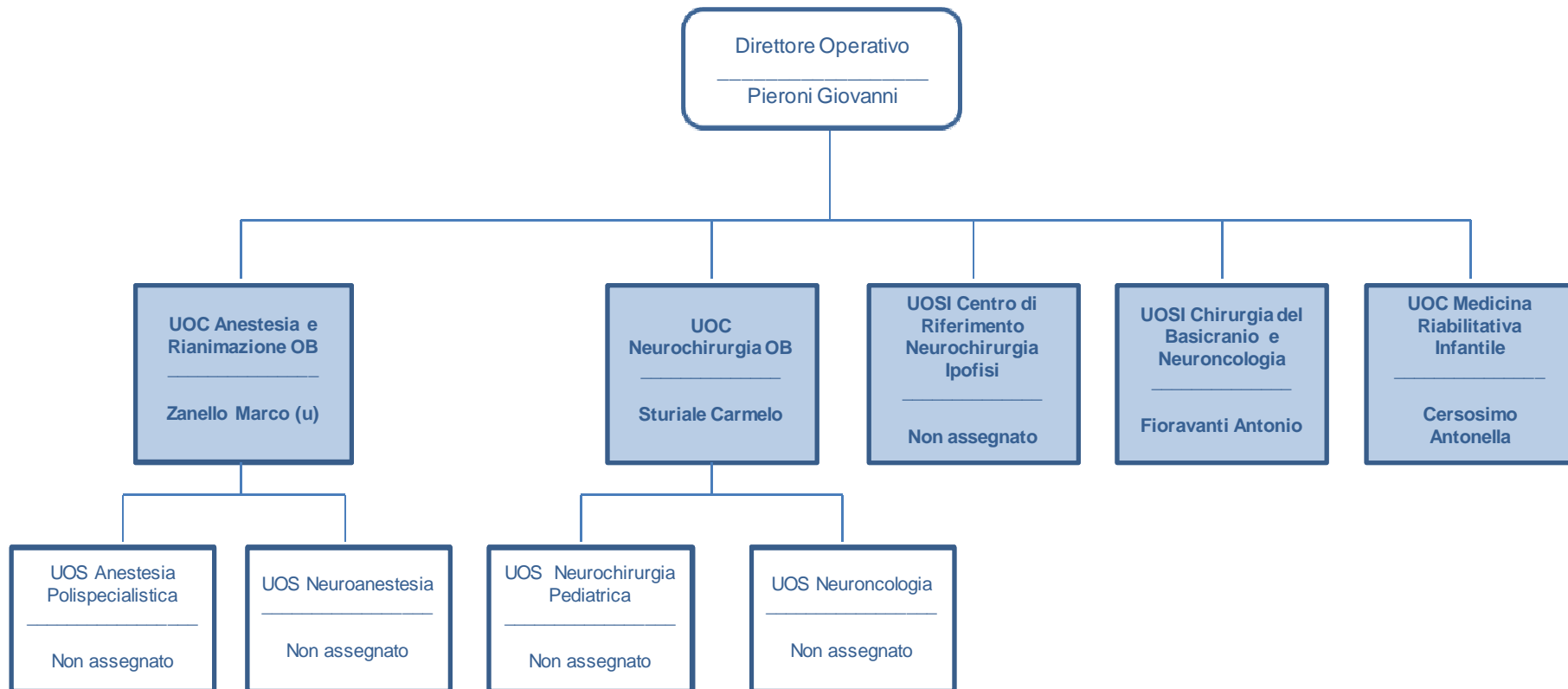


IRCCS Istituto delle Scienze Neurologiche di Bologna



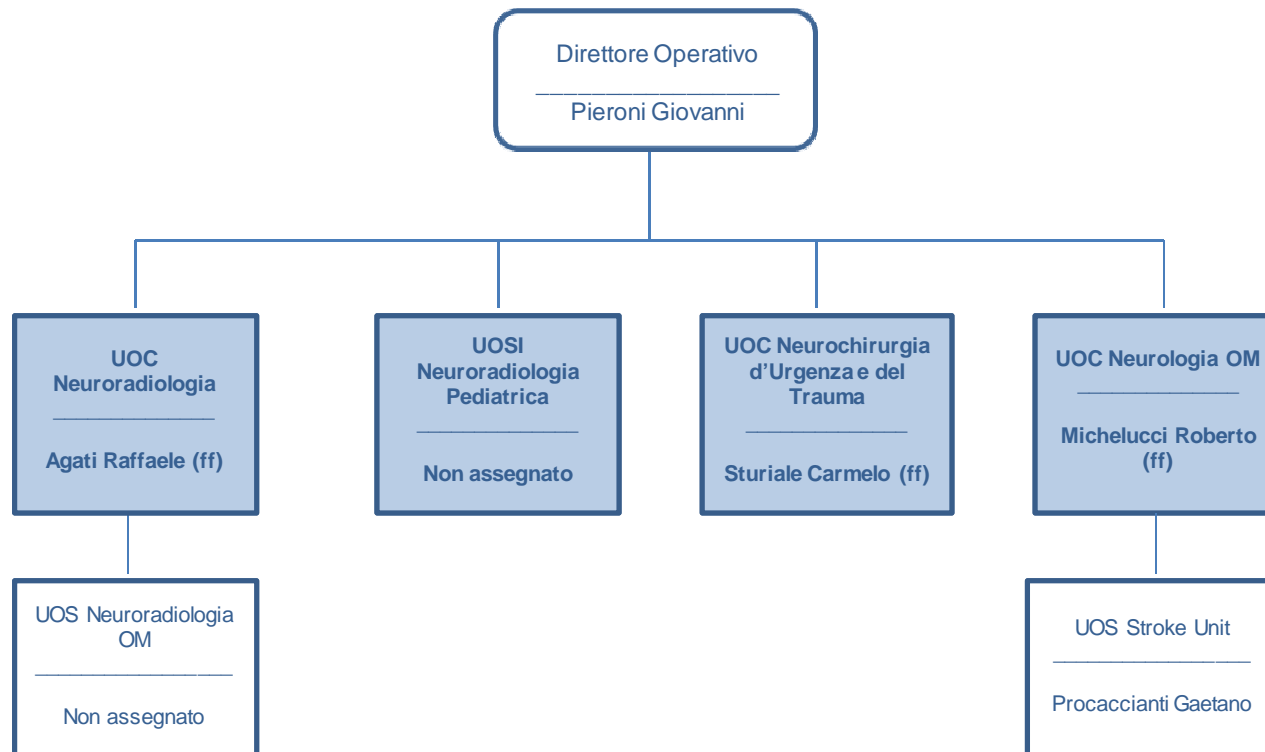


IRCCS Istituto delle Scienze Neurologiche di Bologna



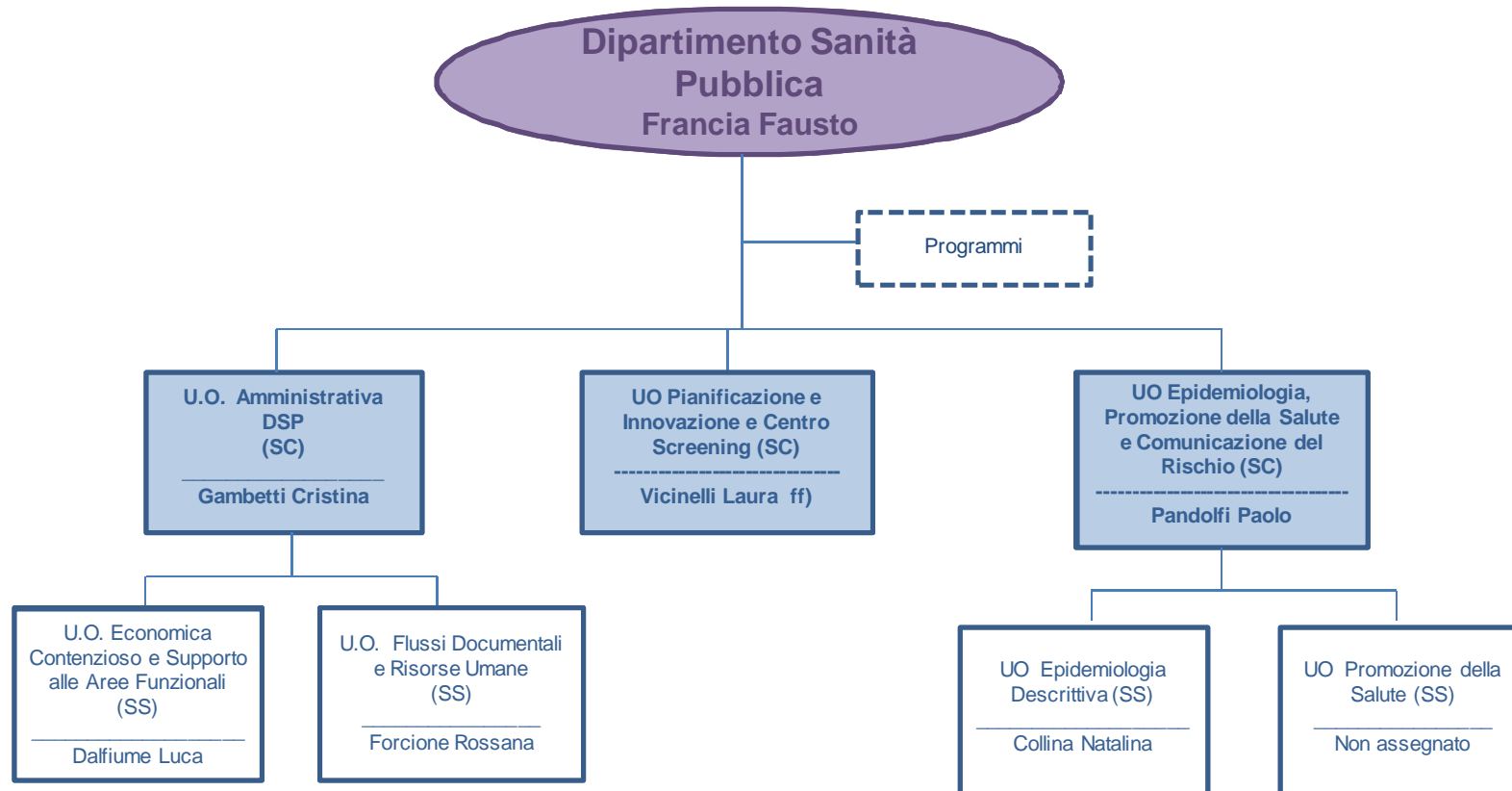


IRCCS Istituto delle Scienze Neurologiche di Bologna



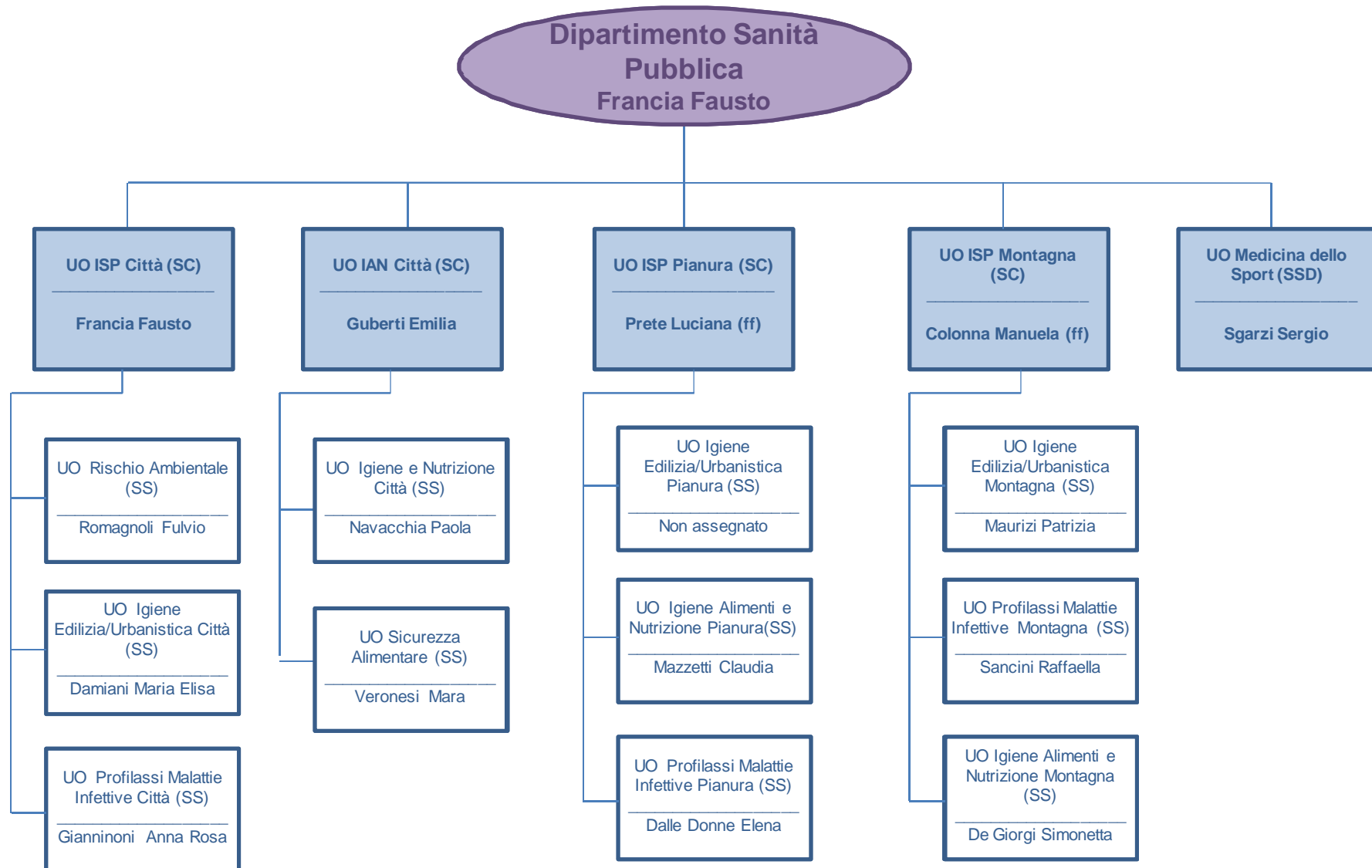


Dipartimento Sanità Pubblica



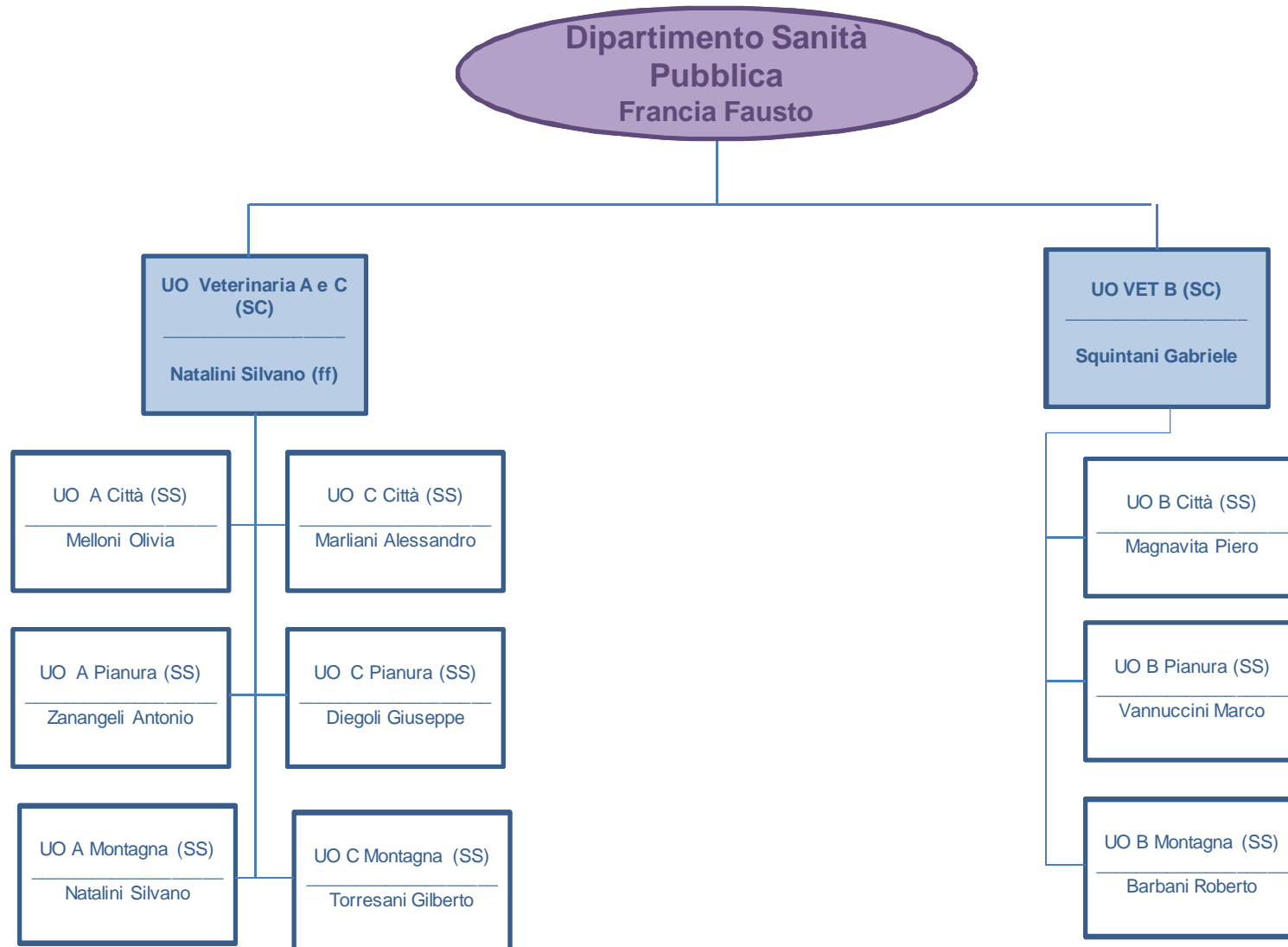


Dipartimento Sanità Pubblica



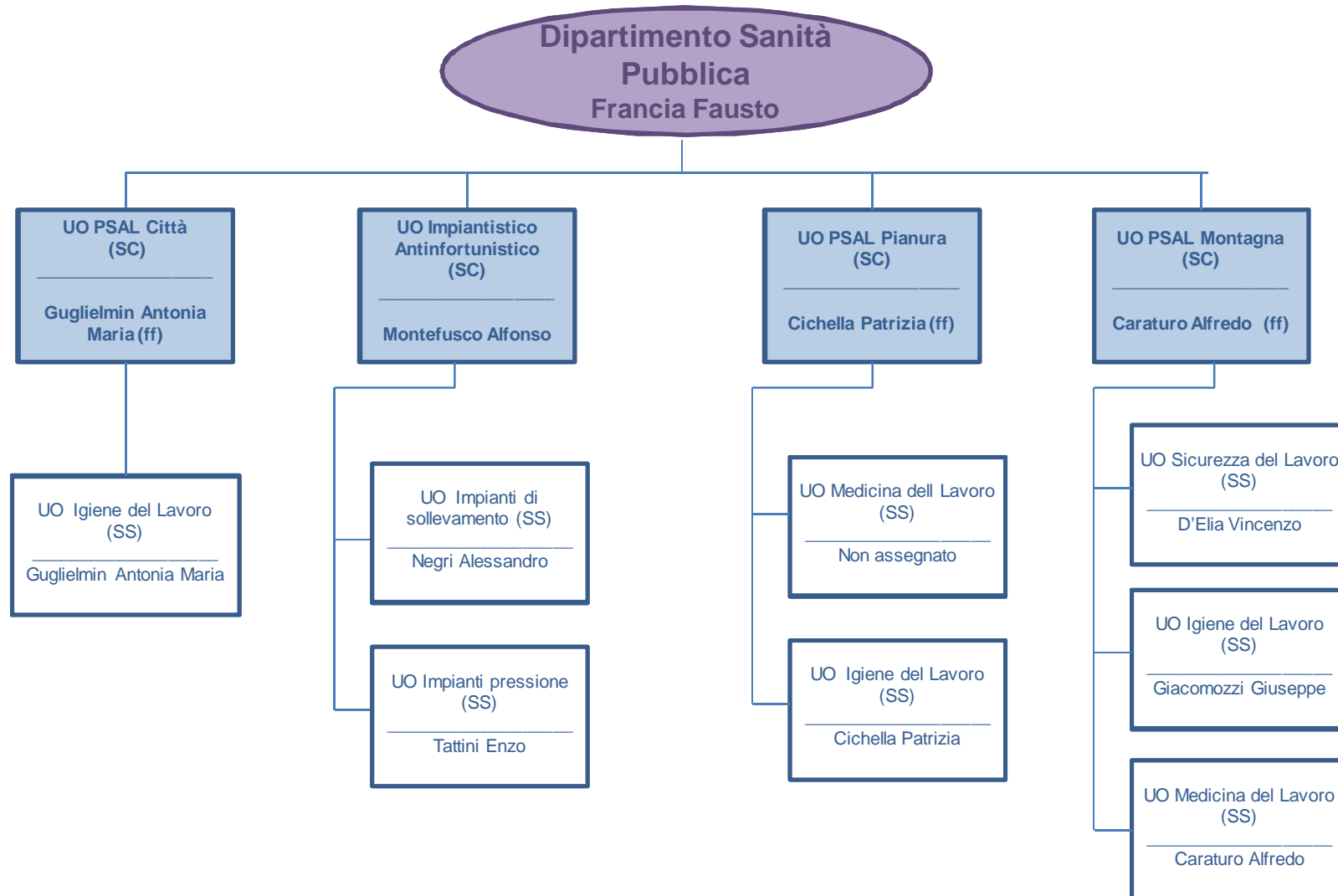


Dipartimento Sanità Pubblica

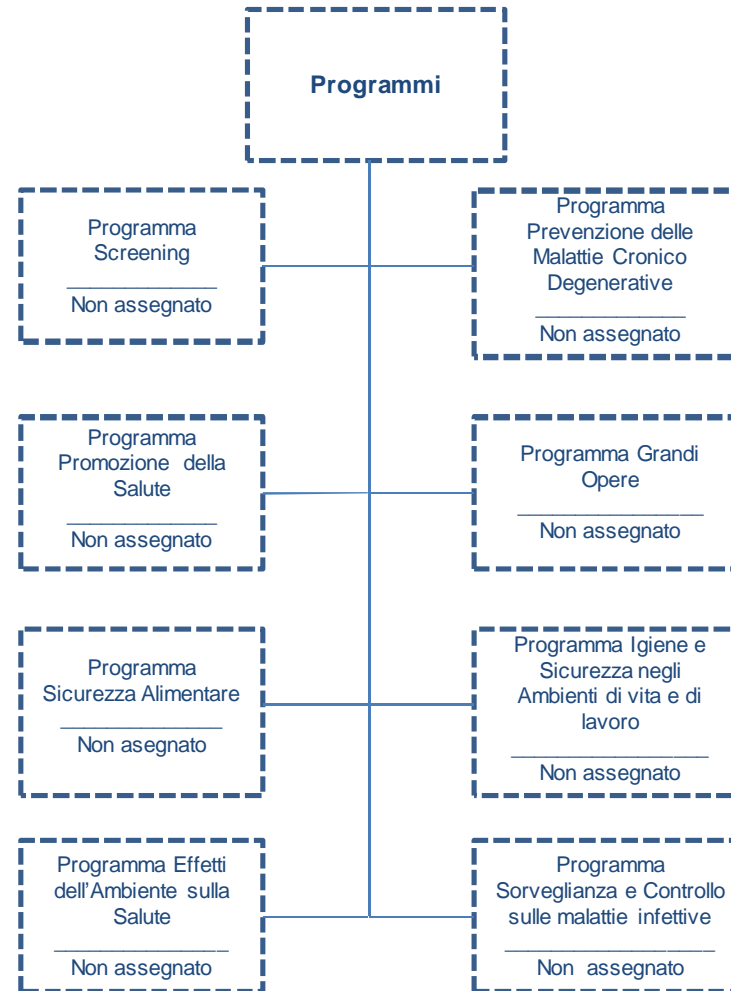




Dipartimento Sanità Pubblica

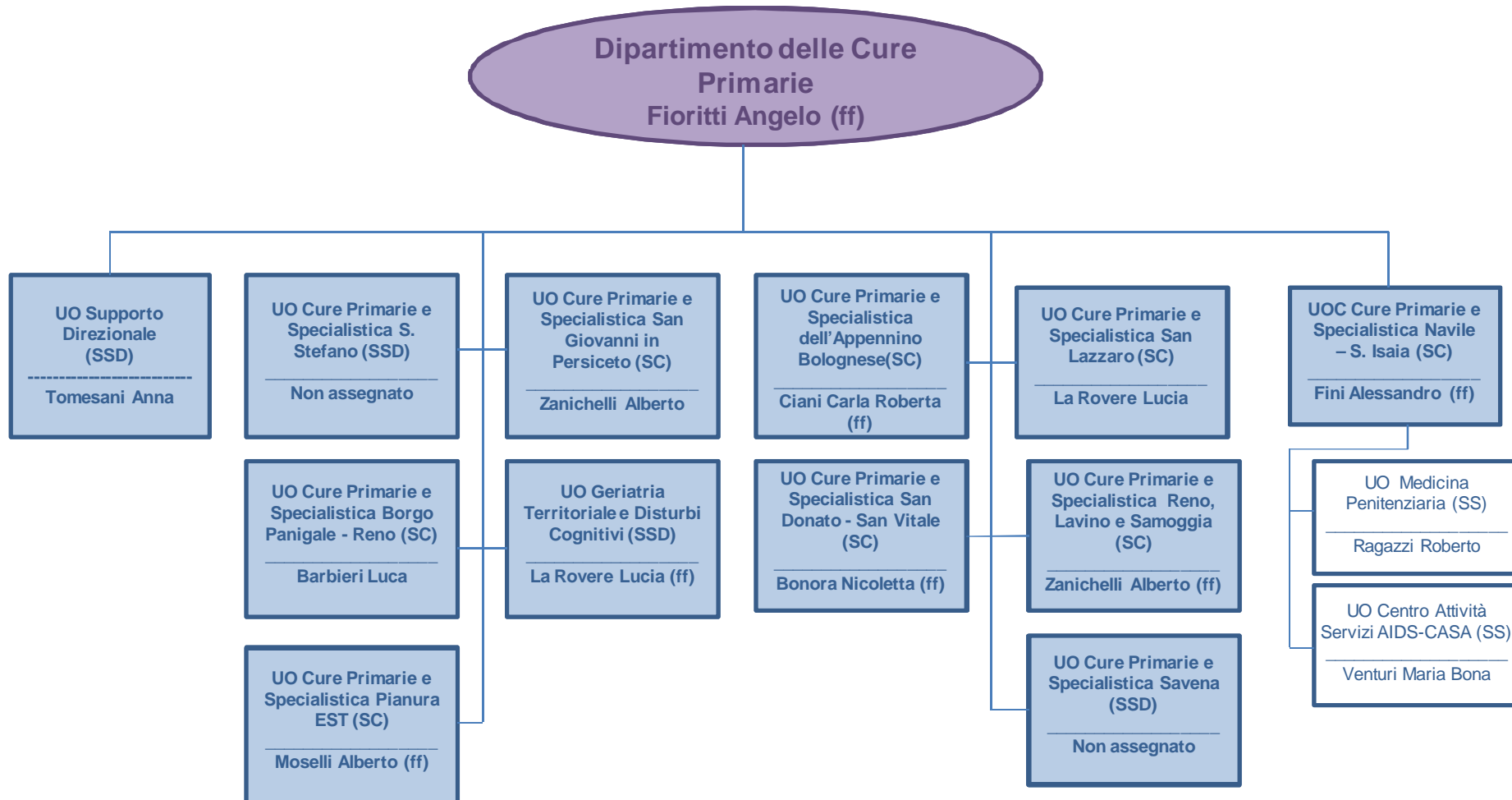


Dipartimento Sanità Pubblica



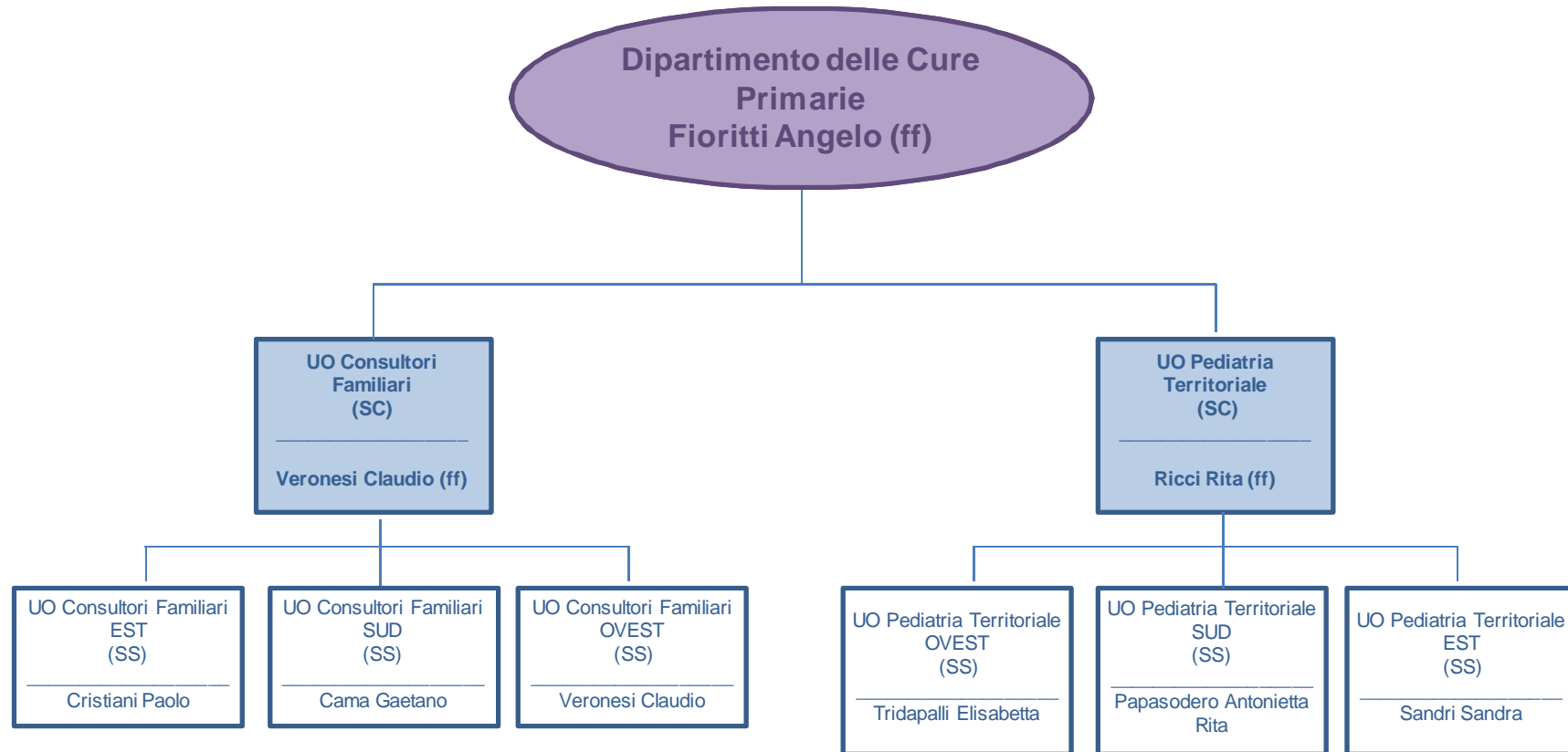


Dipartimento delle Cure Primarie



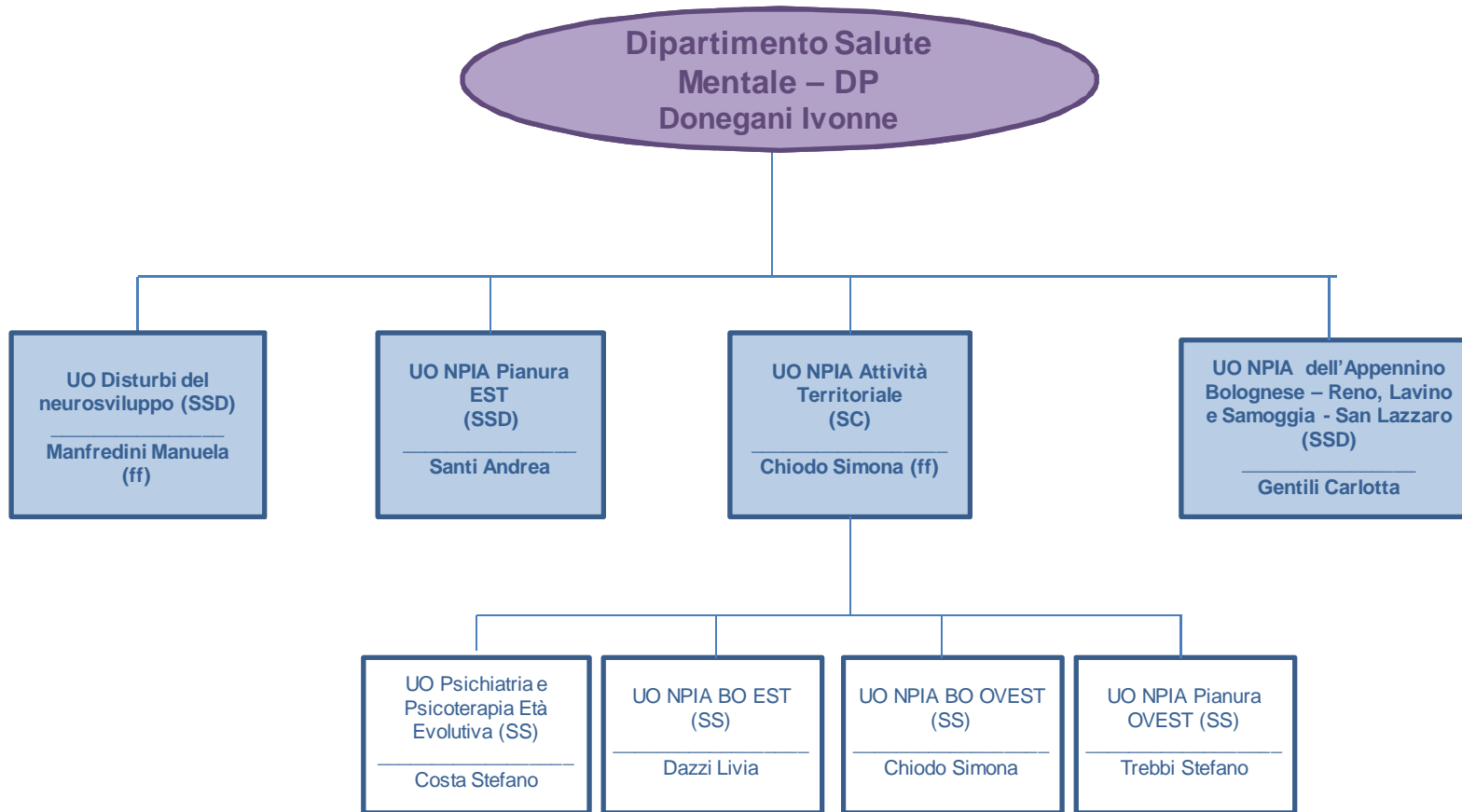


Dipartimento delle Cure Primarie



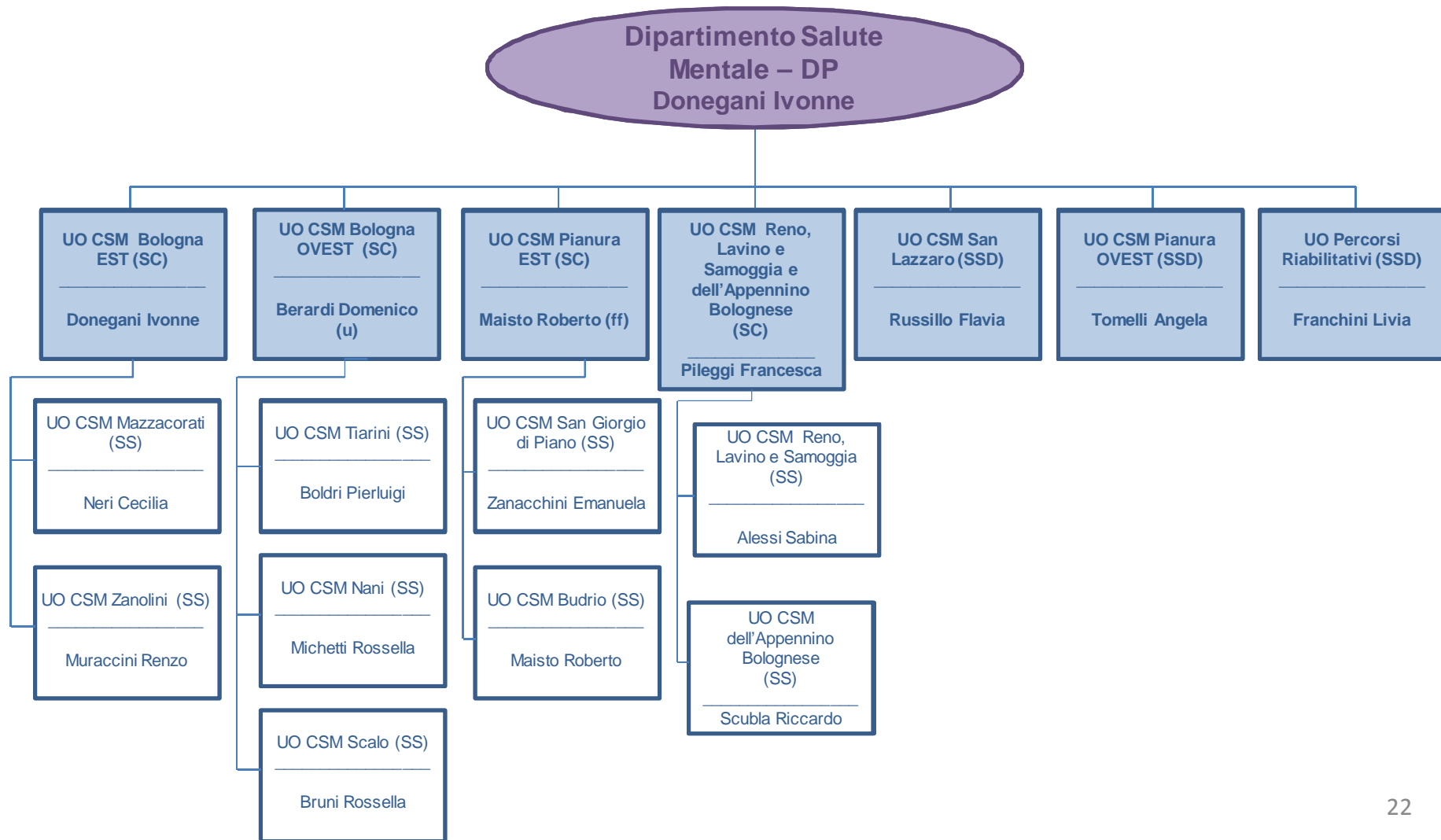


Dipartimento Salute Mentale – Dipendenze Patologiche



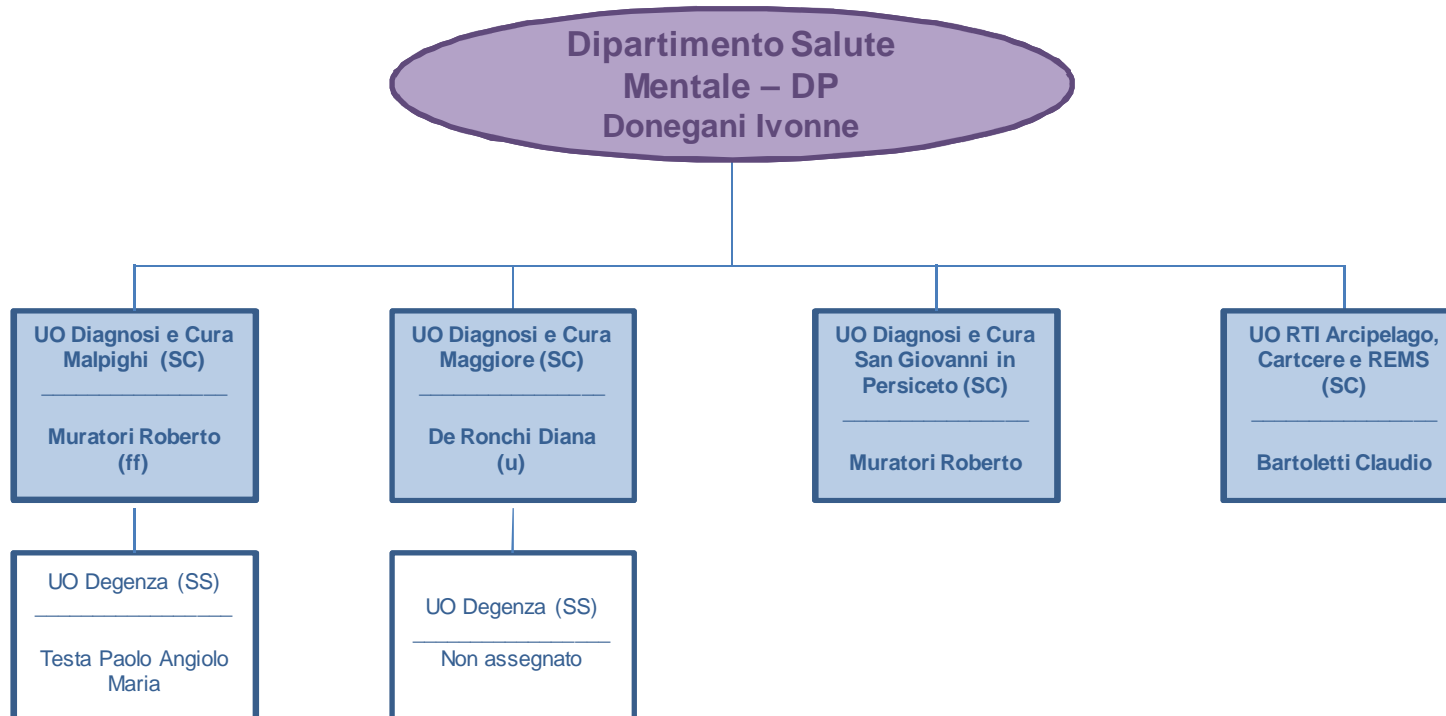


Dipartimento Salute Mentale – Dipendenze Patologiche

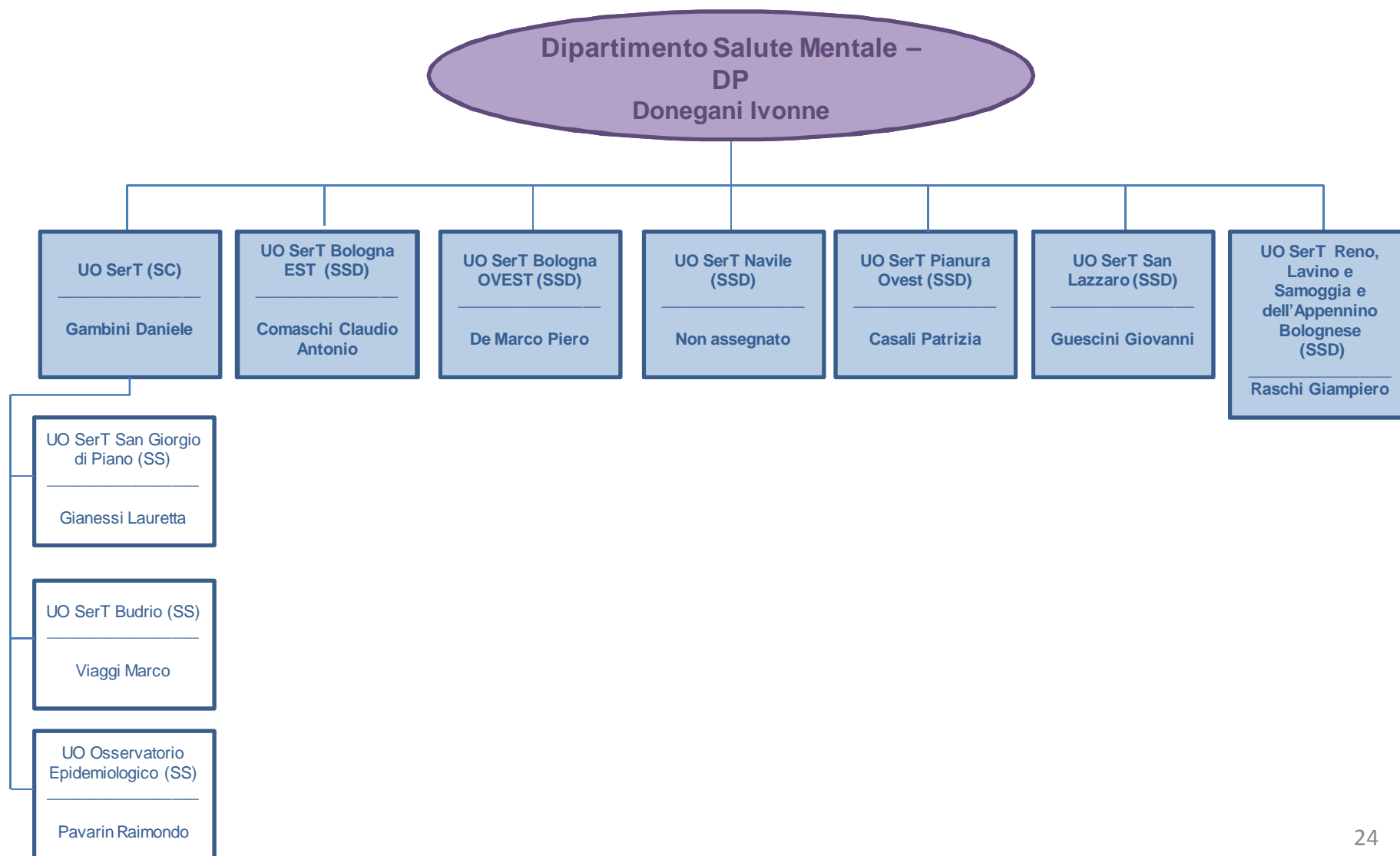




Dipartimento Salute Mentale – Dipendenze Patologiche

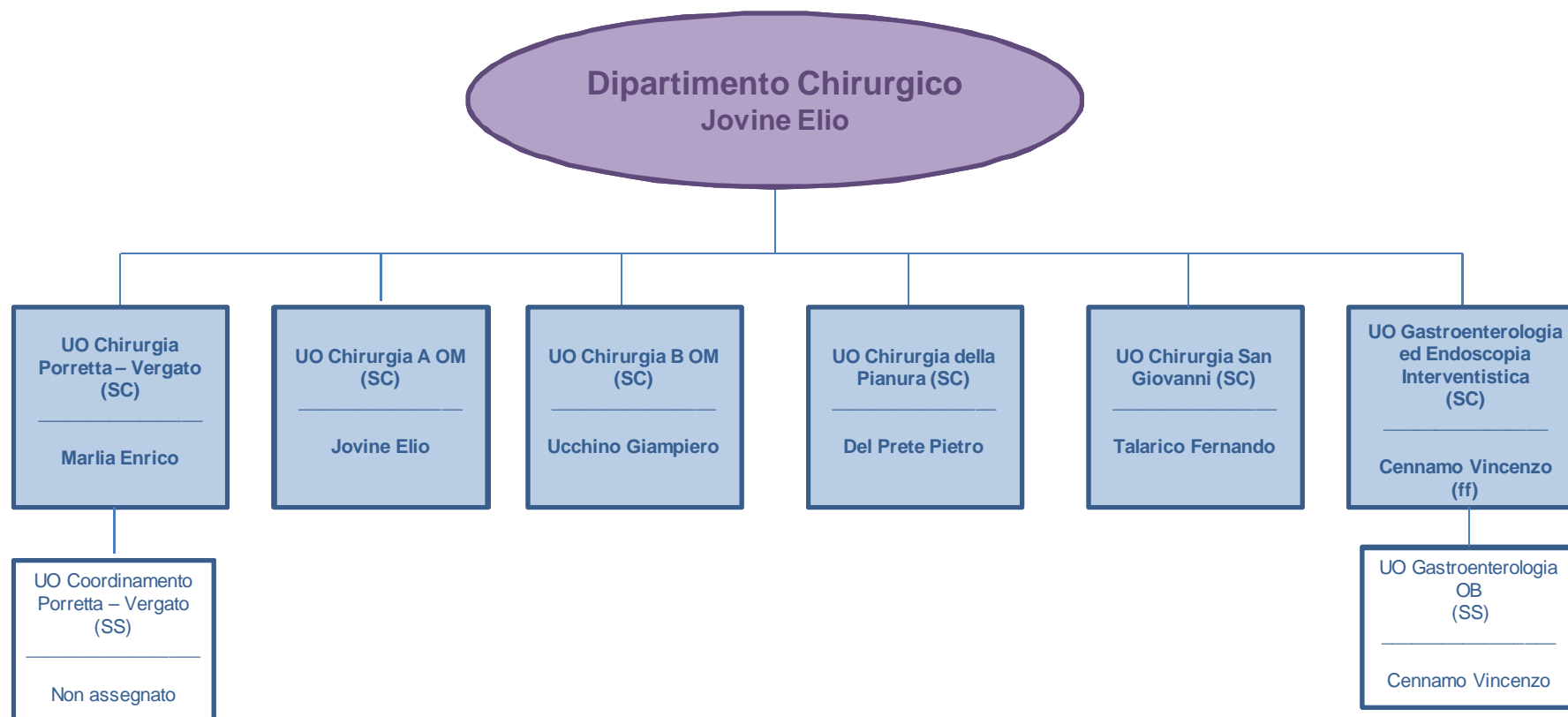


Dipartimento Salute Mentale – Dipendenze Patologiche



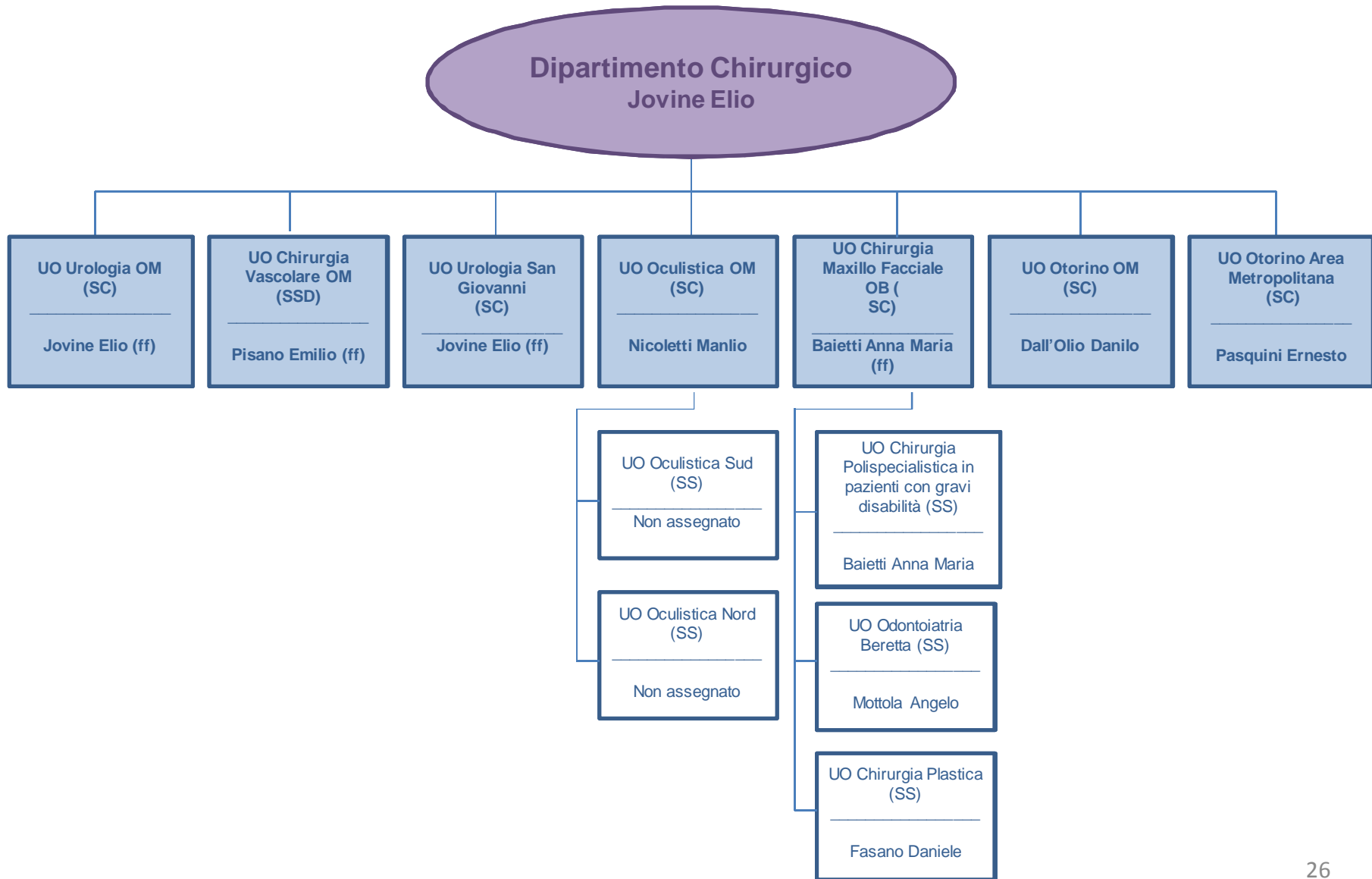


Dipartimento Chirurgico



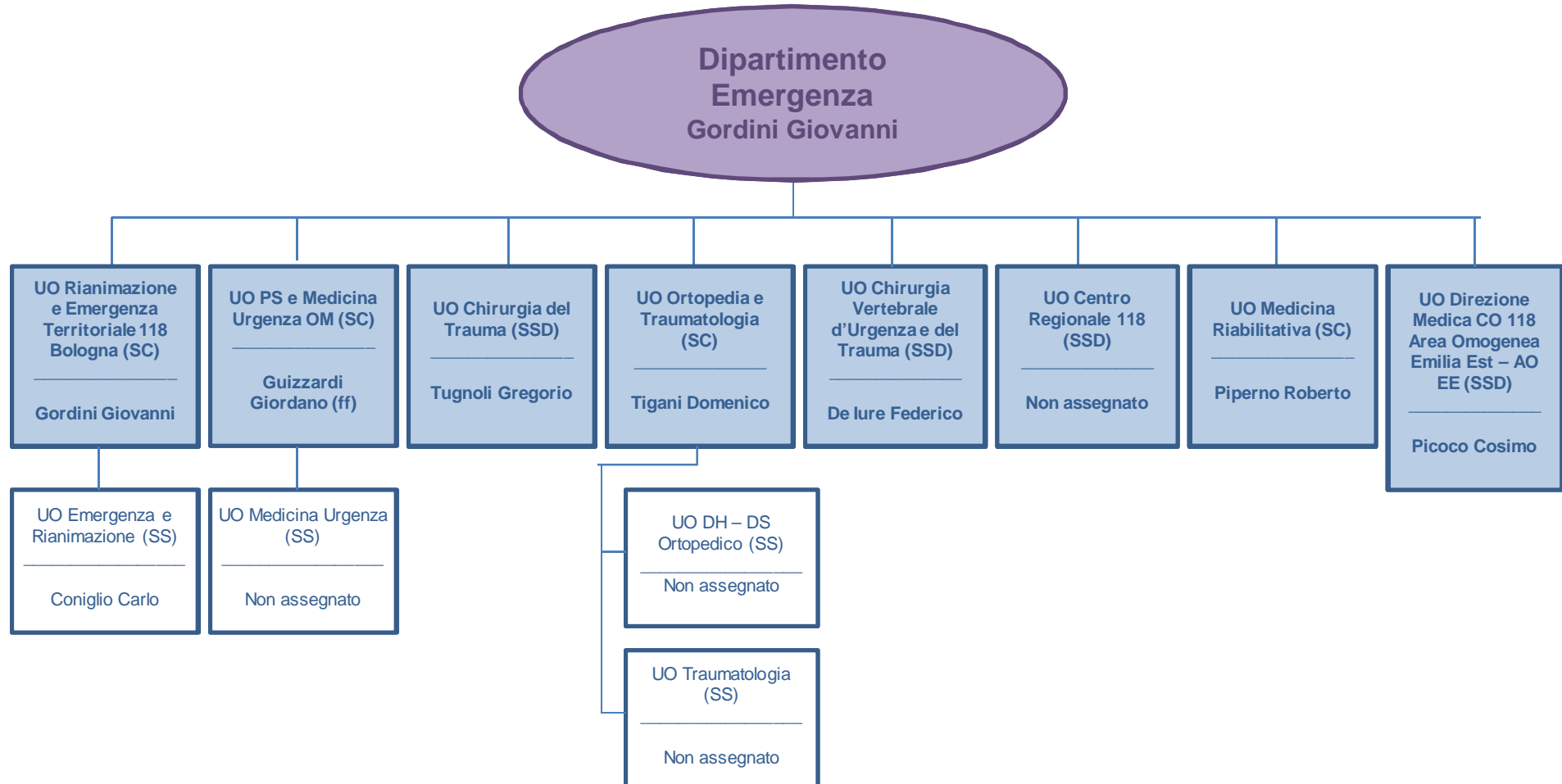


Dipartimento Chirurgico



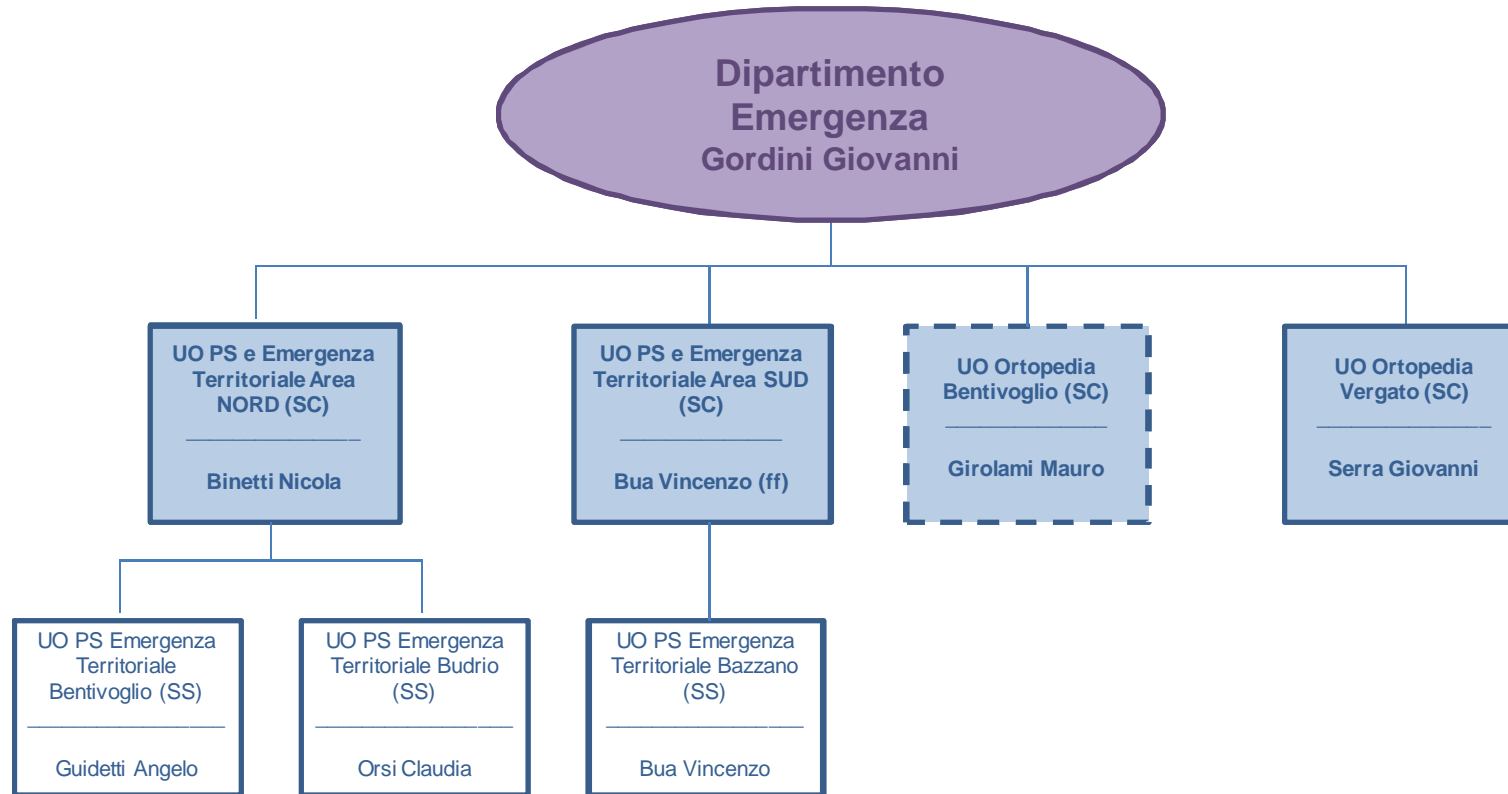


Dipartimento Emergenza



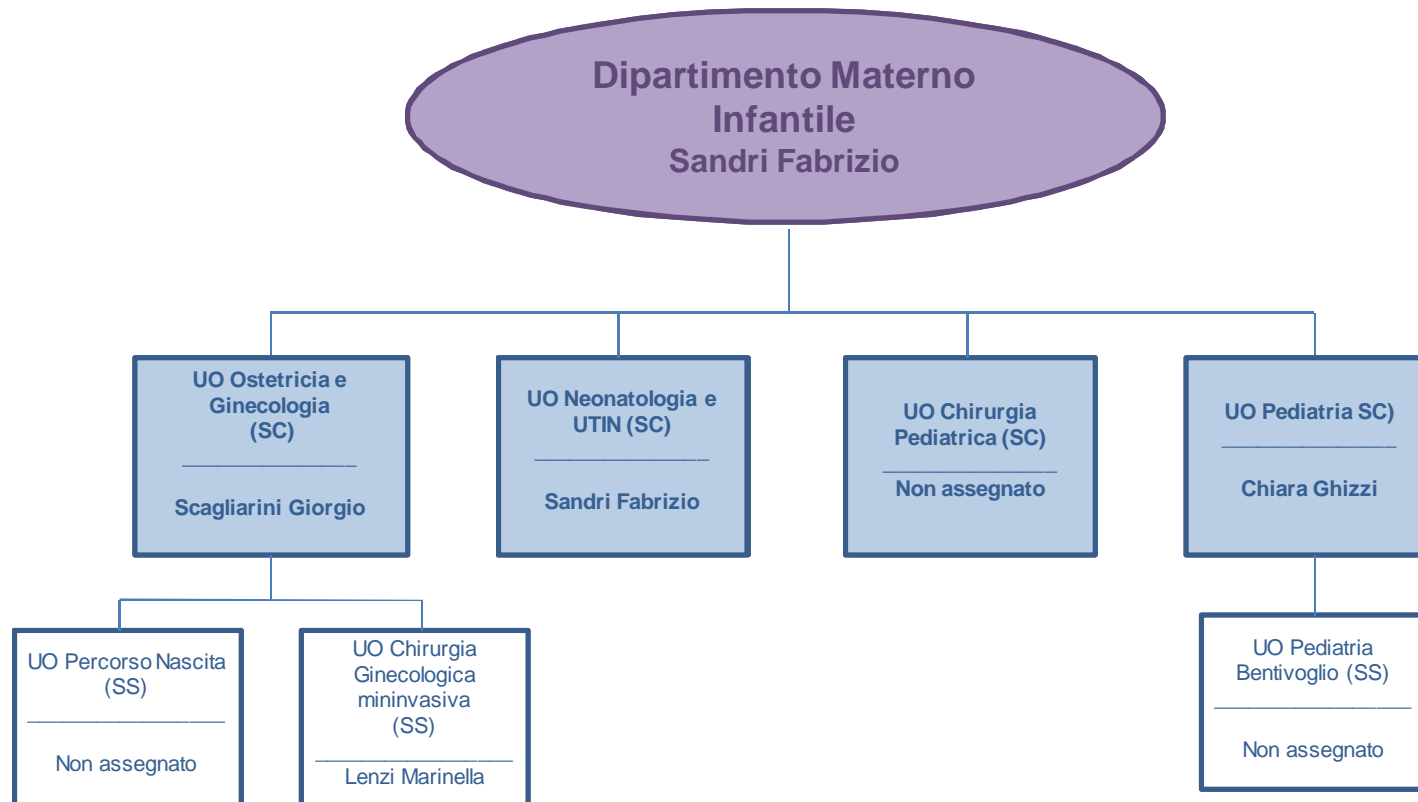


Dipartimento Emergenza



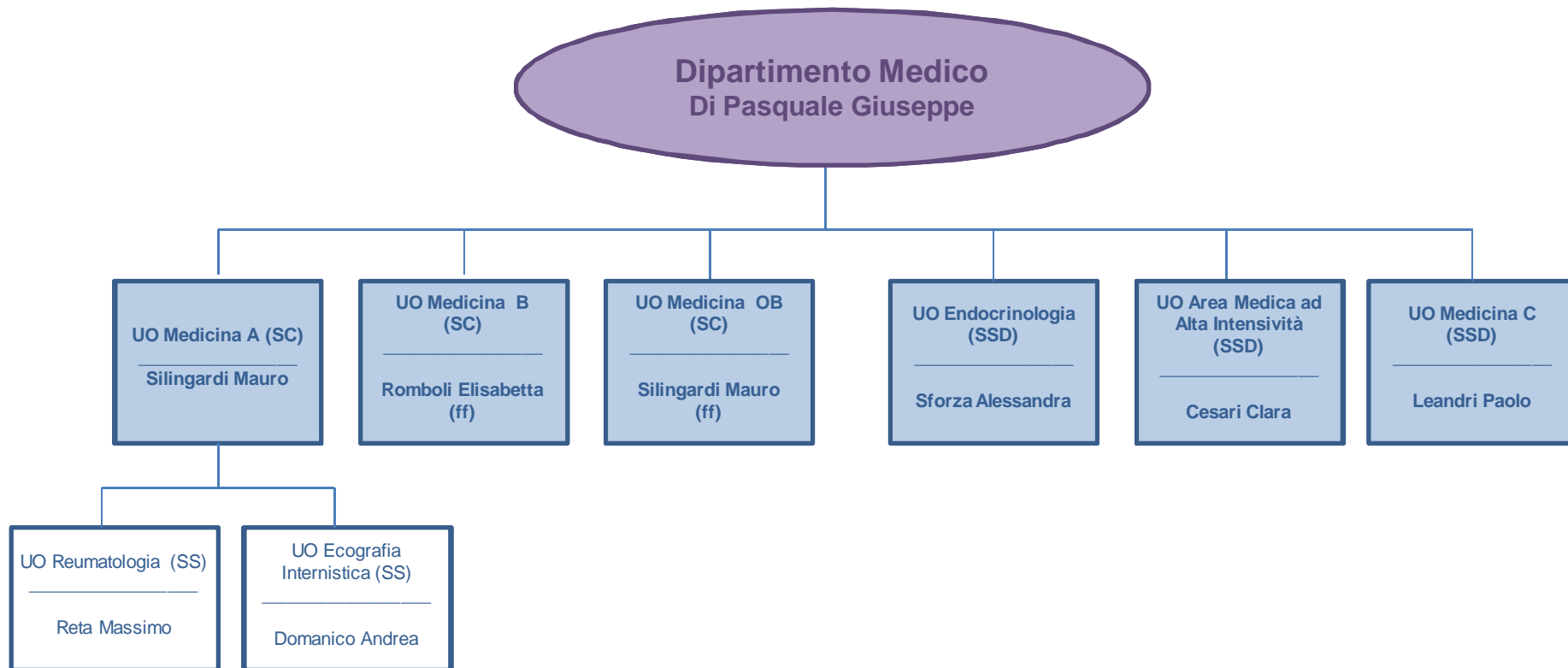


Dipartimento Materno Infantile



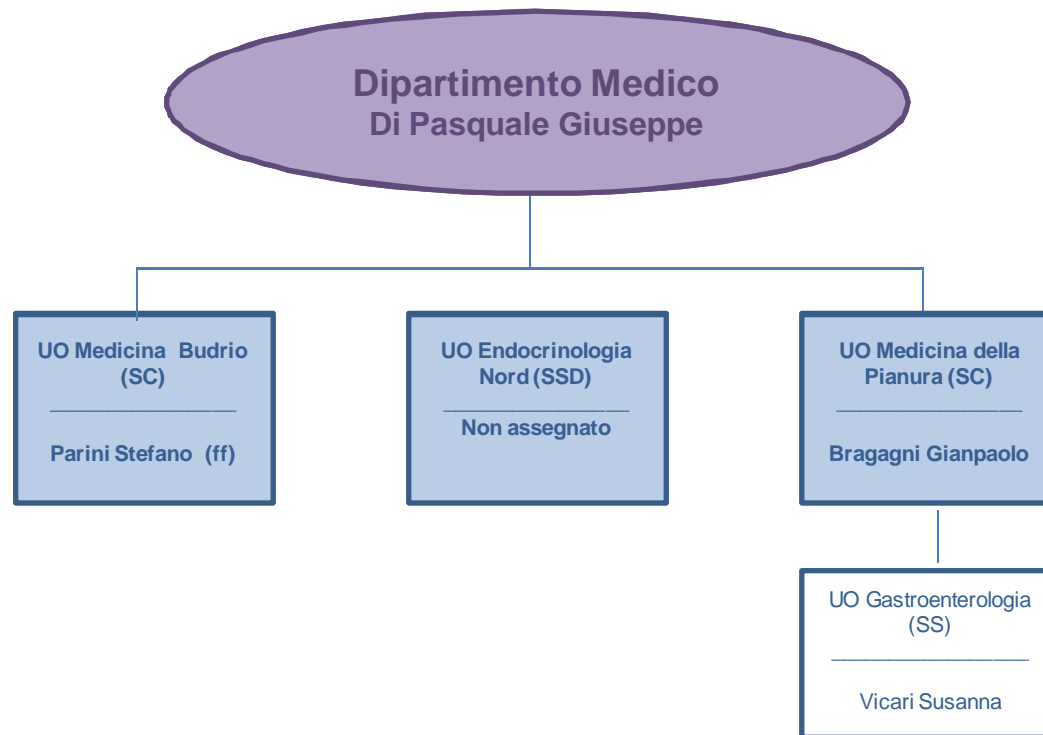


Dipartimento Medico



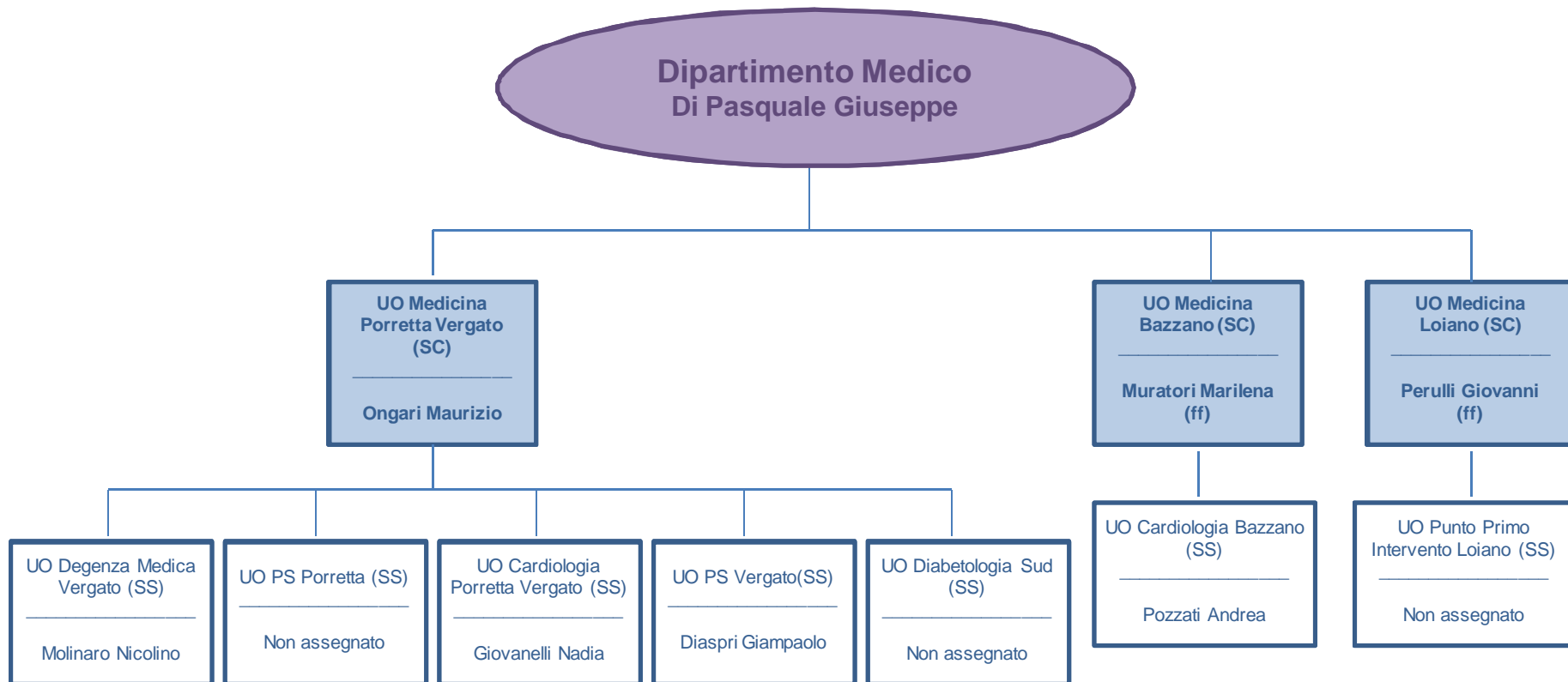


Dipartimento Medico



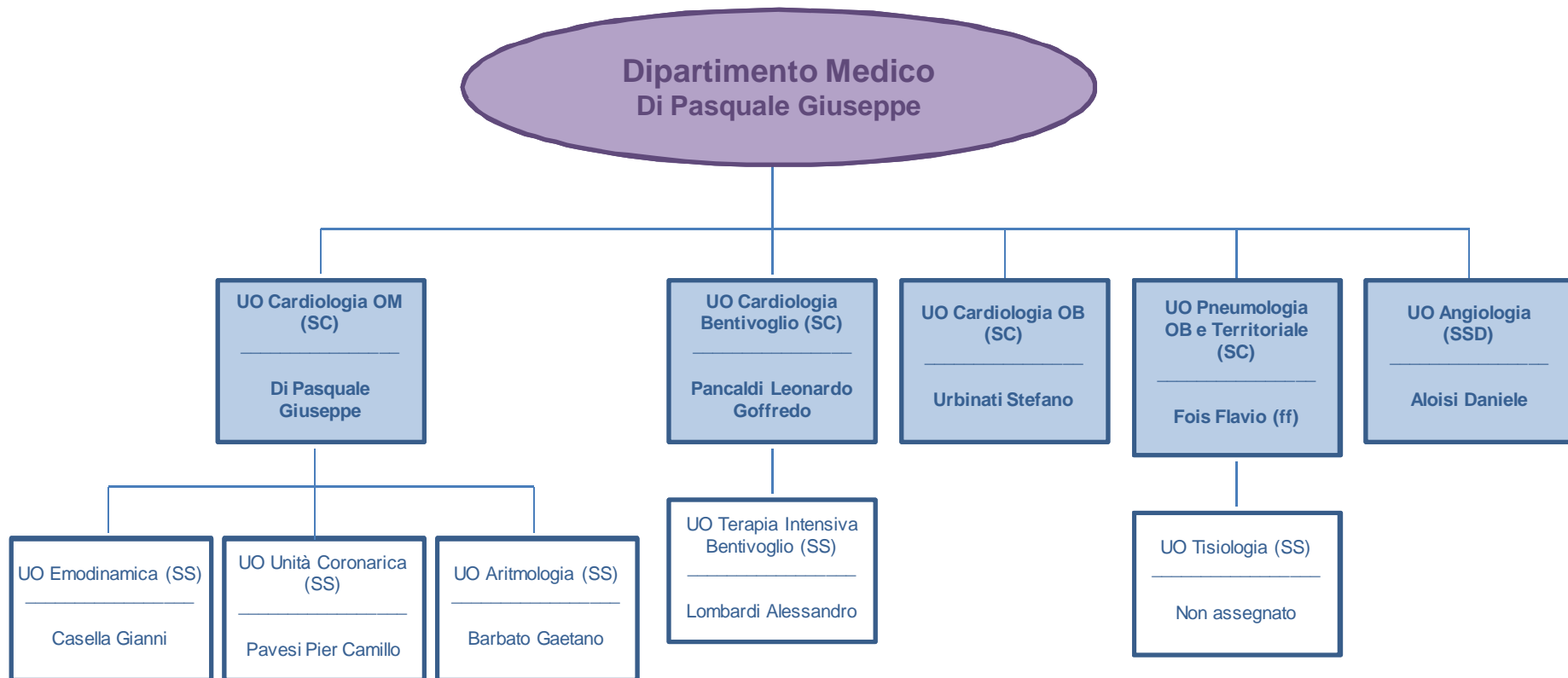


Dipartimento Medico



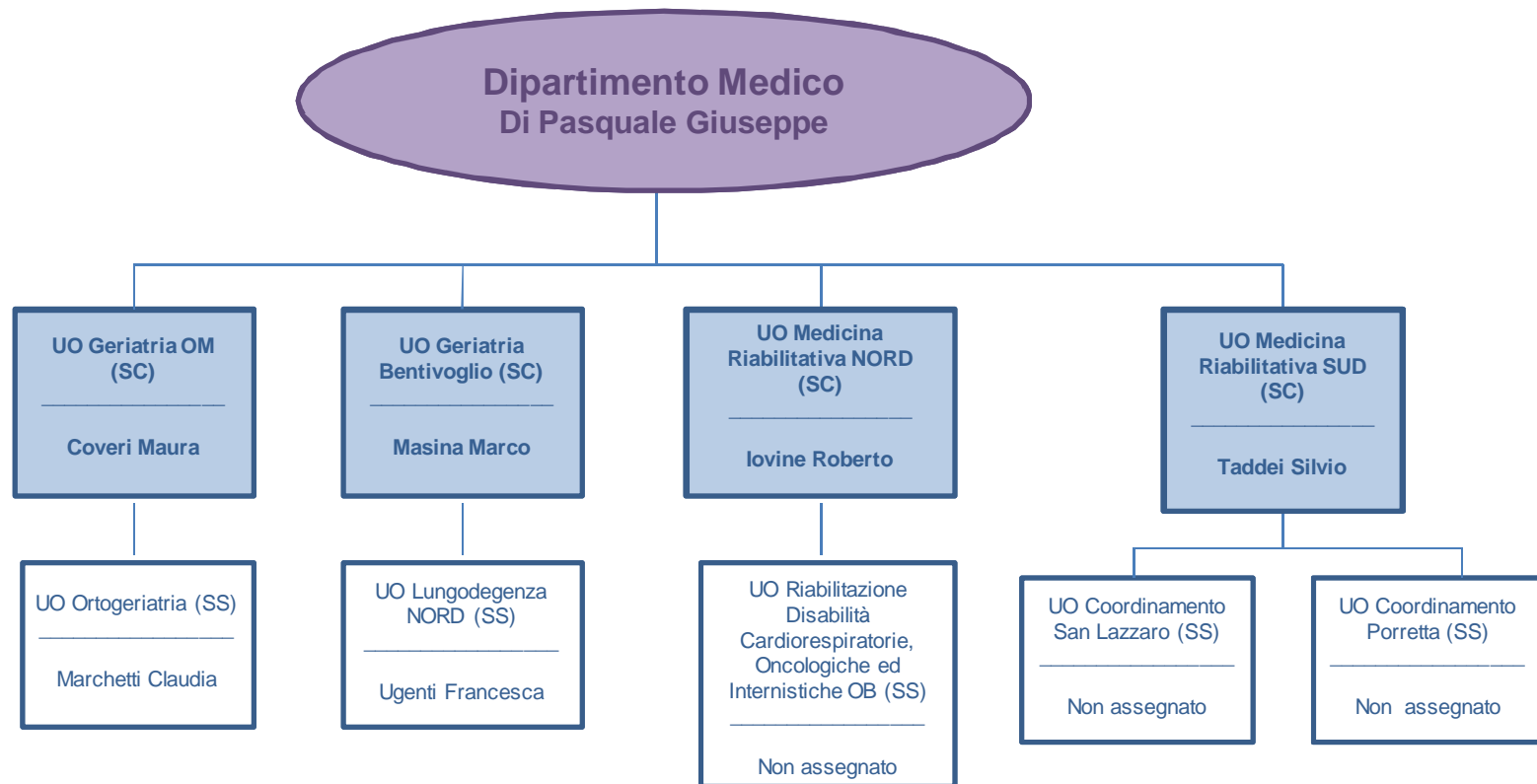


Dipartimento Medico



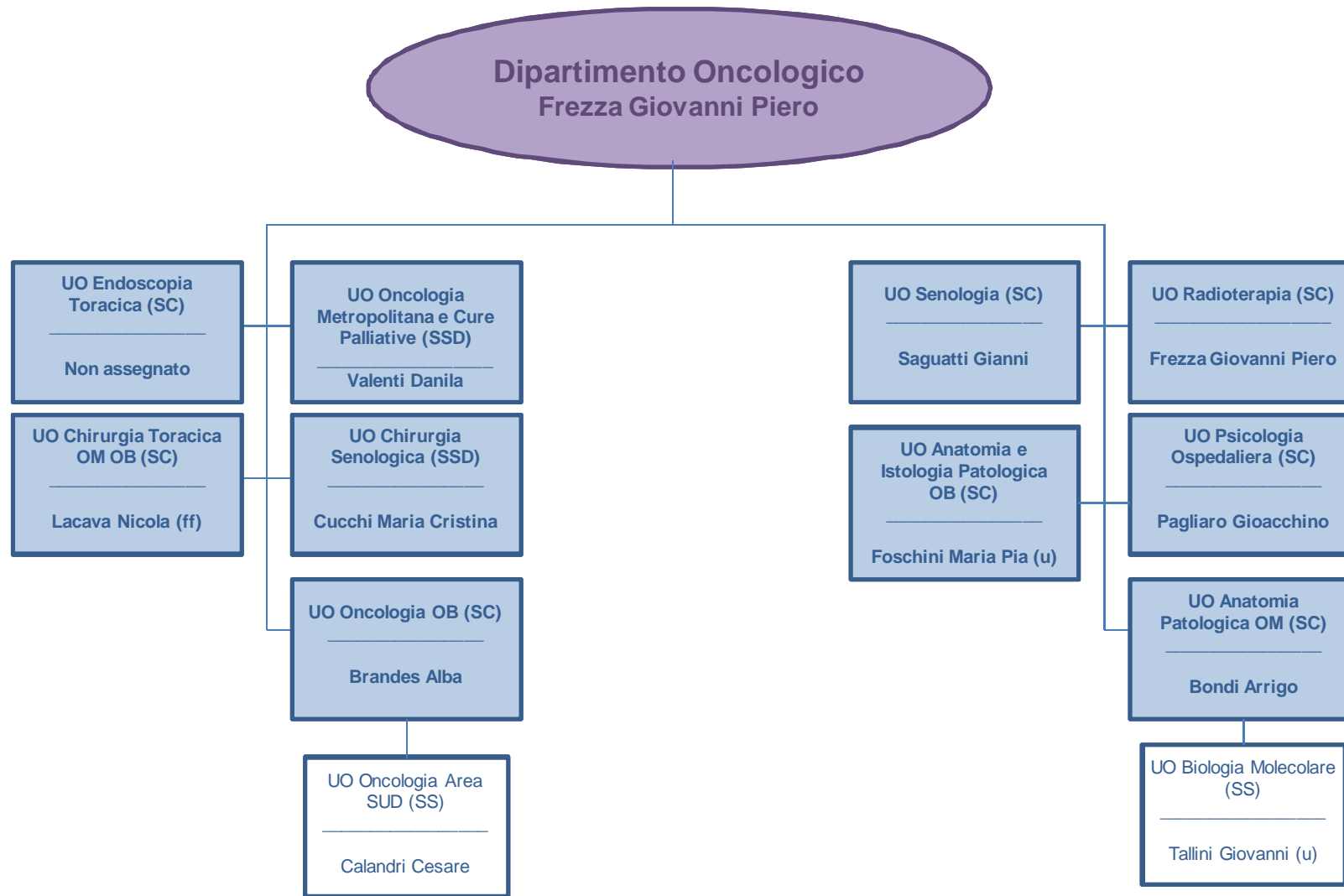


Dipartimento Medico



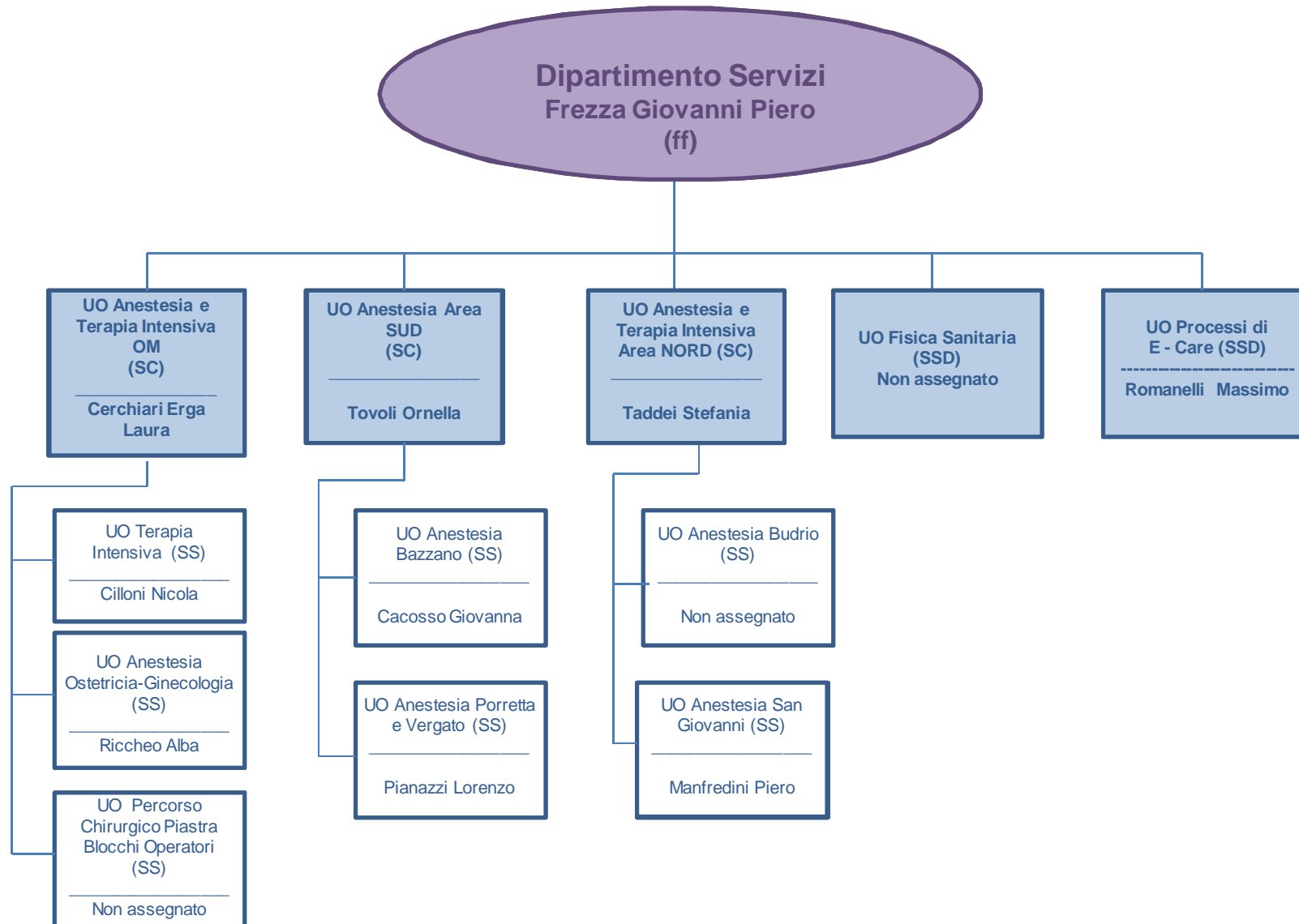


Dipartimento Oncologico



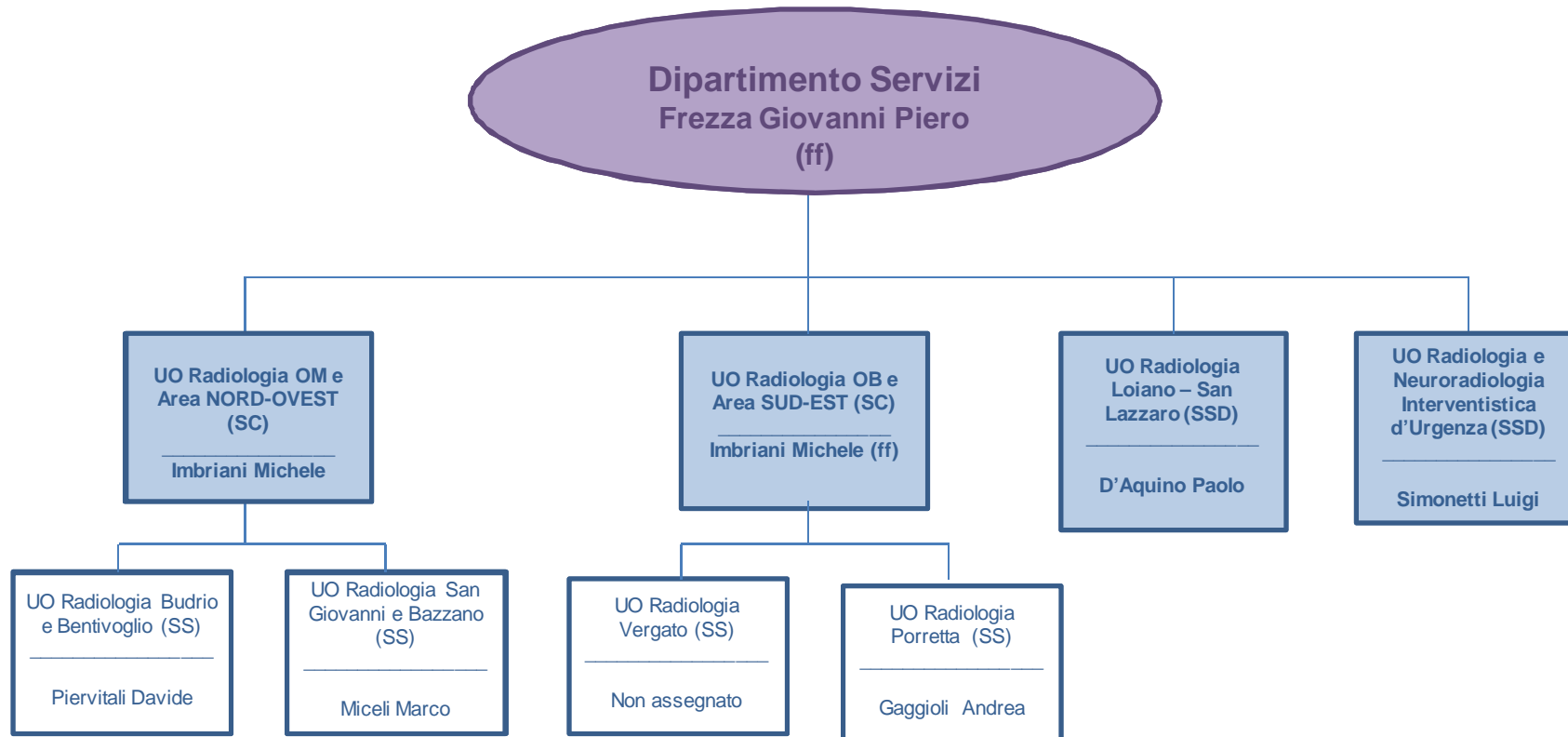


Dipartimento Servizi



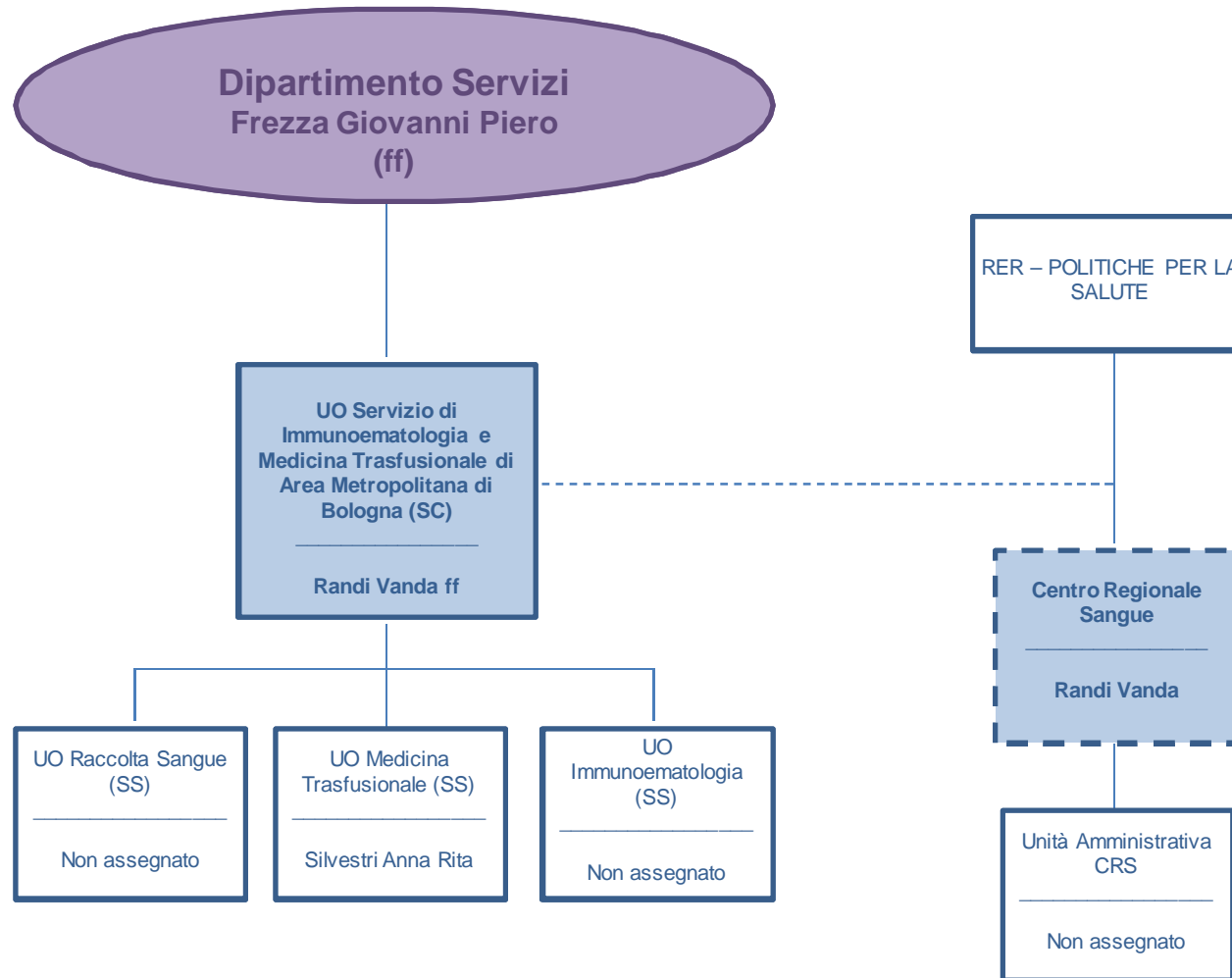


Dipartimento Servizi



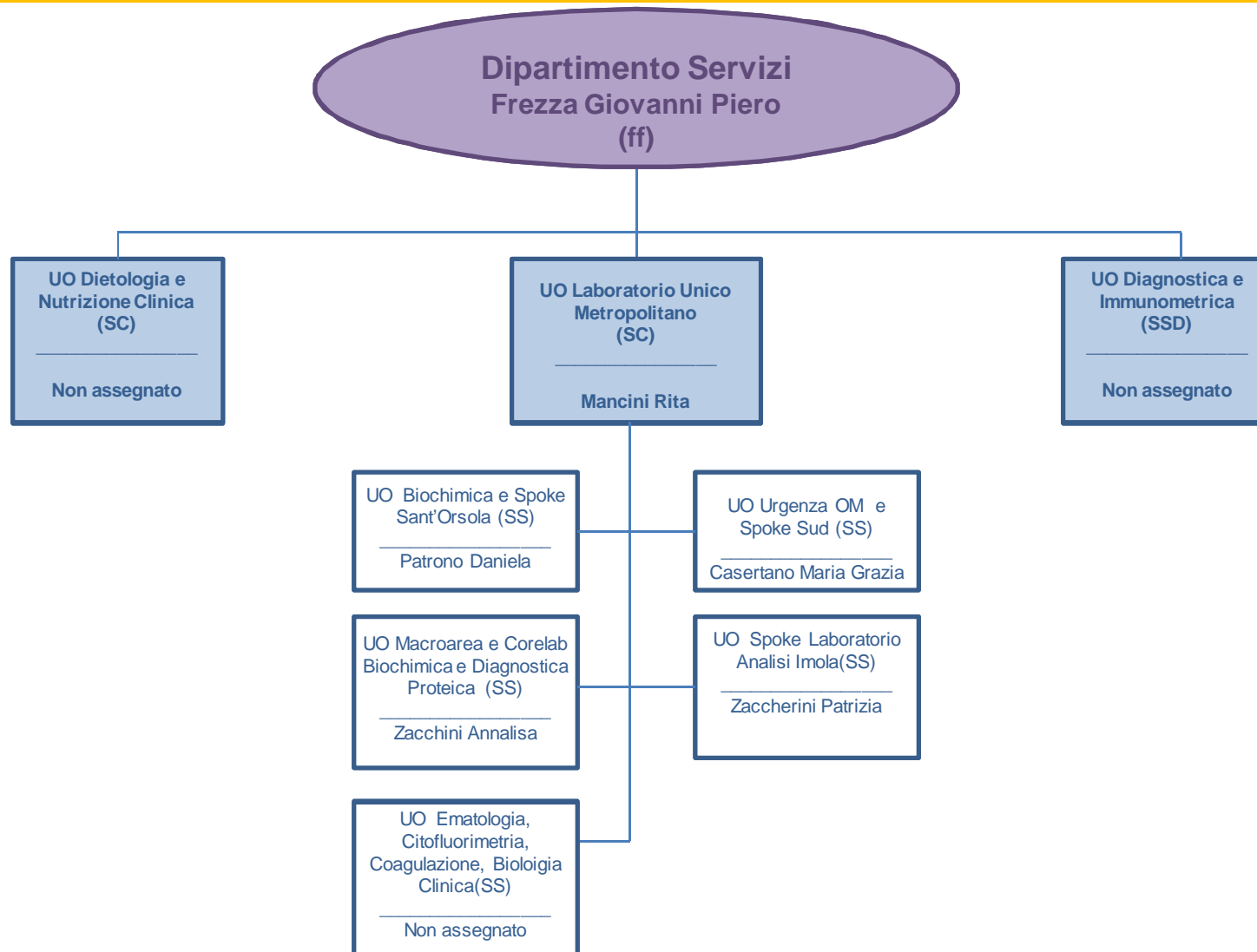


Dipartimento Servizi



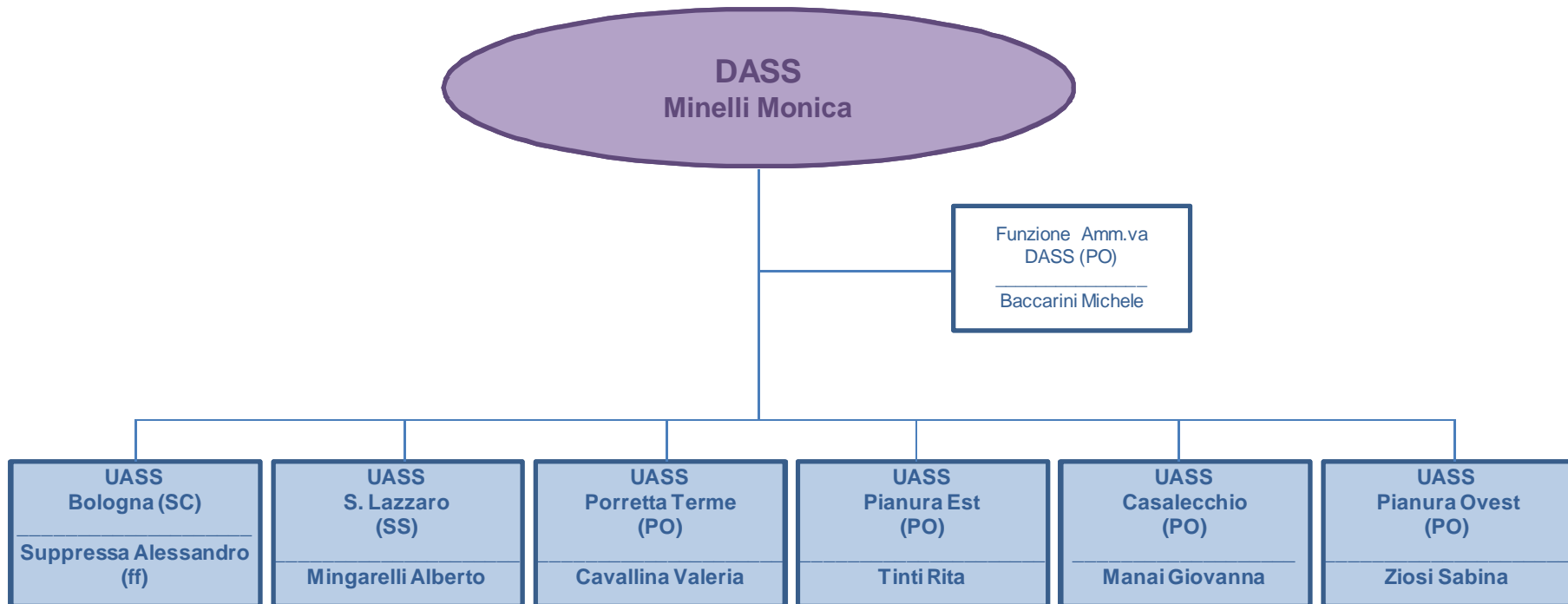


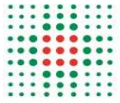
Dipartimento Servizi



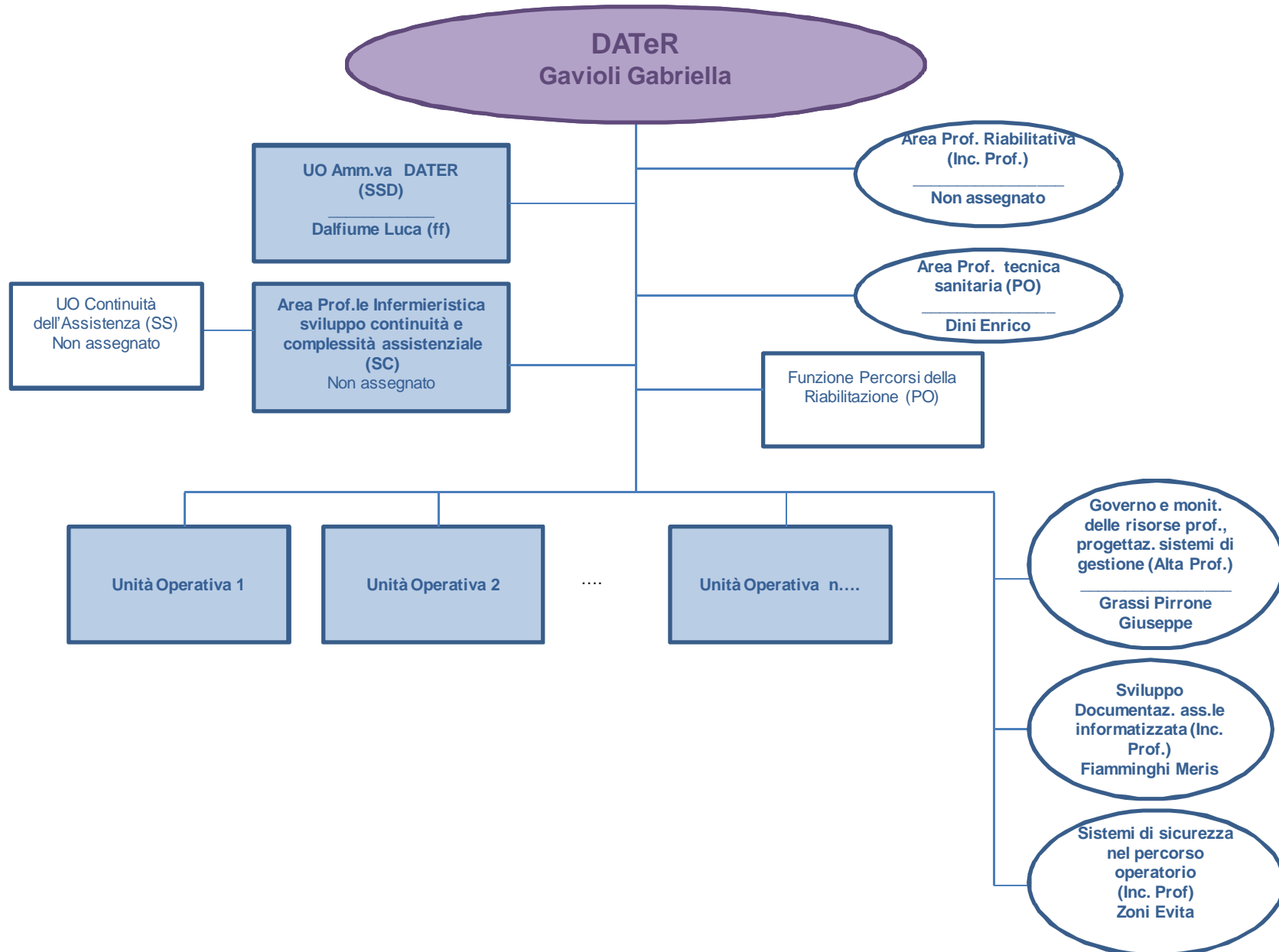


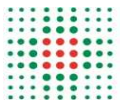
DASS – Direzione Attività Socio – Sanitarie



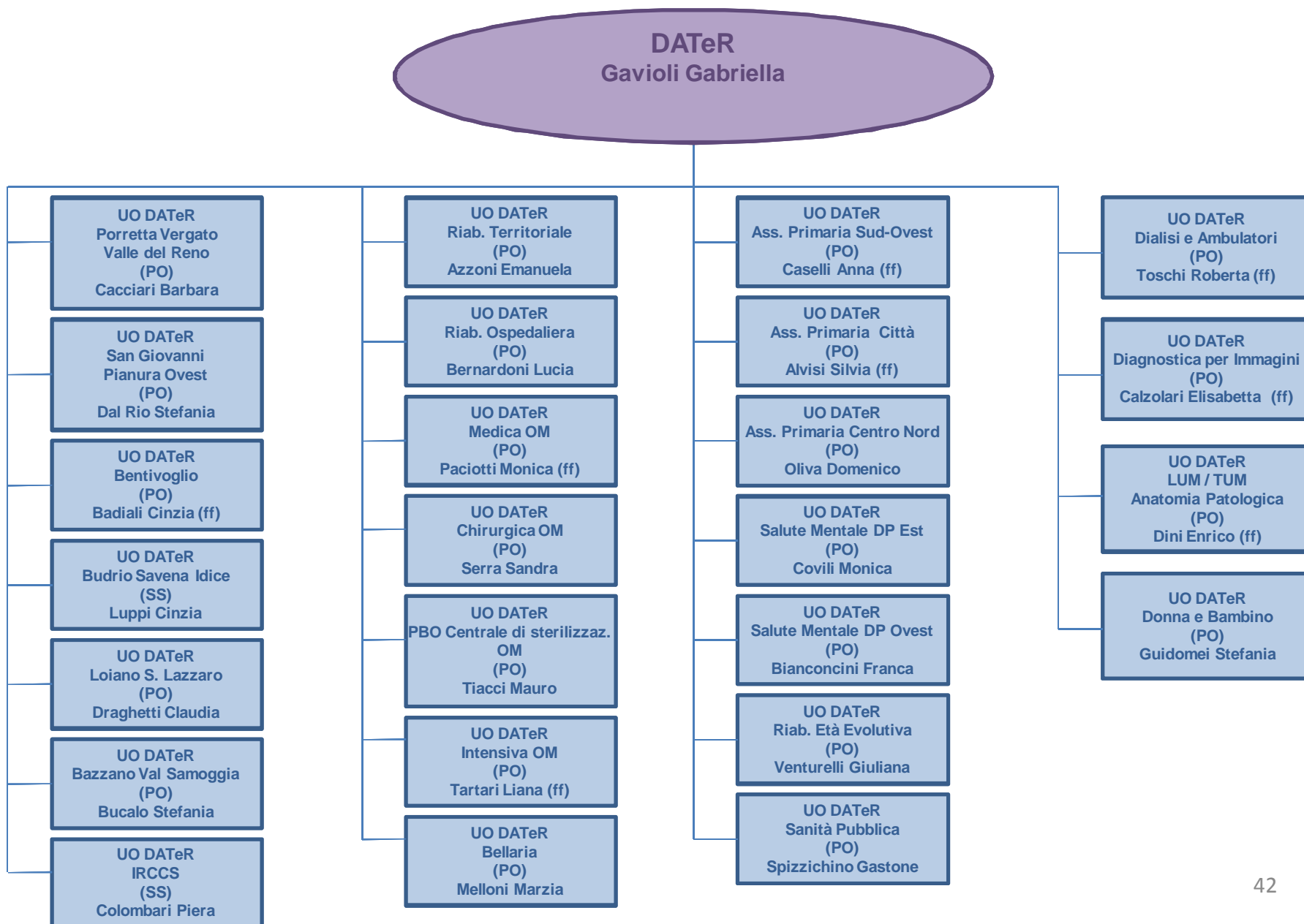


DATEr - Direzione Assistenziale Tecnica e Riabilitativa



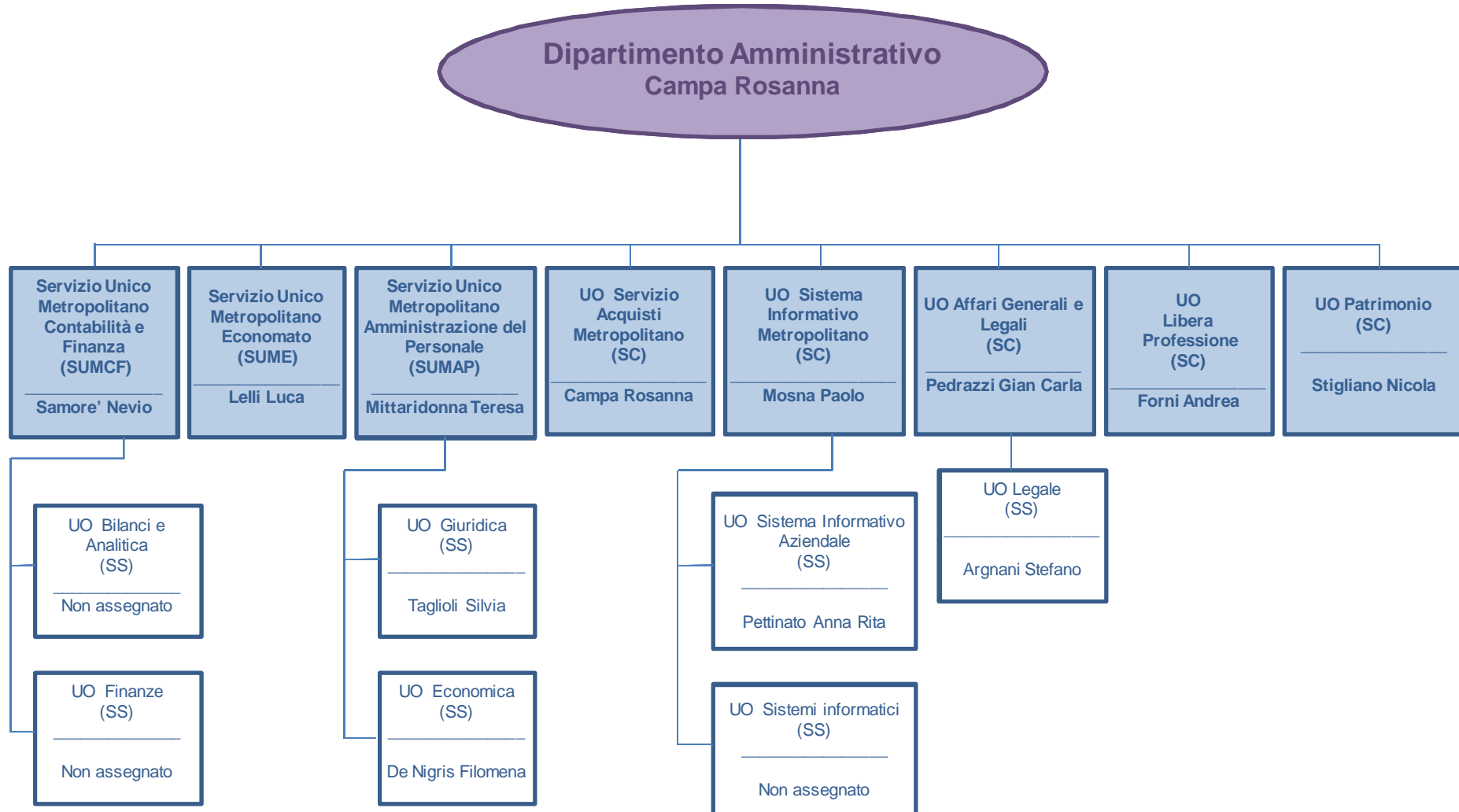


DATEr - Direzione Assistenziale Tecnica e Riabilitativa



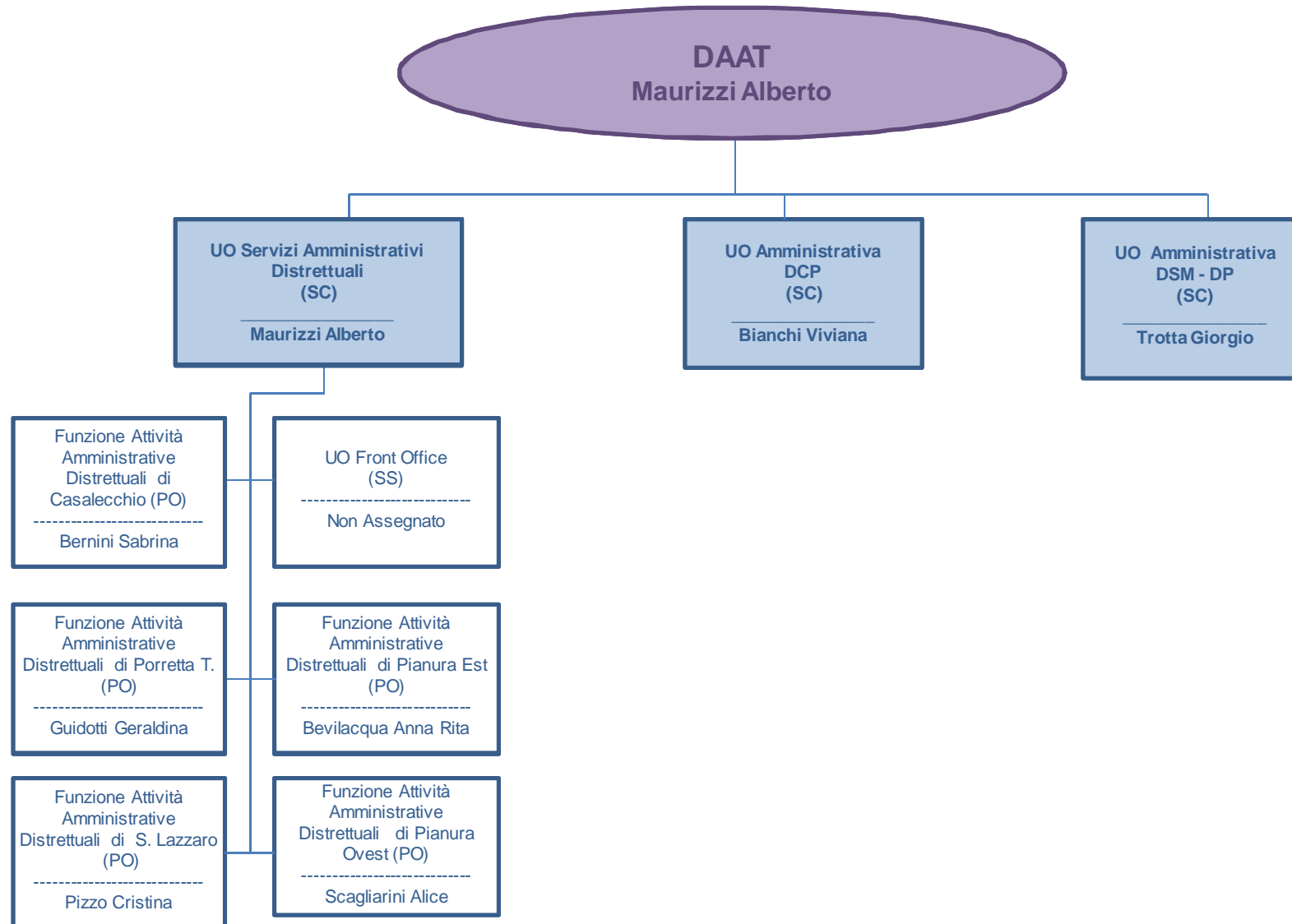


Dipartimento Amministrativo



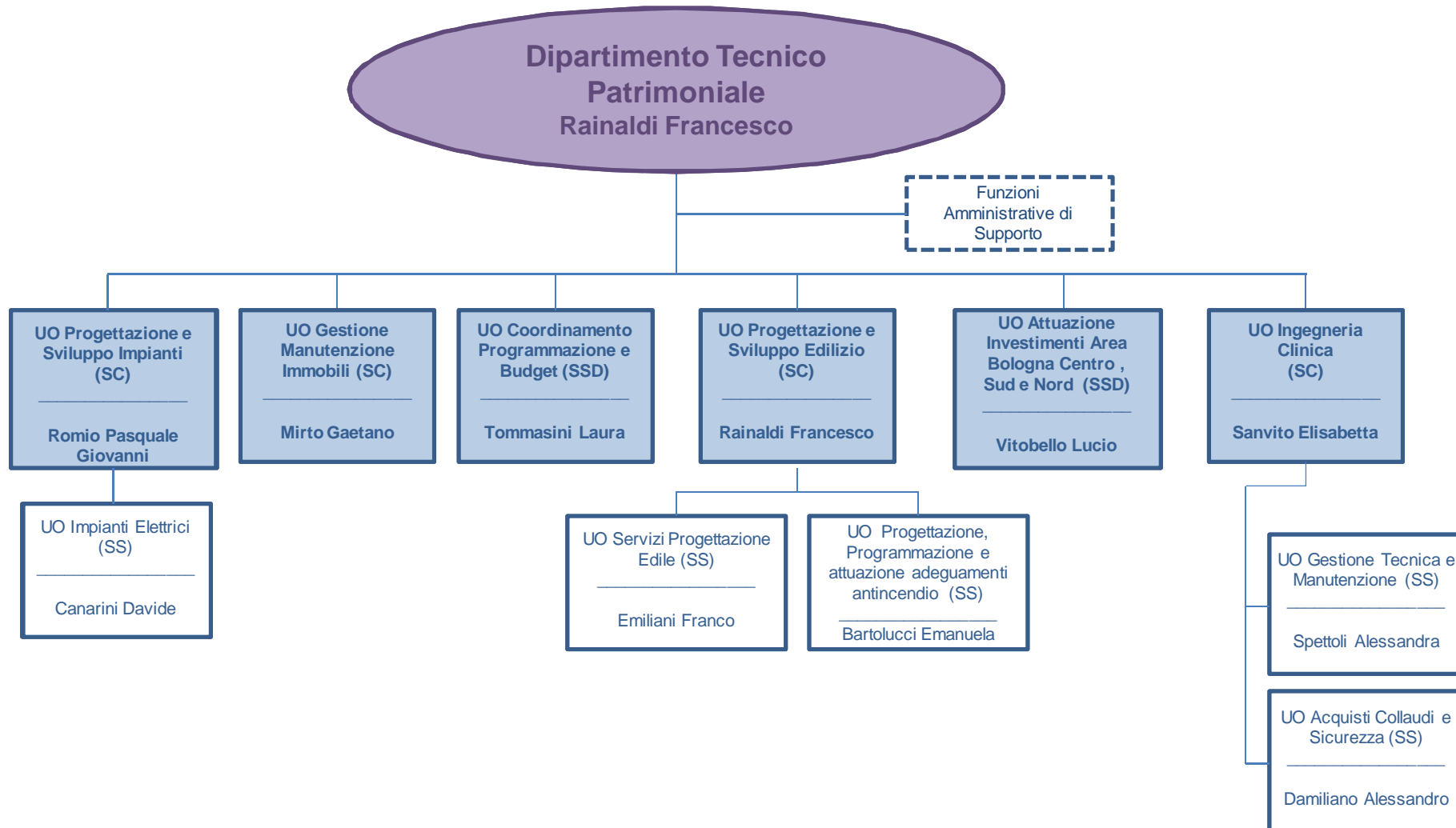


DAAT - Dipartimento Attività Amministrative Territoriali





Dipartimento Tecnico Patrimoniale





Dipartimento Farmaceutico

