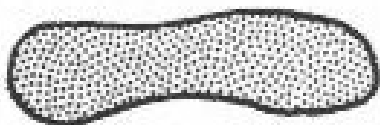
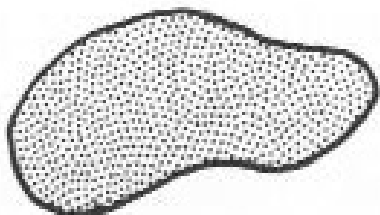
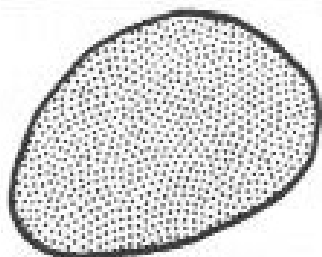
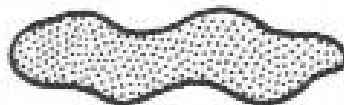
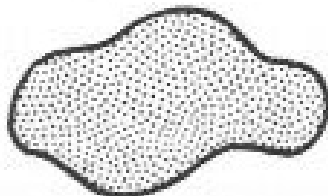
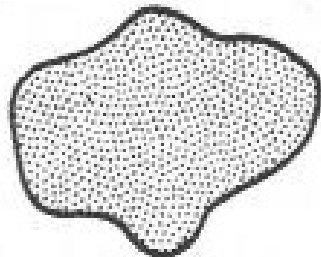


CATEGORIE STRATIGRAFICHE	DENOMINAZIONE DELLE PRINCIPALI UNITÀ STRATIGRAFICHE	
A. LITOSTRATIGRAFICHE	Gruppo Formazione Membro Strato(i)	
B. BIOSTRATIGRAFICHE	Biozone: Cenozona o zona di associazione Zona di distribuzione (totale, locale, concomitante, parziale)	
C. CRONOSTRATIGRAFICHE	Eonetema Eratema Sistema Serie Piano Cronozona	Unità geocronologiche equivalenti Eone Era Periodo Epoca Età Crono
D. ALTRE CATEGORIE STRATIGRAFICHE (mineralogiche, ambientali, sismiche, magnetiche ecc.)	Zona (con l'appropriato prefisso: sismozona ecc.)	

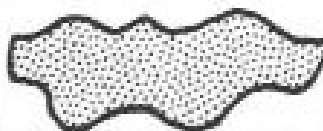
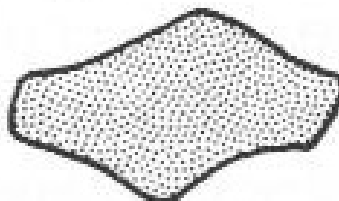
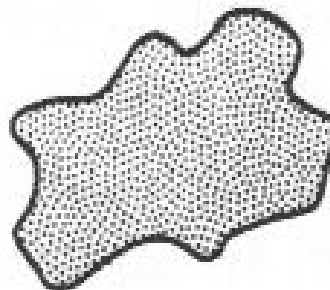
rounded



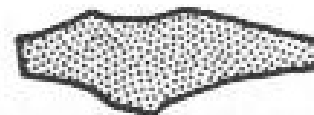
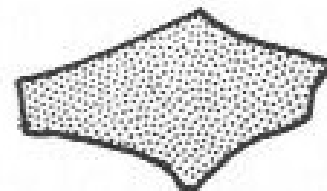
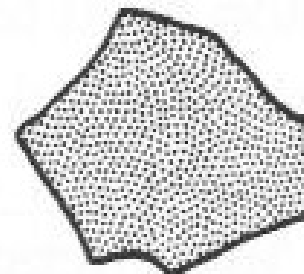
subrounded



subangular



angular



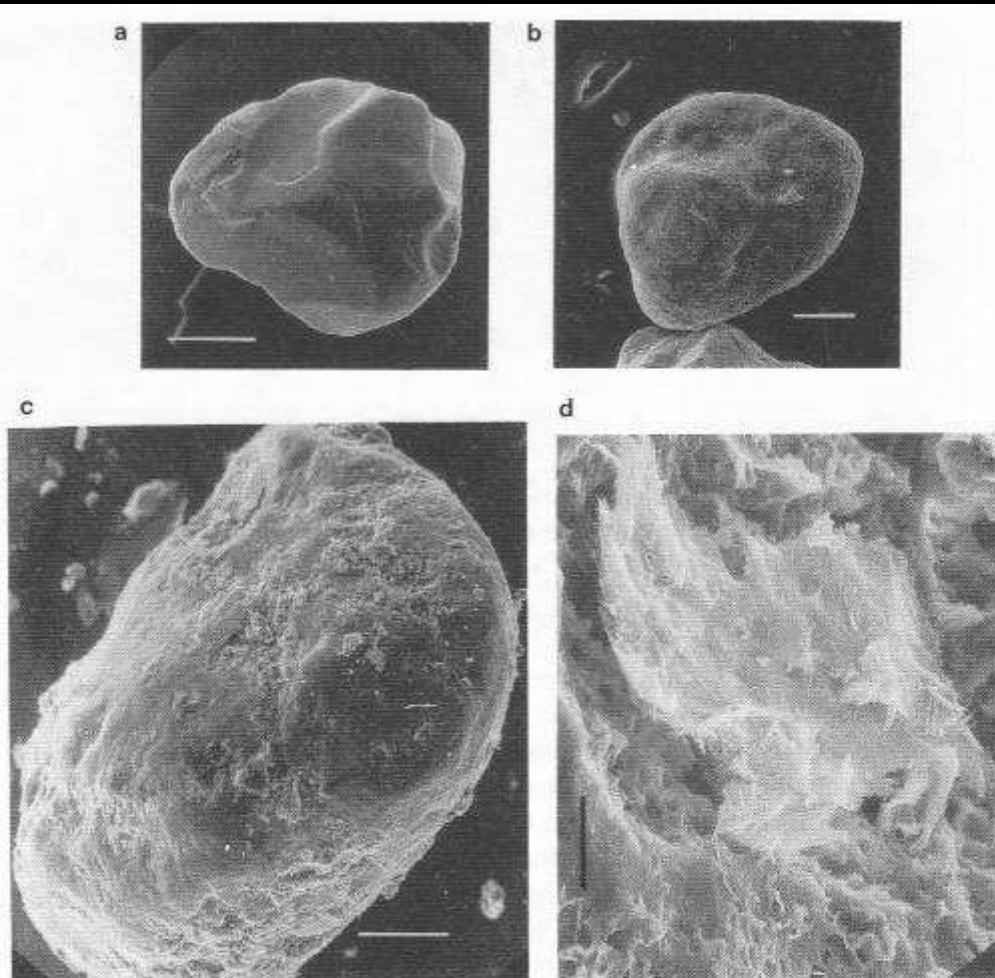
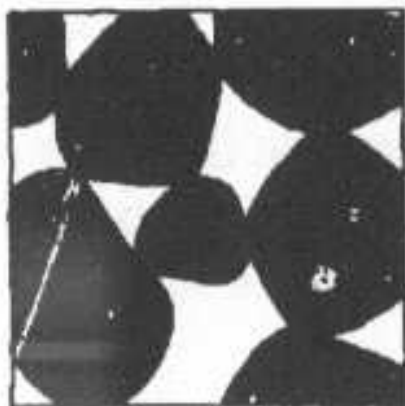


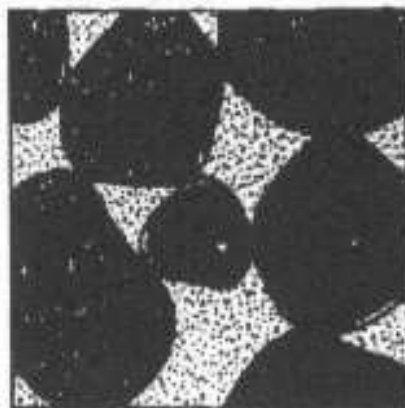
Figure 6.3 Aeolian quartz grains viewed with the SEM (Holocene sand dunes, 'edges' of the Thar Desert, north west India):

- (a) Rounded polished grain with traces of impact shown by crescentic marks. (Bar = 50 μm)
- (b) Rounded grain exhibiting etched surface caused by silica dissolution. (Bar = 50 μm)
- (c) Grain with rounded and irregular surface. (Bar = 100 μm)
- (d) Detail of (c) showing pitted surface and coating of fibrous clay identified as attapulgite-type clay minerals. (Bar = 100 μm)

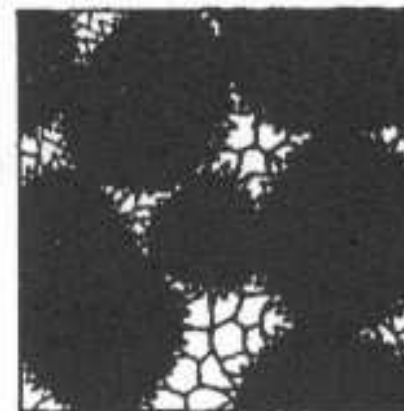
granuli e pori



granuli e matrice



granuli e cemento

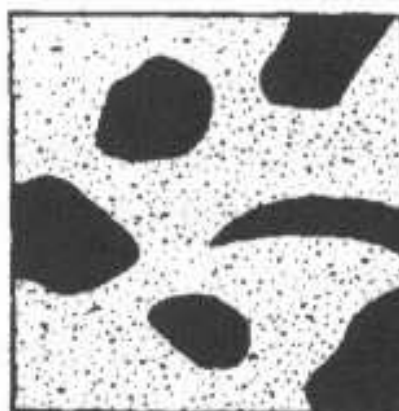


TESSITURA

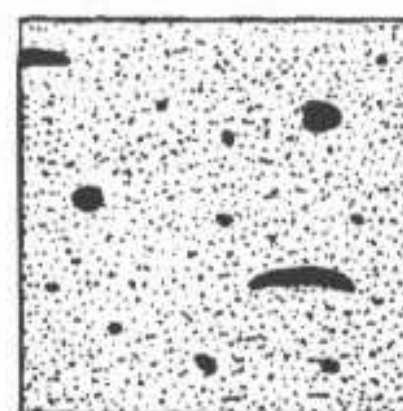
grano-sostenuta

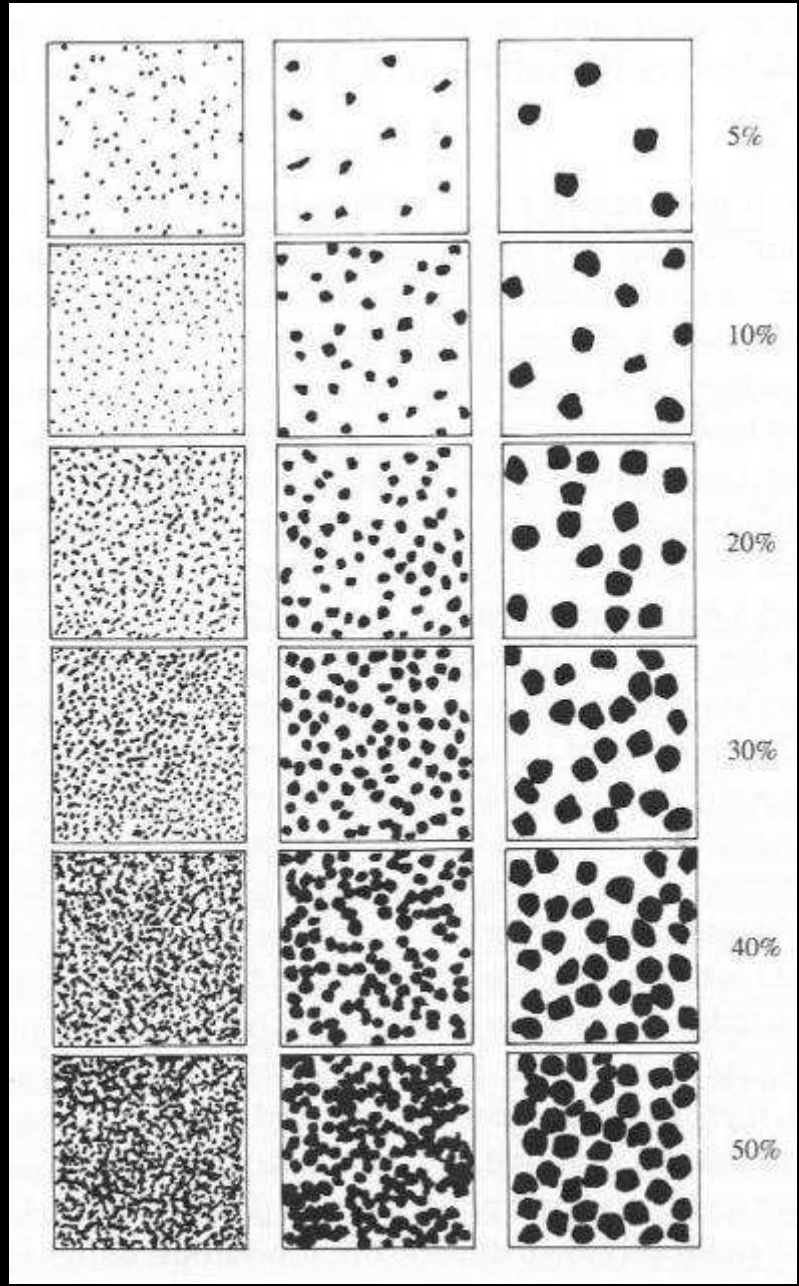


fango-sostenuta



pelitica





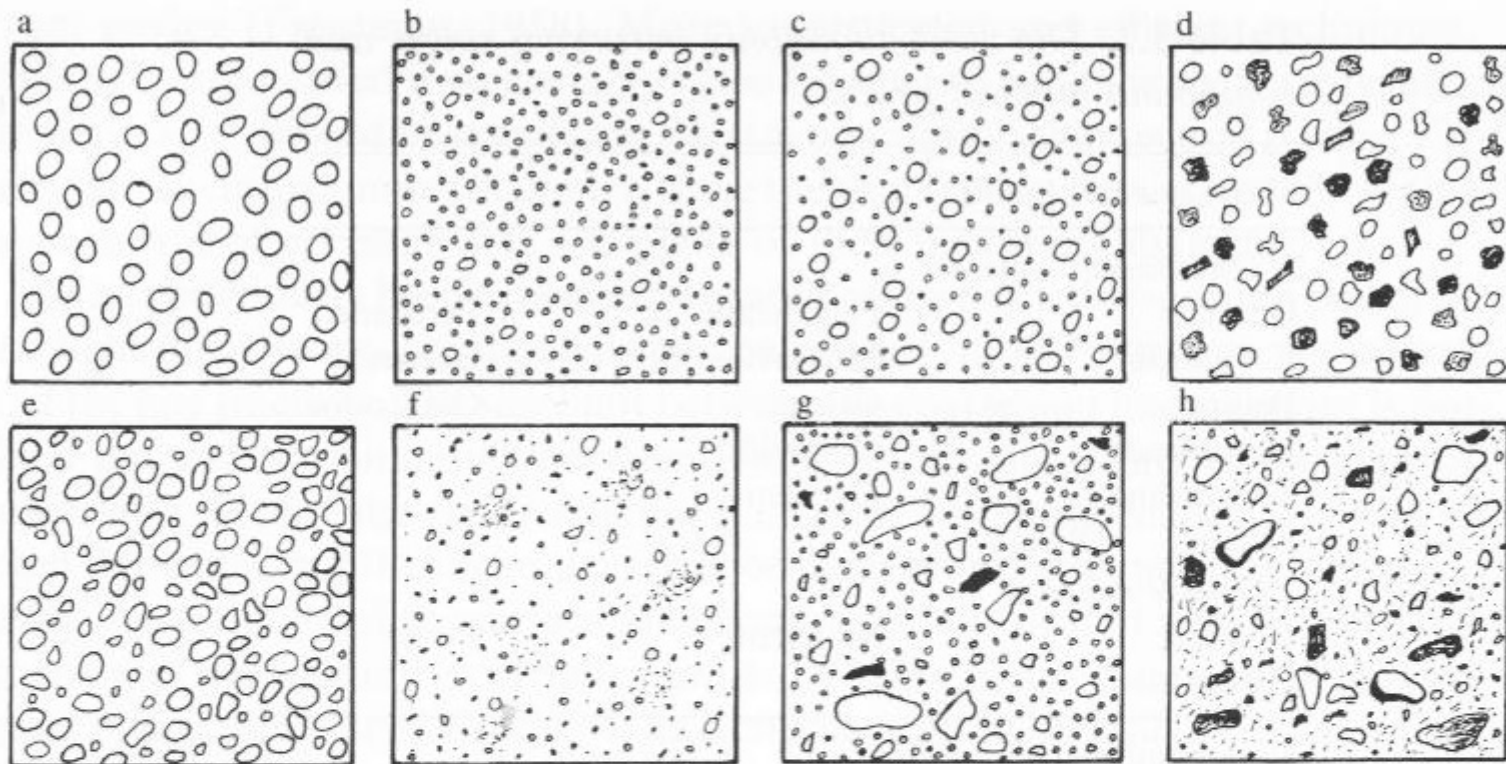
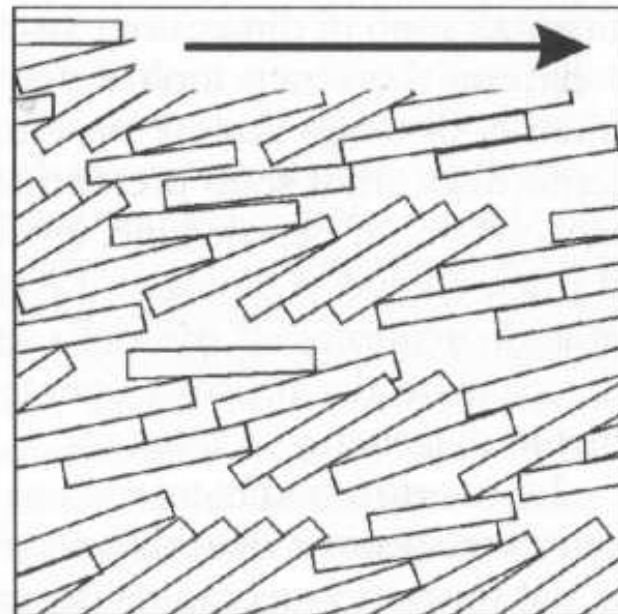
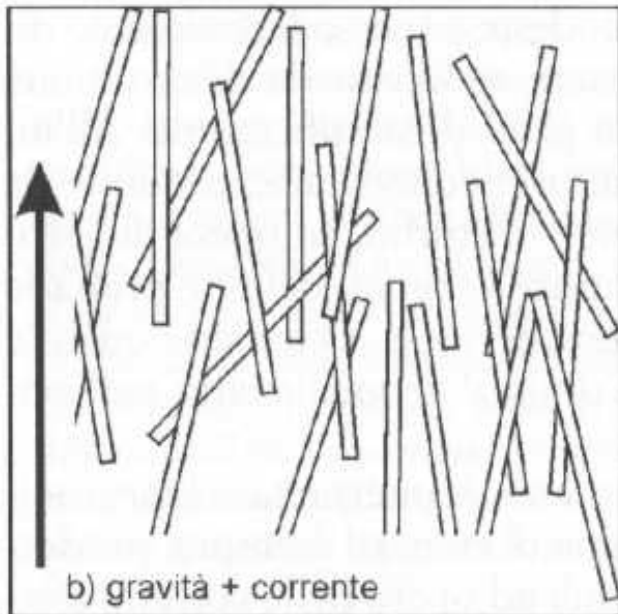
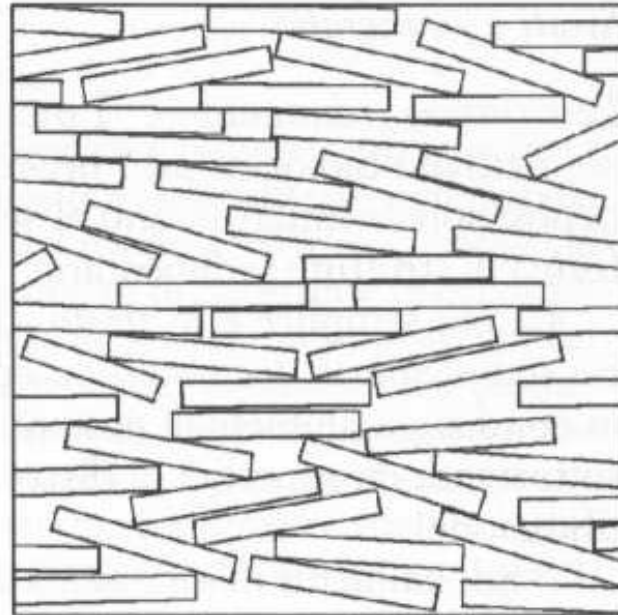
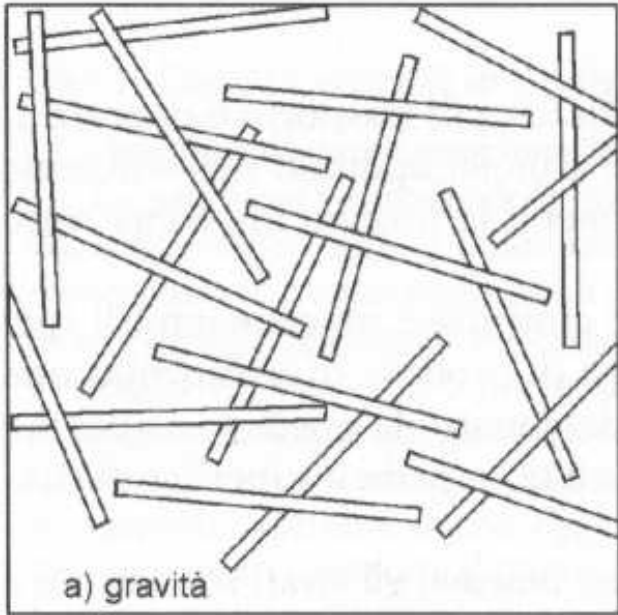
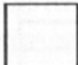


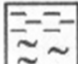




Figure 5.2 Charts used to estimate the degree of sorting of sediments viewed through the microscope:



- (a) Perfectly sorted coarse monomineralic sand
- (b) Well-sorted silt
- (c) Bimodal: well-sorted sand in well-sorted silt
- (d) Well-sorted sand of different compositions
- (e) Moderately sorted sand
- (f) Poorly sorted silt
- (g) Bimodal: poorly-sorted sand in well-sorted silt
- (h) Unsorted



LITOLOGIA SEDIMENTI TERRIGENI

 Argilla/argillite	 Siltite	 Ghiaia e conglomerati a supporto clastico
 Argilla fogliata marna	 Sabbia e arenite	 Ghiaia e conglomerati a supporto di matrice


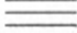






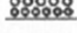



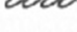



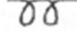

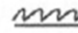
SEDIMENTI CARBONATICI

	Calcare
	Dolomia

ALTRI

	Selce		Gesso
	Torba		Sedimenti vulcanoclastici

STRUTTURE SEDIMENTARIE

	Docce di erosione		Lamine parallele		Lamine curve		Stromatoliti
	Solchi di erosione		Stratificazione obliqua		Gradazione normale		Bioturbazione debole
	Impronte di carico		Stratificazione flaser		Gradazione inversa		Intensa
	Fessure da disseccamento		Stratificazione lenticolare		Embricazione		Noduli
	Ripples simmetrici		Strie, lineazioni		Stratificazione convoluta		Slump
	Ripples asimmetrici						

TRACCE ORGANICHE

	Fossili indifferenziati		Radici
	Alghe		Tane di vermi
	Frammenti vegetali		

Limiti fra strati

	Netti, planari
	Netti, irregolari
	Graduali

Paleocorrenti

	Azimut
	Direzione

Parallele

Non parallele

PIANE



piane e
parallele



piane discontinue
e parallele

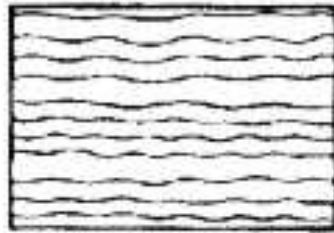


piane e non
parallele

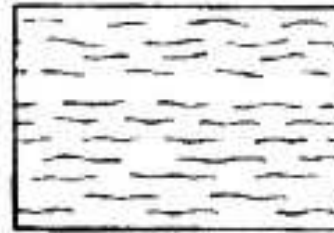


piane discontinue
e non parallele

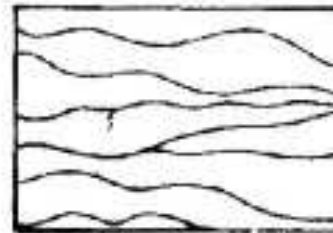
ONDULATE



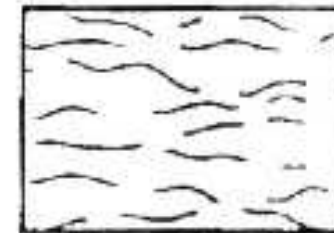
ondulate e
parallele



ondulate, discontinue
e parallele



ondulate e
non parallele



ondulate, discontinue
e non parallele

CURVE



curve e
parallele



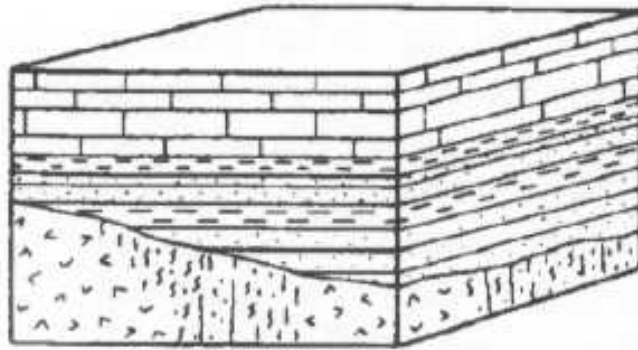
curve, discontinue
e parallele



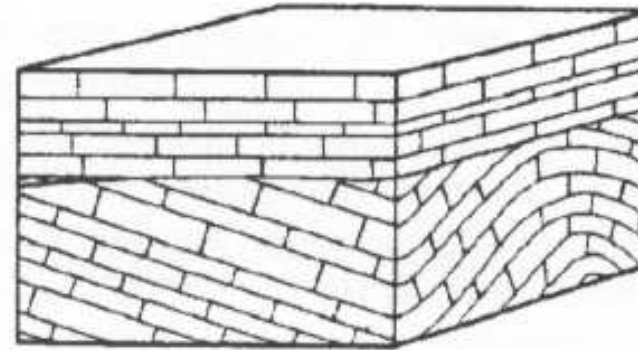
curve e non
parallele



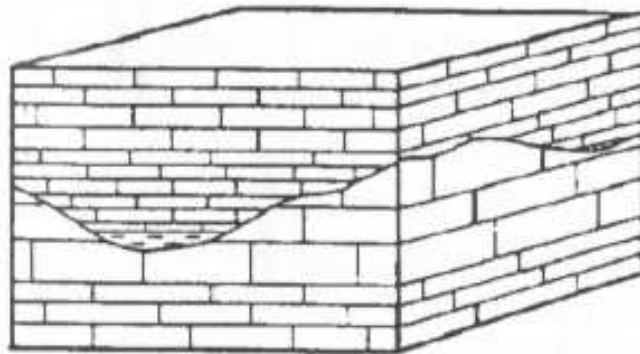
curve, discontinue
e non parallele



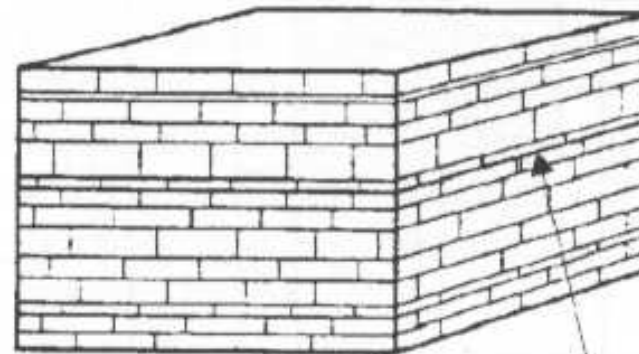
A) Non conformità



B) Discordanza angolare



C) Discordanza semplice



D) Paracordanza

Lacuna sedimentaria



Argilliti



Areniti



Calcari



Rocce metamorfiche



Basamento cristallino



Discontinuità stratigrafica